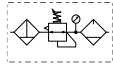


Popular Combinations: Inlet pressure 10 bar (145 psig), Secondary pressure 6.3 bar (91.3 psig), 1 bar (14.5 psig) pressure drop.



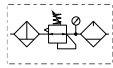
**Filter + Regulator + Lubricator Combinations, Poly bowl
5 micron element, 8 bar (116 psig) regulator + gauge and wall mounting brackets**



| Port size | Flow | Manual drain | Weight | Auto drain | Weight |
|-----------|----------------------------------|------------------------|--------------------|------------------------|--------------------|
| 1/2" | 43 dm ³ /s 90 (scfm) | P33CB14GEMNGLNW | 1.84 kg (4.06 lbs) | P33CB14GEANGLNW | 1.84 kg (4.06 lbs) |
| 3/4" | 52 dm ³ /s 110 (scfm) | P33CB16GEMNGLNW | 1.84 kg (4.06 lbs) | P33CB16GEANGLNW | 1.84 kg (4.06 lbs) |



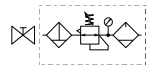
**Filter/Regulator + Lubricator Combinations, Poly bowl
5 micron element, 8 bar (116 psig) regulator + gauge and wall mounting brackets**



| Port size | Flow | Manual drain | Weight | Auto drain | Weight |
|-----------|----------------------------------|------------------------|--------------------|------------------------|--------------------|
| 1/2" | 52 dm ³ /s 110 (scfm) | P33CA14GEMNGLNW | 1.51 kg (3.33 lbs) | P33CA14GEANGLNW | 1.51 kg (3.33 lbs) |
| 3/4" | 71 dm ³ /s 150 (scfm) | P33CA16GEMNGLNW | 1.51 kg (3.33 lbs) | P33CA16GEANGLNW | 1.51 kg (3.33 lbs) |



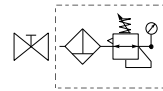
**Ball Valve + Filter/Regulator + Lubricator Combinations, Poly bowl
5 micron element, 8 bar (116 psig) regulator + gauge and wall mounting brackets**



| Port size | Flow | Manual drain | Weight | Auto drain | Weight |
|-----------|----------------------------------|------------------------|--------------------|------------------------|--------------------|
| 1/2" | 52 dm ³ /s 110 (scfm) | P33QA14GEMNGLNW | 1.51 kg (3.33 lbs) | P33QA14GEANGLNW | 1.51 kg (3.33 lbs) |
| 3/4" | 71 dm ³ /s 150 (scfm) | P33QA16GEMNGLNW | 1.51 kg (3.33 lbs) | P33QA16GEANGLNW | 1.51 kg (3.33 lbs) |



**Ball Valve + Filter/Regulator Combinations + Poly bowl
5 micron element, 8 bar Regulator + Gauge and Wall Mounting Brackets**



| Port size | Flow | Manual drain | Weight | Auto drain | Weight |
|-----------|----------------------------------|----------------------|-------------------|----------------------|-------------------|
| 1/2" | 52 dm ³ /s 110 (scfm) | P33QN14GEMNGW | 1.7 kg (3.75 lbs) | P33QN14GEANGW | 1.7 kg (3.75 lbs) |
| 3/4" | 71 dm ³ /s 150 (scfm) | P33QN16GEMNGW | 1.7 kg (3.75 lbs) | P33QN16GEANGW | 1.7 kg (3.75 lbs) |

| | | | | | | | | | | |
|---|--|--------------------------------------|--|------------------|----------|-----------------------|----------|-------------------------------------|------------|--------------------------------------|
| P 3 3 | | | | | E | | N | | L N | W |
| Combination | | Thread type | | Port size | | Drain type | | Adjustment range | | Add only for options with Lubricator |
| Combination C | | BSPP 1 | | 1/2 4 | | Auto drain A | | With round gauge | | |
| Shut off + Combination ¹ Q | | NPT 9 | | 3/4 6 | | Manual drain M | | 0-2 bar; 0-30 psi; 0.2 MPa Z | | |
| | | | | | | | | 4 bar; 60 psi; 0.4 MPa M | | |
| | | | | | | | | 8 bar; 125 psi; 0.8 MPa G | | |
| Combination type | | Bowl type | | | | | | | | |
| F/R+L A | | Poly bowl with bowl guard G | | | | | | | | |
| F+R+L B | | Metal bowl with sight glass S | | | | | | | | |
| F/R N | | | | | | | | | | |
| ¹ Option not available with F+R+L | | | | | | | | | | |
| Note: All bowl types are the same for each component Example: If a "G" is specified for a F+L, both units would get a poly bowl with bowl guard. | | | | | | | | | | |

Popular Combination Dimensions mm (inches)

P33C

