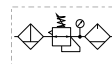


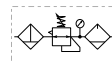
**Popular Combinations:** Inlet pressure 10 bar (145 psig), Secondary pressure 6.3 bar (91.3 psig), 1 bar (14.5 psig) pressure drop.

**Filter + Regulator + Lubricator Combinations, Poly bowl  
5 micron element, 8 bar (116 psig) regulator + gauge and wall mounting brackets**



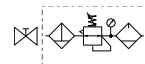
Port size	Flow	Manual drain	Weight	Auto drain	Weight
1/4"	20 dm <sup>3</sup> /s 42 (scfm)	<b>P32CB12GEMNGLNW</b>	1.29 kg (2.84 lbs)	<b>P32CB12GEANGLNW</b>	1.29 kg (2.84 lbs)
3/8"	32 dm <sup>3</sup> /s 68 (scfm)	<b>P32CB13GEMNGLNW</b>	1.29 kg (2.84 lbs)	<b>P32CB13GEANGLNW</b>	1.29 kg (2.84 lbs)
1/2"	40 dm <sup>3</sup> /s 85 (scfm)	<b>P32CB14GEMNGLNW</b>	1.29 kg (2.84 lbs)	<b>P32CB14GEANGLNW</b>	1.29 kg (2.84 lbs)

**Filter/Regulator + Lubricator Combinations, Poly bowl  
5 micron element, 8 bar (116 psig) regulator + gauge and wall mounting brackets**



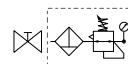
Port size	Flow	Manual drain	Weight	Auto drain	Weight
1/4"	22 dm <sup>3</sup> /s 45 (scfm)	<b>P32CA12GEMNGLNW</b>	1.03 kg (2.27 lbs)	<b>P32CA12GEANGLNW</b>	1.03 kg (2.27 lbs)
3/8"	33 dm <sup>3</sup> /s 70 (scfm)	<b>P32CA13GEMNGLNW</b>	1.03 kg (2.27 lbs)	<b>P32CA13GEANGLNW</b>	1.03 kg (2.27 lbs)
1/2"	43 dm <sup>3</sup> /s 90 (scfm)	<b>P32CA14GEMNGLNW</b>	1.03 kg (2.27 lbs)	<b>P32CA14GEANGLNW</b>	1.03 kg (2.27 lbs)

**Ball Valve + Filter/Regulator + Lubricator Combinations, Poly bowl  
5 micron element, 8 bar (116 psig) regulator + gauge and wall mounting brackets**



Port size	Flow	Manual drain	Weight	Auto drain	Weight
3/8"	33 dm <sup>3</sup> /s 70 (scfm)	<b>P32QA13GEMNGLNW</b>	1.03 kg (2.27 lbs)	<b>P32QA13GEANGLNW</b>	1.03 kg (2.27 lbs)
1/2"	43 dm <sup>3</sup> /s 90 (scfm)	<b>P32QA14GEMNGLNW</b>	1.03 kg (2.27 lbs)	<b>P32QA14GEANGLNW</b>	1.03 kg (2.27 lbs)

**Ball Valve + Filter/Regulator Combinations + Poly bowl  
5 micron element, 8 bar Regulator + Gauge and Wall Mounting Brackets**



Port size	Flow	Manual drain	Weight	Auto drain	Weight
3/8"	33 dm <sup>3</sup> /s 70 (scfm)	<b>P32QN13GEMNGW</b>	1.1 kg (2.42 lbs)	<b>P32QN13GEANGW</b>	1.1 kg (2.42 lbs)
1/2"	43 dm <sup>3</sup> /s 90 (scfm)	<b>P32QN14GEMNGW</b>	1.1 kg (2.42 lbs)	<b>P32QN14GEANGW</b>	1.1 kg (2.42 lbs)

<b>P 3 2</b>					<b>E</b>		<b>N</b>		<b>L N</b>	<b>W</b>
<b>Combination</b>		<b>Thread type</b>		<b>Port size</b>		<b>Drain type</b>		<b>Adjustment range</b>		Add only for options with Lubricator
Combination <b>C</b>		BSPP <b>1</b>		1/4 <b>2</b>		Auto drain <b>A</b>		<b>With round gauge</b>		
Shut off + Combination <sup>1</sup> <b>Q</b>		NPT <b>9</b>		3/8 <b>3</b>		Manual drain <b>M</b>		0-2 bar; 0-30 psi; 0.2 MPa <b>Z</b>		
				1/2 <b>4</b>				4 bar; 60 psi; 0.4 MPa <b>M</b>		
								8 bar; 125 psi; 0.8 MPa <b>G</b>		
								<b>Without gauge</b>		
								2 bar <b>Y</b>		
								4 bar <b>L</b>		
								8 bar <b>N</b>		
								17 bar <b>H</b>		
<b>Combination type</b>		<b>Bowl type</b>								
F/R+L <b>A</b>		Poly bowl with bowl guard <b>G</b>								
F+R+L <b>B</b>		Metal bowl with sight glass <b>S</b>								
F/R <b>N</b>										

<sup>1</sup> Option not available with F+R+L and 1/4" port size (2)

**Note:** All bowl types are the same for each component

**Example:** If a "G" is specified for a F+L, both units would get a poly bowl with bowl guard.

Popular Combination Dimensions mm (inches)

P32C

