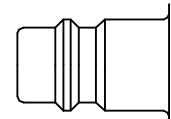




Safety coupling with a self-venting system for Euro plug profile. Self-venting takes place during disconnection – no risk of pressurised hoses being tossed around. When the Push-Button is pressed for the first time, air is relieved from the coupling but the plug in the coupling remains locked. The plug is only disconnected when the Push-Button is pressed for the second time. System fulfils the requirements of ISO4414 – increased safety standards in the work place. DIN EN 983. Coupling body is 360° rotating so Push-Button is visible in any position.



Euro Profile



**Working Pressure\*:**  
up to 12 bar

**Material:**

- Coupling: Anodised Aluminium, Nickel plated brass
- Plug: Zinc plated steel
- Seals: NBR

**Working Temperature:**

-20°C up to +100°C (NBR)

**Flow Rate Air:**

1.225 l/min.

inlet pressure 6 bar, pressure drop 0.5 bar

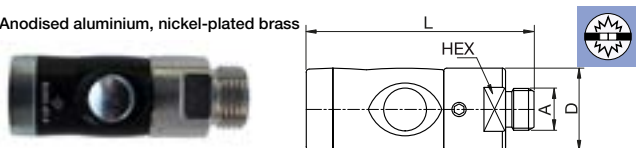
\* maximum static working pressure with design factor 4 to 1.



## Self-Venting System

### 26KPAW Coupler with valve, Male Thread

Anodised aluminium, nickel-plated brass



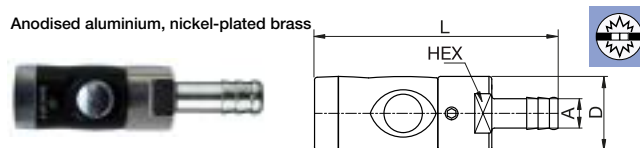
A		HEX	L	D
G1/4	<b>26KPAW13APX</b>	22	71.9	26
G3/8	<b>26KPAW17APX</b>	22	71.9	26
G1/2	<b>26KPAW21APX</b>	22	74.9	26



## Self-Venting System

### 26KPTF Coupler with valve, Hose Barb

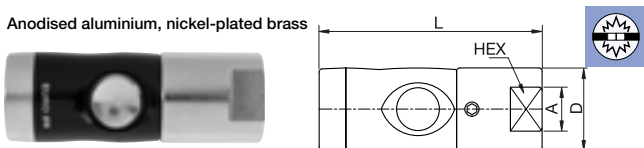
Anodised aluminium, nickel-plated brass



A		HEX	L	D
6	<b>26KPTF06APX</b>	22	85.7	26
8	<b>26KPTF08APX</b>	22	85.7	26
10	<b>26KPTF10APX</b>	22	85.7	26
13	<b>26KPTF13APX</b>	22	85.7	26

### 26KPIW Coupler with valve, Female Thread

Anodised aluminium, nickel-plated brass



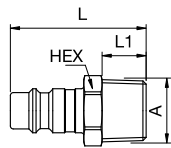
A		HEX	L	D
G1/4	<b>26KPIW13APX</b>	22	70.4	26
G3/8	<b>26KPIW17APX</b>	22	72.4	26
G1/2	<b>26KPIW21APX</b>	22	74.4	26



## Self-Venting System

### 25SFAK Plug without valve, Male Thread

Zinc-plated steel



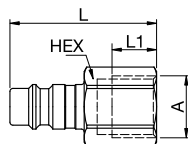
A

HEX L L1

R1/4	<b>25SFAK13SXZ</b>		14	37	12
R3/8	<b>25SFAK17SXZ</b>		17	37	12
R1/2	<b>25SFAK21SXZ</b>		22	43	17

### 25SFIW Plug without valve, Female Thread

Zinc-plated steel



A

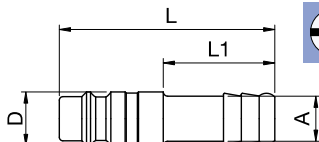


HEX L L1

G1/4	<b>25SFIW13SXZ</b>	<b>9086 25 13</b>	17	38.5	12
G3/8	<b>25SFIW17SXZ</b>	<b>9086 25 17</b>	19	39.5	12
G1/2	<b>25SFIW21SXZ</b>	<b>9086 25 21</b>	24	44	14

### 25SFTF Plug without valve, Hose Barb

Zinc-plated steel



A



L L1 D

6	<b>25SFTF06SXZ</b>	<b>9085 25 06</b>	48	25	12
8	<b>25SFTF08SXZ</b>	<b>9085 25 08</b>	48	25	12
10	<b>25SFTF10SXZ</b>	<b>9085 25 10</b>	48	25	12
13	<b>25SFTF13SXZ</b>	<b>9085 25 13</b>	48	25	15