

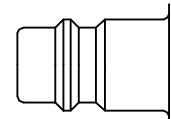


Safety coupling with a self-venting system. Self-venting takes place during disconnection – no risk of pressurised hoses being tossed around. When the sleeve is pulled back, the plug is released yet remains locked in. The coupling valve closes and the air is vented from the air line at the same time. Only then, by operating the sleeve again, can uncoupling take place safely. The system fulfils the requirements of ISO 4414 – increased safety standards in the work place. DIN EN 983. Ultra High Flow valve for optimum flow and low pressure drop.

- Available on request:
 - with additional end connections

Safety Note

Reliable functioning can only be guaranteed in conjunction with original Parker Rectus plugs made of steel.



Euro Profile



KE Self-Venting System

Working Pressure*:
up to 12 bar

Material:

- Coupling: Nickel plated brass / steel
- Plug: Zinc plated steel
- Seals: NBR

Working Temperature:

-20°C up to +100°C (NBR)

Flow Rate Air:

2.020 l/min.

inlet pressure 6 bar, pressure drop 0.5 bar

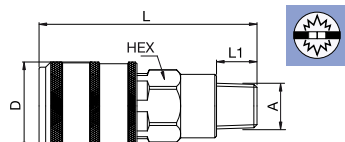
* maximum static working pressure with design factor 4 to 1.



Self-Venting System

1600KEAK Coupler with valve, Male Thread

Nickel-plated brass/steel, NBR



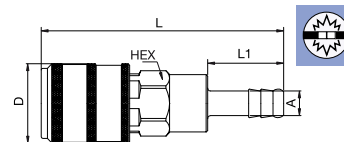
A		HEX	L	L1	D
R1/4	1600KEAK13SPN	19	64.5	12	26
R3/8	1600KEAK17SPN	19	64.5	12	26
R1/2	1600KEAK21SPN	22	59	17	26



Self-Venting System

1600KETF Coupler with valve, Hose Barb

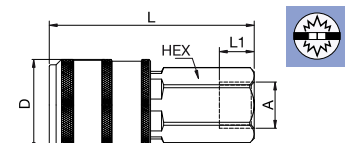
Nickel-plated brass/steel, NBR



A		HEX	L	L1	D
6	1600KETF06SPN	19	79.5	25	26
8	1600KETF08SPN	19	79.5	25	26
9	1600KETF09SPN	19	79.5	25	26
10	1600KETF10SPN	19	79.5	25	26
13	1600KETF13SPN	19	79.5	25	26

1600KEIW Coupler with valve, Female Thread

Nickel-plated brass/steel, NBR



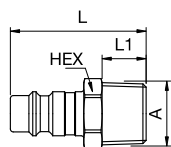
A		HEX	L	L1	D
G1/4	1600KEIW13SPN	19	59	10	26
G3/8	1600KEIW17SPN	19	59	9	26
G1/2	1600KEIW21SPN	24	61.5	12	26



Self-Venting System

25SFAK Plug without valve, Male Thread

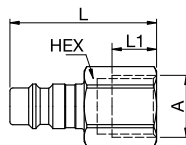
Zinc-plated steel



A		HEX	L	L1
R1/8	25SFAK10SXZ	13	33	9
R1/4	25SFAK13SXZ	14	37	12
R3/8	25SFAK17SXZ	17	37	12
R1/2	25SFAK21SXZ	22	43	17

25SFIW Plug without valve, Female Thread

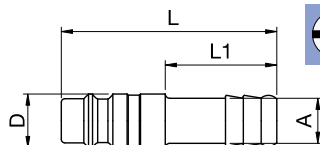
Zinc-plated steel



A			HEX	L	L1
G1/8	25SFIW10SXZ	9086 25 10	14	30	5
G1/4	25SFIW13SXZ	9086 25 13	17	38.5	12
G3/8	25SFIW17SXZ	9086 25 17	19	39.5	12
G1/2	25SFIW21SXZ	9086 25 21	24	44	14

25SFTF Plug without valve, Hose Barb

Zinc-plated steel



A			L	L1	D
6	25SFTF06SXZ	9085 25 06	48	25	12
8	25SFTF08SXZ	9085 25 08	48	25	12
9	25SFTF09SXZ	9085 25 09	48	25	12
10	25SFTF10SXZ	9085 25 10	48	25	12
13	25SFTF13SXZ	9085 25 13	48	25	15