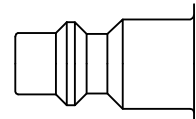




Safety coupling 1/4" with a self-venting system according to ISO 6150 B. Self-venting takes place during disconnection – no risk of pressurised hoses being tossed around. When the sleeve is pulled back, the plug is released yet remains locked in. The coupling valve closes and the air is vented from the air line at the same time. Only then, by operating the sleeve again, can uncoupling take place safely. The system fulfils the requirements of ISO 4414 – increased safety standards in the work place. DIN EN 983. Ultra High Flow valve for optimum flow and low pressure drop.



ISO B Profile

- Available on request:
 - with additional end connections

Safety Note

Reliable functioning can only be guaranteed in conjunction with original Parker Rectus plugs made of steel.



KE Self-Venting System

Working Pressure*:

up to 12 bar

Material:

- Coupling: Nickel plated brass / steel
- Plug: Nickel plated steel
- Seals: NBR

Working Temperature:

-20°C up to +100°C (NBR)

Flow Rate Air:

950 l/min.

inlet pressure 6 bar, pressure drop 0.5 bar

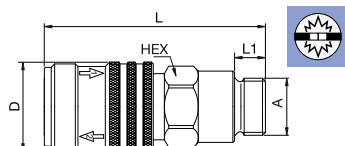
* maximum static working pressure with design factor 4 to 1.



Self-Venting System

1400KEAW Coupler with valve, Male Thread

Nickel-plated brass/steel, NBR



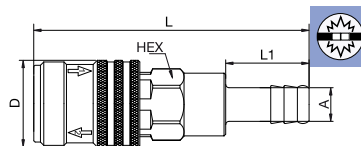
A		HEX	L	L1	D
G1/4	1400KEAW13SPN	19	64.5	9	26
G3/8	1400KEAW17SPN	21	64.5	9	26
G1/2	1400KEAW21SPN	24	67.5	12	26



Self-Venting System

1400KETF Coupler with valve, Hose Barb

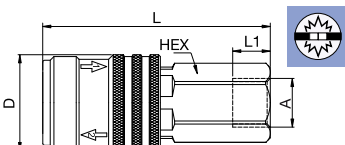
Nickel-plated brass/steel, NBR



A		HEX	L	L1	D
6	1400KETF06SPN	19	82.5	25	26
8	1400KETF08SPN	19	82.5	25	26
10	1400KETF10SPN	19	82.5	25	26
13	1400KETF13SPN	19	82.5	25	26

1400KEIW Coupler with valve, Female Thread

Nickel-plated brass/steel, NBR



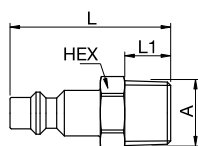
A		HEX	L	L1	D
G1/4	1400KEIW13SPN	19	61.5	9	26
G3/8	1400KEIW17SPN	19	61.5	9	26
G1/2	1400KEIW21SPN	24	64.5	12	26



Self-Venting System

23SFAK Plug without valve, Male Thread

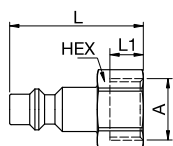
Nickel-plated steel



A		HEX	L	L1
R1/8	23SFAK10SXN	13	39	9
R1/4	23SFAK13SXN	14	42	12
R3/8	23SFAK17SXN	17	42	12
R1/2	23SFAK21SXN	22	48	17

23SFIW Plug without valve, Female Thread

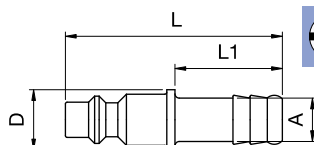
Nickel-plated steel



A			HEX	L	L1
G1/8	23SFIW10SXN	9086 23 10	14	36	9
G1/4	23SFIW13SXN	9086 23 13	17	36	9
G3/8	23SFIW17SXN	9086 23 17	19	36	9
G1/2	23SFIW21SXN	9086 23 21	24	39	12

23SFTF Plug without valve, Hose Barb

Nickel-plated steel



A			L	L1	D
6	23SFTF06SXN	9085 23 06	51	25	14
8	23SFTF08SXN	9085 23 08	51	25	14
9	23SFTF09SXN		51	25	14
10	23SFTF10SXN	9085 23 10	51	25	14
13	23SFTF13SXN		51	25	14