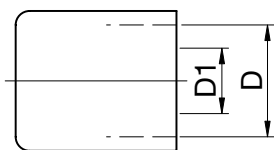


## QH Ferrules

Stainless Steel



**D D1**

QH1510	15	11.5
QH1610	17	11.5
QH1810	18.5	13.7
QH1913	19	14.2
QH2013	20.5	14.5
QH2213	21.7	15
QH2313	23.5	17.5
QH2919	28.5	22

## PM Crimper

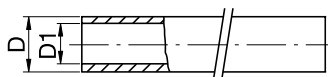


**D**

PM10-36	10 - 36
---------	---------

## MHE EPDM-Hoses

EPDM



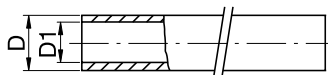
**Max. Working Length in m Reference Ferrule D D1 Color**

MHE1050B	50	1610	16.5	9.5	BLUE
MHE1050R	50	1610	16.5	9.5	RED
MHE1050S	50	1610	16.5	9.5	BLACK
MHE1350B	50	2313	21.5	12.7	BLUE
MHE1350R	50	2313	21.5	12.7	RED
MHE1350S	50	2313	21.5	12.7	BLACK
MHE1930B	30	2919	27	19	BLUE
MHE1930R	30	2919	27	19	RED
MHE1930S	30	2919	27	19	BLACK

Compatible fluid : Water, up to 20 bar, up to +140°C

## MHN NBR-Hoses

NBR



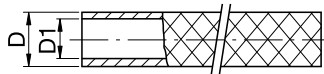
**Max. Working Length in m Reference Ferrule D D1 Color**

MHN1050S	50	1610	15.9	9.5	BLACK
MHN1350S	50	2213	19.8	12.7	BLACK

Compatible fluid : oil, up to 28 bar, up to +135°C

## MHP PVC-Hoses

PVC

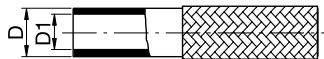


	Max. Working Length in m	Reference Ferrule	D	D1	Color
<b>MHP1030T</b>	30	1610	16	10	TRANSPARENT
<b>MHP1030B</b>	30	1610	16	10	BLUE
<b>MHP1030R</b>	30	1610	16	10	RED
<b>MHP1330T</b>	30	1913	19	13	TRANSPARENT
<b>MHP1330B</b>	30	1913	19	13	BLUE
<b>MHP1330R</b>	30	1913	19	13	RED
<b>MHP1930T</b>	50	2919	27	19	TRANSPARENT

Compatible fluid : Water, up to 15 bar, up to +60°C

## MHS Silicone-Hoses

Silicone



	Max. Working Length in m	Reference Ferrule	D	D1	Color
<b>MHS1025</b>	25	1510	14	9.5	SILVER
<b>MHS1025B</b>	25	1510	14	9.5	BLUE
<b>MHS1025R</b>	25	1510	14	9.5	RED
<b>MHS1325</b>	25	1913	17.5	13	SILVER
<b>MHS1325B</b>	25	1913	17.5	13	BLUE
<b>MHS1325R</b>	25	1913	17.5	13	RED

Compatible fluid : Water, up to 25 bar, up to +170°C

## MHF FKM-Hoses

FKM



	Max. Working Length in m	Reference Ferrule	D	D1	Color
<b>MHF1025</b>	25	1510	23	16	SILVER
<b>MHF1325</b>	25	1913	26	19	SILVER

Compatible fluid : Oil /Water, up to 15 bar, up to +130°C