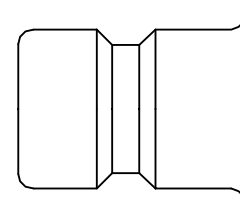




German industrial profile for compressed air applications. High Flow valve for optimum flow and low pressure drop. Robust structure, optimised with respect to size and performance. The collar design minimises damage to the valve body.

- Available on request:
 - with additional end connections
 - other seals for different temperature ranges and fluids



German Profile

KA Single Shut-Off

Working Pressure*:
up to 35 bar

Material:

- Coupling: Nickel plated brass
- Plug: Nickel plated steel
- Seals: NBR

Working Temperature:
-20°C up to +100°C (NBR)

Flow Rate Air:
6.500 l/min.
inlet pressure 6 bar, pressure drop 0.5 bar

Flow Rate Water:
65 l/min.
pressure drop 0.5 bar

KB Double Shut-Off

Working Pressure*:
up to 35 bar

Material:

- Coupling: Nickel plated brass
- Plug: Nickel plated brass
- Seals: NBR

Working Temperature:
-20°C up to +100°C (NBR)

Flow Rate Air:
4.300 l/min.
inlet pressure 6 bar, pressure drop 0.5 bar

Flow Rate Water:
52 l/min.
pressure drop 0.5 bar

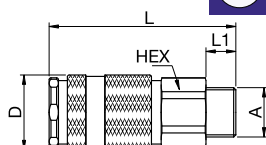
* maximum static working pressure with design factor 4 to 1.

Single Shut-Off / Double Shut-off

Single Shut-Off

57KBAW Coupler with valve, Male Thread

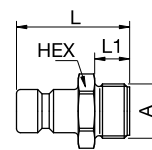
Nickel-plated brass, NBR



A	HEX	L	L1	D
G1/2 57KBAW21BPN	34	98	12	40
G3/4 57KBAW26BPN	34	100	16	40

57SFAW Plug without valve, Male Thread

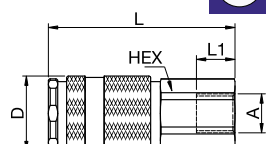
Nickel-plated steel



A	HEX	L	L1
G1/2 57SFAW21SXN	27	52	15

57KBIW Coupler with valve, Female Thread

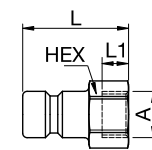
Nickel-plated brass, NBR



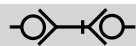
A	HEX	L	L1	D
G1/2 57KBIW21BPN	34	100	19	40
G3/4 57KBIW26BPN	34	100	16	40

57SFIW Plug without valve, Female Thread

Nickel-plated steel



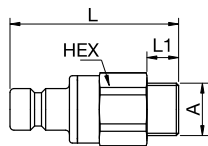
A	HEX	L	L1
G1/2 57SFIW21SXN	27	48	15



Double Shut-off

57SBAW Plug with valve, Male Thread

Nickel-plated brass, NBR



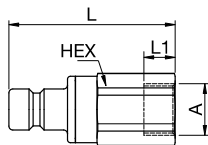
A 

HEX L L1

G1/2	57SBAW21MPN	34	83	12
G3/4	57SBAW26MPN	34	85	16

57SBIW Plug with valve, Female Thread

Nickel-plated brass, NBR



A 

HEX L L1

G1/2	57SBIW21MPN	34	85	19
G3/4	57SBIW26MPN	34	85	16