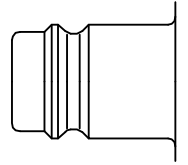




Brass coupling with no valve for applications with liquids in the pressure range up to 35 bar. The couplings are corrosion resistant. The system stands out for a high flow with minimal pressure drop.

- Available on request:
 - with additional end connections
 - other seals for different temperature ranges and fluids



various Profile



KF Straight-Through

Working Pressure*:
up to 35 bar

Material:

- Coupling: Nickel plated brass
- Plug: Nickel plated steel
- Seals: NBR

Working Temperature:
-20°C up to +100°C (NBR)

Flow Rate Water:
58 l/min.
pressure drop 0.5 bar

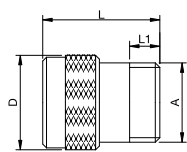
* maximum static working pressure with design factor 4 to 1.



Straight-Through

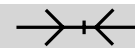
41KFAW Coupler without valve, Male Thread

Nickel-plated brass, NBR



A	L	L1	D
G1/2	31	8	25

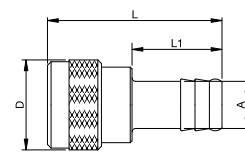
41KFAW21MPN



Straight-Through

41KFTF Coupler without valve, Hose Barb

Nickel-plated brass, NBR

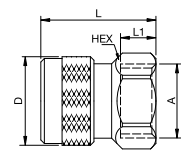


A	L	L1	D
13	48.5	25	25
19	48.5	25	25

41KFTF13MPN
41KFTF19MPN

41KFIW Coupler without valve, Female Thread

Nickel-plated brass, NBR

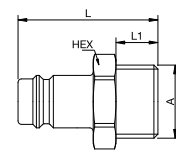


A	HEX	L	L1	D
G1/2	24	32.5	10	25

41KFIW21MPN

41SFAW Plug without valve, Male Thread

Nickel-plated brass



A	HEX	L	L1
G1/2	24	40	12

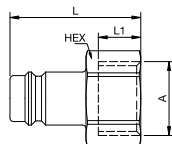
41SFAW21MXN



Straight-Through

41SFIW Plug without valve, Female Thread

Nickel-plated brass



A



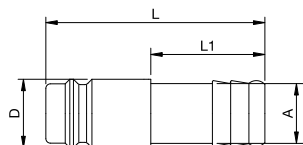
HEX L L1

G1/2 41SFIW21MXN

24 37 12

41SFTF Plug without valve, Hose Barb

Nickel-plated brass



A



L L1 D

13 41SFTF13MXN

48 25 15

19 41SFTF19MXN

49 25 21