



Smallest mini industrial coupling for air and gas applications. Primarily in medicine, didactics and model building. Partly suitable for liquids due to size. Coupling system with single-hand operation. Extremely small dimensions.

- Available on request:
  - in brass material without nickel plating
  - with additional end connections
  - other seals for different temperature ranges and fluids



**Working Pressure\*:**  
up to 35 bar

**Material:**

- Coupling: Nickel plated brass
- Plug: Nickel plated brass
- Seals: NBR

**Working Temperature:**

-20°C up to +100°C (NBR)

**Flow Rate Air:**

50 l/min.

inlet pressure 6 bar, pressure drop 0.5 bar

**Flow Rate Water:**

0.6 l/min.

pressure drop 0.5 bar

\* maximum static working pressure with design factor 4 to 1.



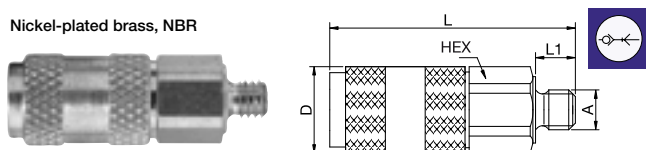
Single Shut-Off



Single Shut-Off

## 02KAAM Coupler with valve, Male Thread

Nickel-plated brass, NBR



A

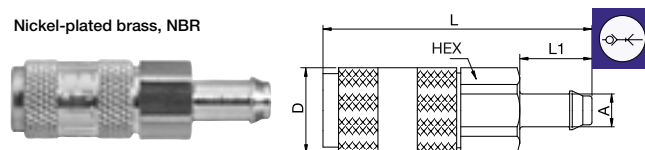


HEX L L1 D

M3	02KAAM03MPN	6	19	3	6.5
----	-------------	---	----	---	-----

## 02KATF Coupler with valve, Hose Barb

Nickel-plated brass, NBR



A

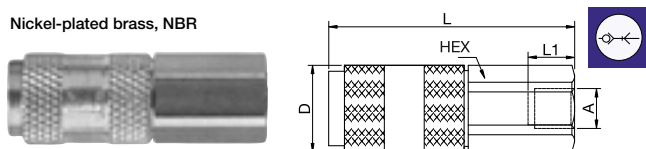


HEX L L1 D

2	02KATF02MPN	6	21	5.5	6.5
3	02KATF03MPN	6	22	5.5	6.5

## 02KAIM Coupler with valve, Female Thread

Nickel-plated brass, NBR



A

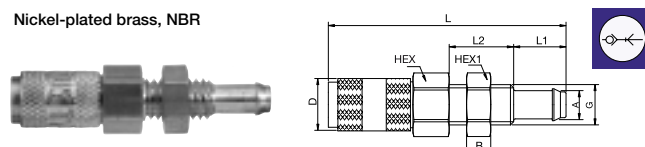


HEX L L1 D

M3	02KAIM03MPN	6	19	3	6.5
----	-------------	---	----	---	-----

## 02KATS Coupler with valve, Panel Mount with Hose Barb

Nickel-plated brass, NBR

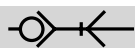


A



HEX HEX1 B G L L1 L2 D

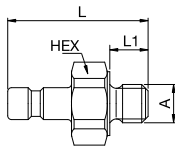
2	02KATS02MPN	7	7	3	M5	29	5.5	8	6.5
---	-------------	---	---	---	----	----	-----	---	-----



Single Shut-Off

02SFAM Plug without valve, Male Thread

Nickel-plated brass



A



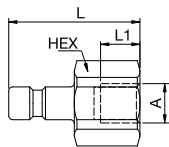
HEX L L1

M3 02SFAM03MXN

6 11 3

02SFIM Plug without valve, Female Thread

Nickel-plated brass



A



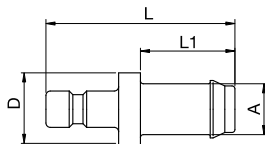
HEX L L1

M3 02SFIM03MXN

6 10 3

02SFTF Plug without valve, Hose Barb

Nickel-plated brass



A



L L1 D

2 02SFTF02MXN

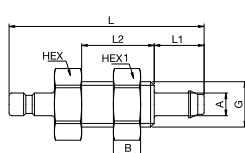
12 5.5 4

3 02SFTF03MXN

13 6.5 5

02SFTS Plug without valve, Panel Mount with Hose Barb

Nickel-plated brass



A



HEX HEX1 B G L L1 L2

2 02SFTS02MXN

7 7 3 M5 22 5.5 8