

Characteristics according to VDI 3293 Pressures quoted as gauge pressure

Characteristics	Symbol	Unit	Description	
General Features				
Type			Poppet valve	
Mounting			2 through-bolts M5	
Tube connection			Thread	
Port size			G1/8	G1/4
Weight (mass)		kg	0.05	0.08
Installation			In any position	
Ambient temperature range	ϑ_{\min} ϑ_{\max}	°C °C	-20 +80	Note: When using below freezing point (°C) it is necessary to consult us
Medium temperature range	ϑ_{\min} ϑ_{\max}	°C °C	0 +80	
Medium			Filtered compressed air	
Lubrication			With or without oil mist lubrication	
Pneumatic Characteristics				
Nominal pressure	p_n	bar	6	
Operating pressure range	p_{\min} p_{\max}	bar bar	0.5 10	
Nominal flow	Q_N	l/min	385	635

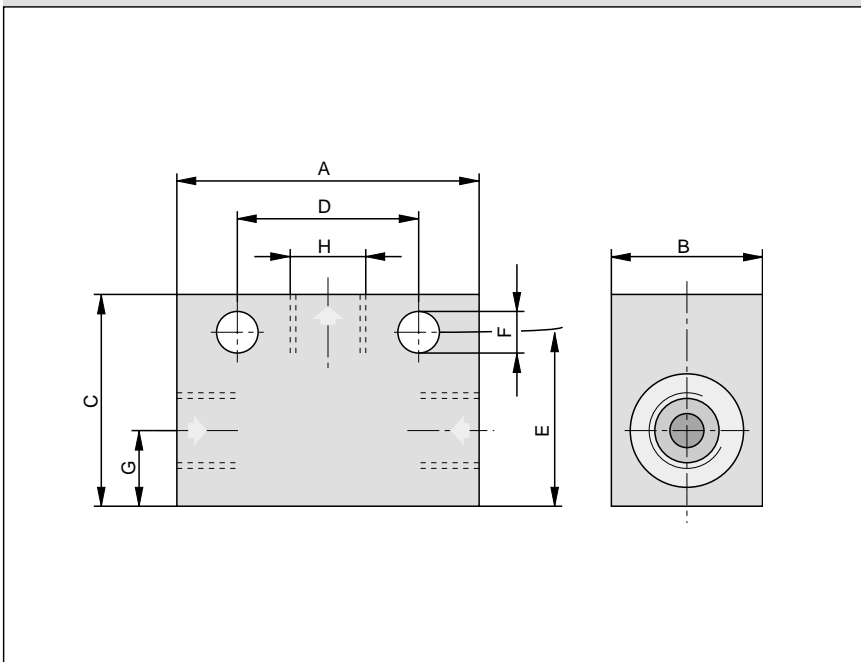
Shuttle Valve

G1/8, G1/4

Series OR 8



Dimensions (mm)



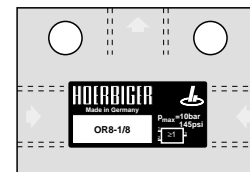
Dimension Table (mm)

Type	A	B	C	D	E	F	G	H
OR 8-1/8	40	20	28	24	23	5.5	10	G1/8
OR 8-1/4	45	20	35	24	27	5.5	10	G1/4

Order Instructions: OR 8-1/8 PA 10206
OR 8-1/4 PA 12516

For product group list see 4.01.001E

Data Sheet No. 4.20.001E



A1P136E00JX00X

The right to introduce technical modifications is reserved