

A1P374E00DX00X

The right to introduce technical modifications is reserved

Characteristics to VDI 3290			Pressures quoted as gauge pressure	
Characteristics	Symbol	Unit	Description	
General Features				
Type			Spool valve	
Mounting			2 screws M5	
Tube connection			Thread	
Port size			G1/8; 7.4 deep	
Weight (mass)		kg	0.195	
Installation			In any position	
Ambient temperature range	ϑ_{\min} ϑ_{\max}	°C °C	-10 +60	Note: When using below freezing point (°C) it is necessary to consult us.
Medium temperature range	ϑ_{\min} ϑ_{\max}	°C °C	-10 +70	
Medium			Filtered compressed air	
Lubrication			With or without oil mist lubrication ¹⁾	
Pneumatic Characteristics				
Nominal pressure	p_n	bar	6	
Operating pressure range	p_{\min} p_{\max}	bar bar	0 10	
Nominal flow	Q_N	l/min	500	
Actuation				
Manual control			Direct	
Stroke		mm	4.5	
Actuating force	F_b	N	G, E, B: RFG, RFE, RFB:	7 10

¹⁾ We recommend the use of mineral oil type VG32 to ISO 3448

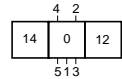
5/3 Way Valve

G1/8

Actuation: Hand lever

Series S9

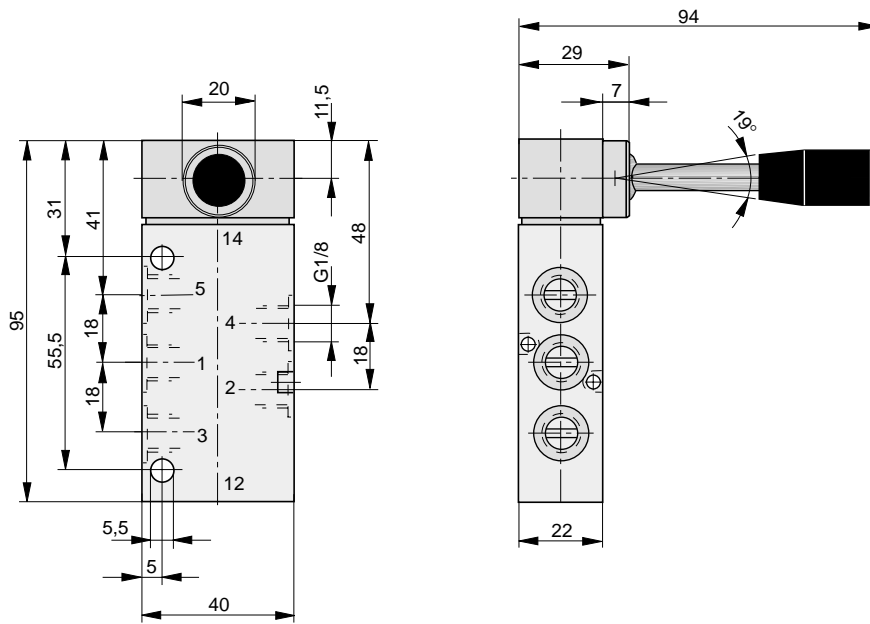
S9 511...-1/8



For product group list see 3.42.001E

Data Sheet No. 3.42.100E-1

Dimensions (mm)



Order Instructions

Actuation	Middle position function	Symbol	Type	Order Instructions Order No.
Hand lever indexed in 3 positions	Middle position closed		S9511G-1/8	PA 10321
	Middle position exhausted		S9511E-1/8	PA 10322
	Middle position pressurized		S9511B-1/8	PA 10323
Hand lever, spring return to middle position	Middle position closed		S9511RFG-1/8	PA 10324
	Middle position exhausted		S9511RFE-1/8	PA 10325
	Middle position pressurized		S9511RFB-1/8	PA 10326

Characteristics to VDI 3290		Pressures quoted as gauge pressure	
Characteristics	Symbol	Unit	Description
General Features			
Type			Spool valve
Mounting			2 screws M5
Tube connection			Thread
Port size			G1/8; 7.4 deep
Weight (mass)		kg	0.195
Installation			In any position
Ambient temperature range	ϑ_{\min} ϑ_{\max}	°C °C	-10 +60
Medium temperature range	ϑ_{\min} ϑ_{\max}	°C °C	-10 +70
Medium			Filtered compressed air
Lubrication			With or without oil mist lubrication ¹⁾
Pneumatic Characteristics			
Nominal pressure	p_n	bar	6
Operating pressure range	p_{\min} p_{\max}	bar bar	0 10
Nominal flow	Q_N	l/min	500
Actuation			
Manual control			Direct
Stroke		mm	4.5
Actuating force	F_b	N	7

¹⁾ We recommend the use of mineral oil type VG 32 to ISO 3448

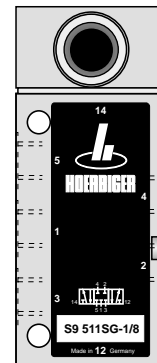
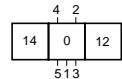
5/3 Way Valve

G1/8

Actuation:
Safety hand lever

Series S9

S9 511S.-1/8



HOERBIGER
ORIGA

For product group list see 3.42.001E

Data Sheet No. 3.42.101E-1

A1P393E00FX40X

The right to introduce technical modifications is reserved

Characteristics to VDI 3290				Pressures quoted as gauge pressure	
Characteristics	Symbol	Unit	Description		
General Features					
Type			Spool valve		
Mounting			2 screws M6		
Tube connection			Thread		
Port size			G 1/4; 11 deep		
Weight (mass)		kg	0.52 0.53 - RF-Type		
Installation			In any position		
Ambient temperature range	ϑ_{\min} ϑ_{\max}	°C °C	-10 +60	Note: When using below freezing	
Medium temperature range	ϑ_{\min} ϑ_{\max}	°C °C	-10 +70	point (°C) it is necessary to consult us.	
Medium			Filtered compressed air		
Lubrication			With or without oil mist lubrication ¹⁾		
Pneumatic Characteristics					
Nominal pressure	p_n	bar	6		
Operating pressure range	p_{\min} p_{\max}	bar bar	0 10		
Nominal flow	Q_N	l/min	1300 - Type G, RFG, B, RFB 1000 - Type E, RFE		
Actuation					
Manual control			Direct		
Stroke		mm	6.5		
Actuation Force					
Type	Actuation force (N)		Type	Actuation force (N)	
S9 511G-1/4	10		S9 511RFG-1/4	15	
S9 511E-1/4					
S9 511B-1/4					

¹⁾ We recommend the use of mineral oil type VG32 to ISO 3448

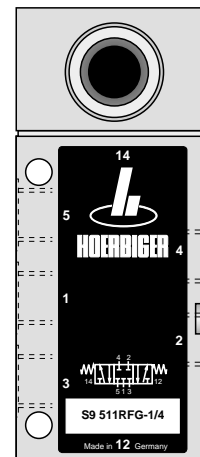
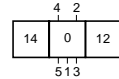
5/3 Way Valve

G1/4

Actuation: Hand lever

Series S9

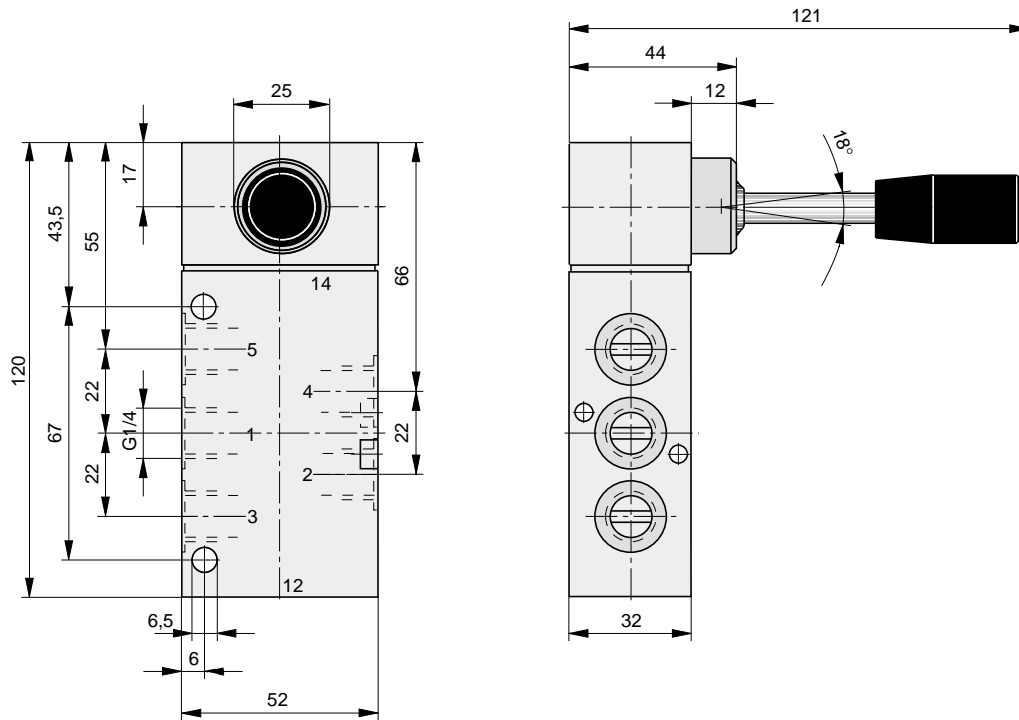
S9 511...-1/4



For product group list see 3.52.001E

Data Sheet No. 3.52.100E-1

Dimensions (mm)



Order Instructions

Actuation	Middle position function	Symbol	Type	Order Instructions Order No.
Hand lever indexed in 3 operating positions	Middle position closed		S9511G-1/4	PA 12687
	Middle position exhausted		S9511E-1/4	PA 12688
	Middle position pressurized		S9511B-1/4	PA 12689
Hand lever with spring return to middle position	Middle position closed		S9511RFG-1/4	PA 12690
	Middle position exhausted		S9511RFE-1/4	PA 12691
	Middle position pressurized		S9511RFB-174	PA 12692

Characteristics to VDI 3290		Pressures quoted as gauge pressure	
Characteristics	Symbol	Unit	Description
General Features			
Type			Spool valve
Mounting			2 screws M6
Tube connection			Thread
Port size			G1/4; 11 deep
Weight (mass)		kg	0.52
Installation			In any position
Ambient temperature range	ϑ_{\min} ϑ_{\max}	°C °C	-10 +60
Medium temperature range	ϑ_{\min} ϑ_{\max}	°C °C	-10 +70
Medium			Filtered compressed air
Lubrication			With or without oil mist lubrication ¹⁾
Pneumatic Characteristics			
Nominal pressure	p_n	bar	6
Operating pressure range	p_{\min} p_{\max}	bar bar	0 10
Nominal flow	Q_N	l/min	1300 - Type SG, SB 1000 - Type SE
Actuation			
Manual control			Direct
Stroke			6.5
Actuation force	F_b	N	10

¹⁾ We recommend the use of mineral oil type VG32 to ISO 3448

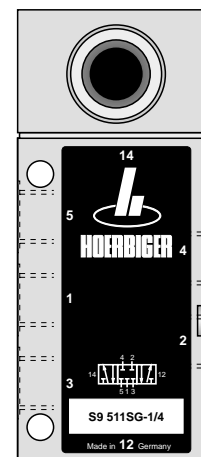
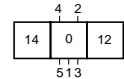
5/3 Way Valve

G1/4

Actuation:
Safety hand lever

Series S9

S9511S.-1/4

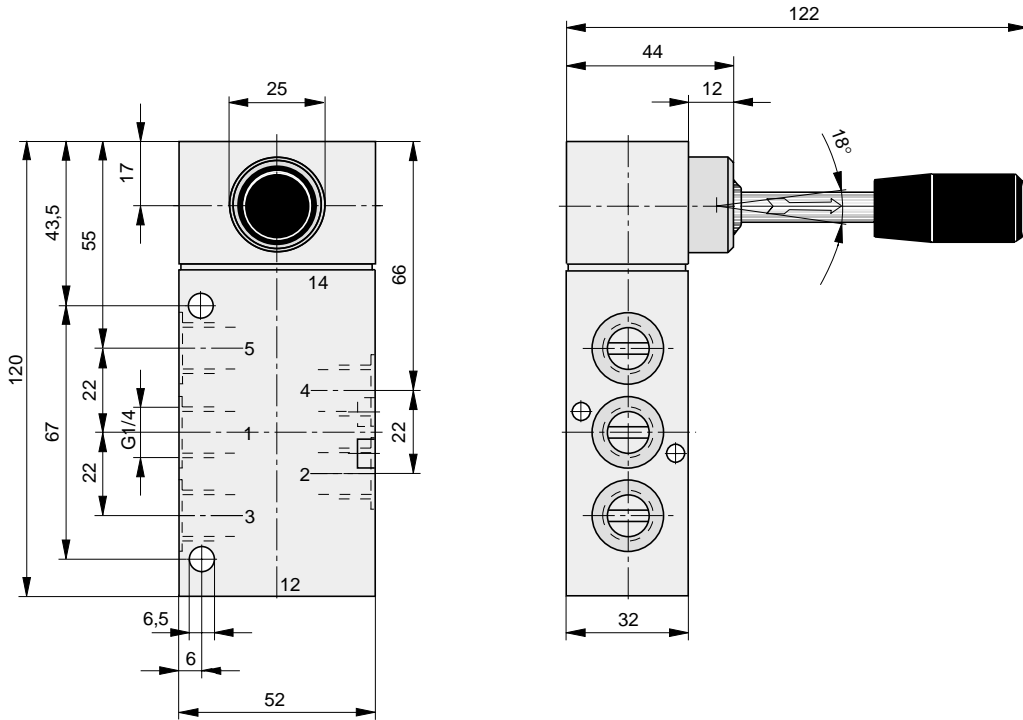


HOERBIGER
ORIGA

For product group list see 3.52.001E

Data Sheet No. 3.52.101E-1

Dimensions (mm)



Order Instructions

Actuation	Middle position function	Symbol	Type	Order Instructions Order No.
Hand lever secured in 3 operating positions	Middle position closed		S9511SG-1/4	PA 12693
	Middle position exhausted		S9511SE-1/4	PA 12694
	Middle position pressurized		S9511SB-1/4	PA 12695

A1P395E00FX40X

The right to introduce technical modifications is reserved

Characteristics to VDI 3290				Pressures quoted as gauge pressure	
Characteristics	Symbol	Unit	Description		
General Features					
Type			Spool valve		
Mounting			2 screws M6		
Tube connection			Thread		
Port size			G 1/4; 11 deep		
Weight (mass)		kg	0.52 0.53 - RF-Type		
Installation			In any position		
Ambient temperature range	ϑ_{\min} ϑ_{\max}	°C °C	-10 +60	Note: When using below freezing point (°C) it is necessary to consult us.	
Medium temperature range	ϑ_{\min} ϑ_{\max}	°C °C	-10 +70		
Medium			Filtered compressed air		
Lubrication			With or without oil mist lubrication ¹⁾		
Pneumatic Characteristics					
Nominal pressure	p_n	bar	6		
Operating pressure range	p_{\min} p_{\max}	bar bar	0 10		
Nominal flow	Q_N	l/min	1300 - Type G, RFG, B, RFB 1000 - Type E, RFE		
Actuation					
Manual control			Direct		
Stroke		mm	6.5		
Actuation Force					
Type	Actuation force (N)		Type	Actuation force (N)	
S9 512G-1/4	10		S9 512RFG-1/4	15	
S9 512E-1/4					
S9 512B-1/4			S9 512RFE-1/4		
			S9 512RFB-1/4		

¹⁾ We recommend the use of mineral oil type VG32 to ISO 3448

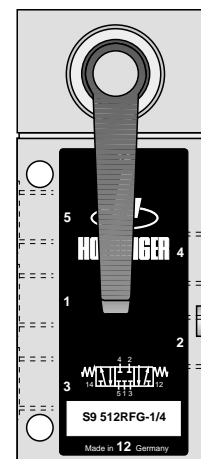
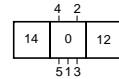
5/3 Way Valve

G1/4

Actuation: Rotary lever

Series S9

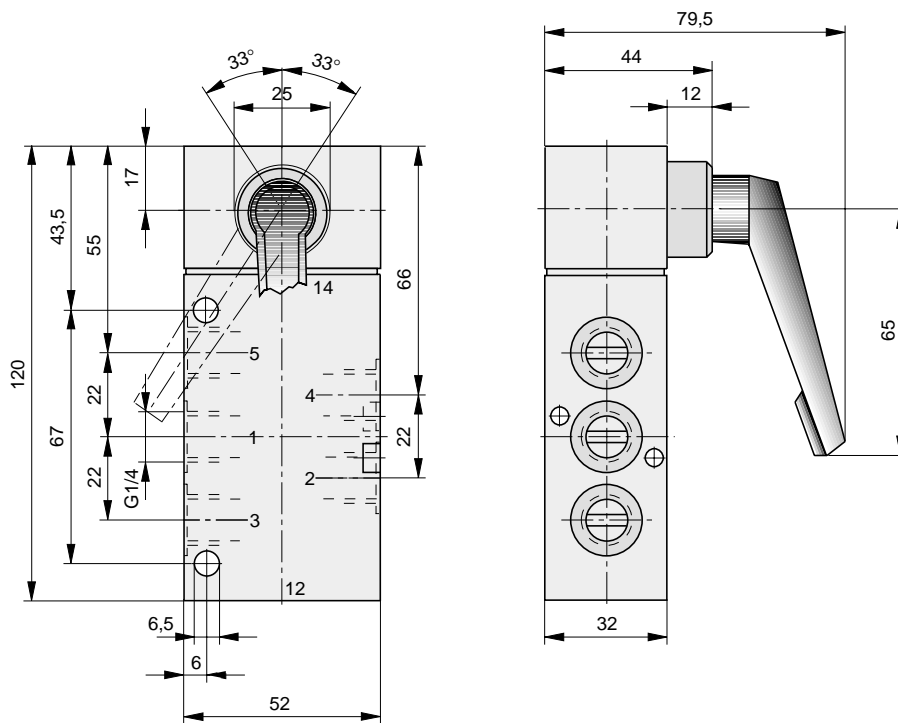
S9 512...-1/4



For product group list see 3.52.001E

Data Sheet No. 3.52.102E-1

Dimensions (mm)



Order Instructions

Actuation	Middle position function	Symbol	Type	Order Instructions Order No.
Rotary lever indexed in 3 operating positions	Middle position closed		S9512G-1/4	PA 12696
	Middle position exhausted		S9512E-1/4	PA 12697
	Middle position pressurized		S9512B-1/4	PA 12698
Rotary lever with spring return to middle position	Middle position closed		S9512RFG-1/4	PA 12699
	Middle position exhausted		S9512RFE-1/4	PA 12700
	Middle position pressurized		S9512RFB-1/4	PA 12701

A1P451E00JAA40X

The right to introduce technical modifications is reserved

Characteristics to VDI 3290				Pressure quoted as gauge pressure	
Characteristics	Symbol	Unit	Description		
General Features					
Type			Spool valve		
Mounting			2 screws M6		
Tube connection			Thread		
Port size			G 1/2; 16 deep		
Weight (mass)		kg	1.20		
Installation			In any position		
Ambient temperature range	ϑ_{\min} ϑ_{\max}	°C °C	-10 +60	Note: When using below freezing	
Medium temperature range	ϑ_{\min} ϑ_{\max}	°C °C	-10 +70	point (°C), it is necessary to consult us.	
Medium			Filtered compressed air		
Lubrication			With or without oil mist lubrication ¹⁾		
Pneumatic Characteristics					
Nominal pressure	p_n	bar	6		
Operating pressure range	p_{\min}	bar	0		
	p_{\max}	bar	10		
Nominal flow	Q_N	l/min	3500 - Version G, RFG, SG 3300 - Version E, RFE, SE 3600 - Version B, RFB, SB		
Actuation					
Manual control			Direct		
Stroke		mm	9.4		
Actuation Forces					
Type	Actuation Force (N)		Type	Actuation Force (N)	
S9 511G(S)-1/2	15		S9 511RFG-1/2	40	
S9 511E(S)-1/2					
S9 511B(S)-1/2					

¹⁾ We recommend mineral oil of the viscosity class VG32 to ISO 3448

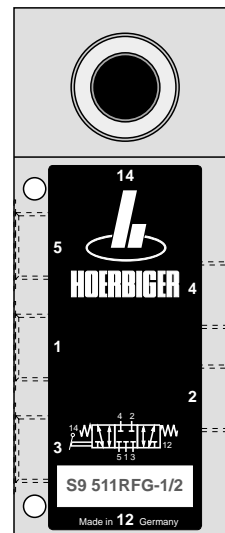
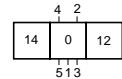
5/3 Way Valve

G1/2

Actuation:
Hand lever
Safety hand lever

Series S9

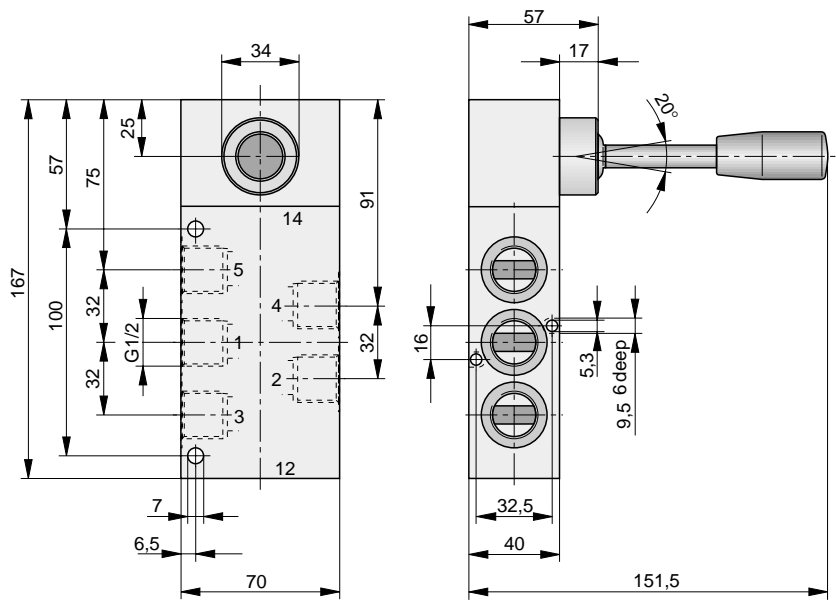
S9 511...-1/2
S9 511S.-1/2



For product group list see 3.53.001E

Data Sheet No. 3.53.100E-1

Dimensions (mm)



Order Instructions

Actuation	Middle position function	Symbol	Order Instructions	
			Type	Order No.
Hand lever indexed in 3 switching positions	Middle position closed		S9511G-1/2	PA 16369
	Middle position exhausted		S9511E-1/2	PA 16370
	Middle position pressurized		S9511B-1/2	PA 16371
Hand lever spring return to middle position	Middle position closed		S9511RFG-1/2	PA 16372
	Middle position exhausted		S9511RFE-1/2	PA 16373
	Middle position pressurized		S9511RFB-1/2	PA 16374
Hand lever secured in 3 switching positions	Middle position closed		S9511SG-1/2	PA 16375
	Middle position exhausted		S9511SE-1/2	PA 16376
	Middle position pressurized		S9511SB-1/2	PA 16377

A1P457E00JAA40X

The right to introduce technical modifications is reserved

Characteristics to VDI 3290				Pressure quoted as gauge pressure	
Characteristics	Symbol	Unit	Description		
General Features					
Type			Spool valve		
Mounting			2 screws M6		
Tube connection			Thread		
Port size			G 1/2; 16 deep		
Weight (mass)		kg	1.20		
Installation			In any position		
Ambient temperature range	ϑ_{\min} ϑ_{\max}	°C °C	-10 +60	Note: When using below freezing	
Medium temperature range	ϑ_{\min} ϑ_{\max}	°C °C	-10 +70	point (°C), it is necessary to consult us.	
Medium			Filtered compressed air		
Lubrication			With or without oil mist lubrication ¹⁾		
Pneumatic Characteristics					
Nominal pressure	p_n	bar	6		
Operating pressure range	p_{\min} p_{\max}	bar bar	0 10		
Nominal flow	Q_N	l/min	3500 - Version G, RFG 3300 - Version E, RFE 3600 - Version B, RFB		
Actuation					
Manual control			Direct		
Stroke		mm	9.4		
Actuation Forces					
Type	Actuation Force (N)		Type	Actuation Force (N)	
S9 512G-1/4	5		S9 512RFG-1/4	15	
S9 512E-1/4					
S9 512B-1/4					

¹⁾ We recommend mineral oil of the viscosity class VG32 to ISO 3448

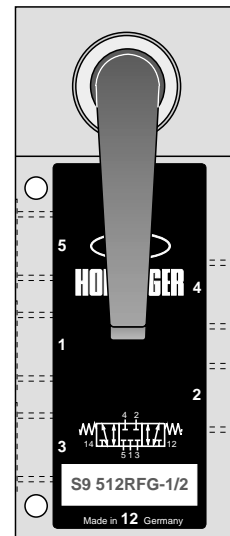
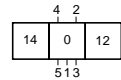
5/3 Way Valve

G1/2

Actuation: Rotary lever

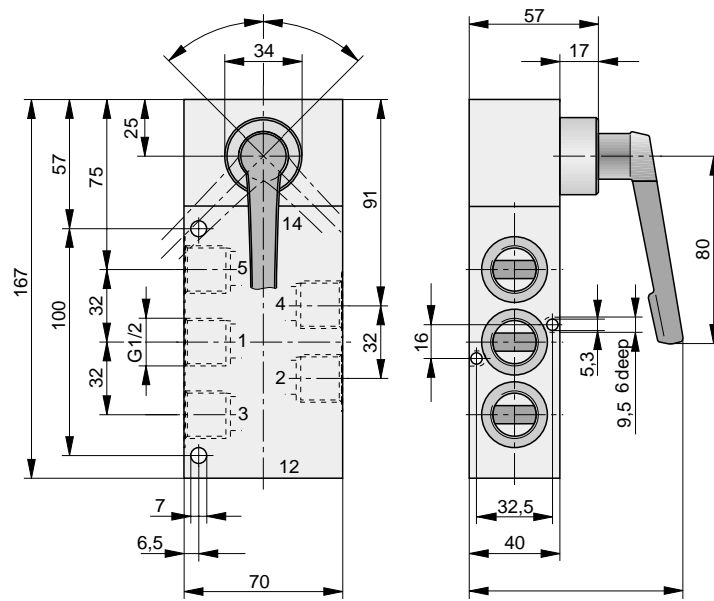
Series S9

S9 512...-1/2

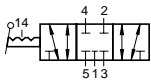
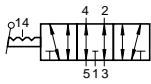
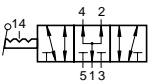
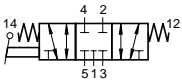
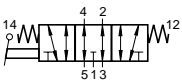
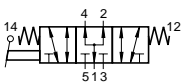


For product group list see 3.53.001E

Dimensions (mm)



Order Instructions

Actuation	Middle position function	Symbol	Type	Order Instructions Order No.
Rotary lever indexed in 3 switching positions	Middle position closed		S9 512G-1/2	PA 16380
	Middle position exhausted		S9 512E-1/2	PA 16381
	Middle position pressurized		S9 512B-1/2	PA 16382
Rotary lever spring return to middle position	Middle position closed		S9 512RFG-1/2	PA 16383
	Middle position exhausted		S9 512RFE-1/2	PA 16384
	Middle position pressurized		S9 512RFB-1/2	PA 16385