

Characteristics to VDI 3290		Pressures quoted as gauge pressure			
Characteristics	Symbol	Unit	Description		
<b>General Features</b>					
Type			Spool valve		
Mounting			2 screws M5 (M3)		
Tube connection			Thread		
Port size			G 1/8; 7.4 deep		
Weight (mass)		kg	0.280 - permanent signal version 0.415 - impulse version		
Installation			In any position		
Ambient temperature range	$\vartheta_{\min}$ $\vartheta_{\max}$	°C °C	-10 +60		
Medium temperature range	$\vartheta_{\min}$ $\vartheta_{\max}$	°C °C	-10 +70		
Medium			Filtered compressed air		
Lubrication			With or without oil mist lubrication <sup>1)</sup>		
<b>Pneumatic Characteristics</b>					
Nominal pressure	$p_n$	bar	6		
Operating pressure range	$p_{\min}$ $p_{\max}$	bar bar	Permanent signal version 2 10		
	$p_{\min}$ $p_{\max}$	bar bar	Impulse version 1.5 10		
Nominal flow	$Q_N$	l/min	500		
<b>Actuation</b>					
Electrical			Pilot operated or pilot operated with external pilot air		
Actuation pressure range	$p_{st \min}$ $p_{st \max}$	bar bar	2 10 permanent signal version		
	$p_{st \min}$ $p_{st \max}$	bar bar	1.5 10 impulse version		
Voltage			AC DC		
Nominal voltage*	Standard version	$U_n$	V	220	24
	Low watt. version	$U_n$	V	220	24
	Ex-proof version **	$U_n$	V	220	24
				Further voltages available on request	
Initial power consumption	Standard version		VA (W)	8.5	2.5
	Low watt. version		VA (W)	6.6	2.1
	Ex-proof version **		VA (W)	5.0	5.1
Continuous consumption	Standard version		VA (W)	6.0	2.5
	Low watt. version		VA (W)	3.9	2.1
	Ex-proof version **		VA (W)	5.0	5.1
Duty cycle	ED	%	100		
Electrical protection			IP65 to DIN 40050 (with plug)		
Insulating material			F (Ex-version E) to VDE 0580		
Connection			Plug to DIN 43650 form B <sup>2)</sup> Ex-version: cable 1200 mm long		

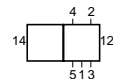
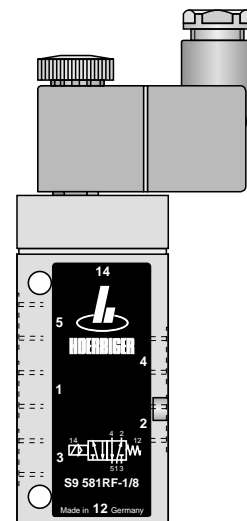
\* See Order Instructions for details

\*\* For explosion-proof versions different technical requirements apply, according to Declaration of Conformity

<sup>1)</sup> We recommend the use of mineral oil type VG32 to ISO 3448<sup>2)</sup> Plug for low wattage version available in DIN 43650 form A

# 5/2 Way Valve

## G1/8

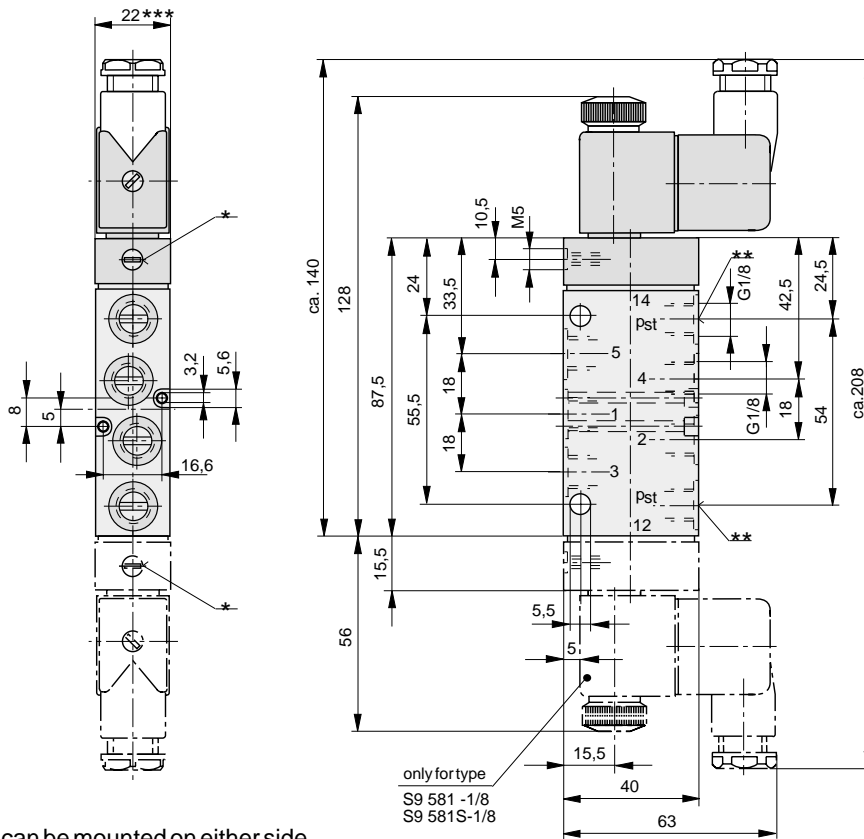
**Actuation:**
**Electrically pilot operated with standard solenoids**
**- by permanent signal**
**- by impulse**
**Series S9**
**S9 581..-1/8**

**Variants:**
**S = with external pilot air**


# HOERBIGER

**ORIGA**

**For product group list see 3.42.001E**
**Data Sheet No. 3.42.053E-1**

## Dimensions (mm)



- \* Manual override can be mounted on either side.
- \*\* Pilot air ports p<sub>st</sub> - only on Type S9 581S
- \*\*\* Solenoid width is 30 mm on ex-proof version and low wattage coil version.

## Order Instructions

Actuation	Return	Symbol	Type	Order Instructions Order No.
<b>Electrical by permanent signal</b>	Spring return		<b>S9 581RF-1/8-..</b>	<b>PA 10312-..33</b>
	with external pilot air		<b>S9 581S-RF-1/8-..</b>	<b>PA 10314-..33</b>
<b>Electrical by impulse</b>	Electrical by impulse		<b>S9 581-1/8-..</b>	<b>PA 10313-..33</b>
	with external pilot air		<b>S9 581S-1/8-..</b>	<b>PA 10315-..33</b>

Solenoid version	Nominal voltage	Applicable for	Key code	* For explosion-proof versions different technical requirements apply, according to Declaration of Conformity  Further voltages available on request.
Standard version	220 V/50 (60) Hz	110 V=	61	
	24 V=	60 V/50 (60) Hz	02	
Low wattage coil version	24 V=		13	
	220 V/50 (60) Hz		69	
Ex-proof version *	24 V=		48	
	220 V/50 (60) Hz		98	

Characteristics to VDI 3290		Pressures quoted as gauge pressure			
Characteristics	Symbol	Unit	Description		
<b>General Features</b>					
Type			Spool valve		
Mounting			2 screws M6 (M4)		
Tube connection			Thread		
Port size			G 1/4; 11 deep		
Weight (mass)		kg	0.6 - permanent signal version 0.7 - impulse version		
Installation			In any position		
Ambient temperature range	$\vartheta_{\min}$ $\vartheta_{\max}$	°C °C	-10 +60	Note: When using below freezing	
Medium temperature range	$\vartheta_{\min}$ $\vartheta_{\max}$	°C °C	-10 +70	point (°C) it is necessary to consult us.	
Medium			Filtered compressed air		
Lubrication			With or without oil mist lubrication <sup>1)</sup>		
<b>Pneumatic Characteristics</b>					
Nominal pressure	$p_n$	bar	6		
Operating pressure range	$p_{\min}$ $p_{\max}$	bar bar	Permanent signal version 2 10		(0-10 Type S)
	$p_{\min}$ $p_{\max}$	bar bar	Impulse version 1.5 (581)   2 (582) 10		
Nominal flow	$Q_N$	l/min	1300		
<b>Actuation</b>					
Electrical			Pilot operated, Pilot operated with external pilot air		
Actuation pressure range (Type S)	$p_{st \min}$ $p_{st \max}$	bar bar	Permanent signal version 2 10		2.5 (582)
	$p_{st \min}$ $p_{st \max}$	bar bar	Impulse version 1.5 (581) 10		
Voltage			AC	DC	
Nominal voltage*	Standard version	$U_n$	V	220	24
	Low watt. version	$U_n$	V	220	24
	Ex-proof-version **	$U_n$	V	220	24
			Further voltages available on request		
Initial power consumption	Standard version		VA (W)	8.5	2.5
	Low watt. version		VA (W)	6.6	2.1
	Ex-proof-version **		VA (W)	5.0	5.1
Continuous consumption	Standard version		VA (W)	6.0	2.5
	Low watt. version		VA (W)	3.9	2.1
	Ex-proof-version **		VA (W)	5.0	5.1
Duty cycle	ED	%	100	100	
Electrical protection			IP65 to DIN 40050 (with plug)		
Insulating material			F (Ex-vers. E) to VDE 0580		
Connection			Plug to DIN 43650 form B <sup>2)</sup> Ex-version: Cable 1200 mm long		

\* See Order Instructions for details

\*\* For explosion-proof versions different technical requirements apply, according to Declaration of Conformity

<sup>1)</sup> We recommend the use of mineral oil type VG32 to ISO 3448<sup>2)</sup> Plug for low wattage version available in DIN 43650 form A.

For product group list see 3.52.001E

# 5/2 Way Valve

## G1/4

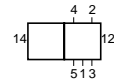
### Actuation:

**Electrically pilot operated with standard solenoids**

- by permanent signal
- by impulse

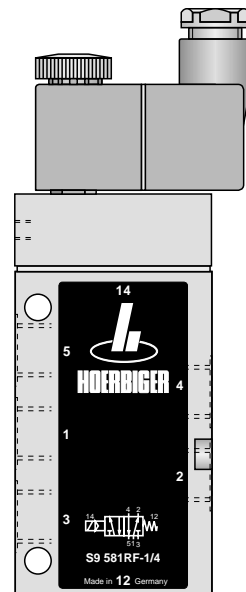
### Series S9

**S9 58.**



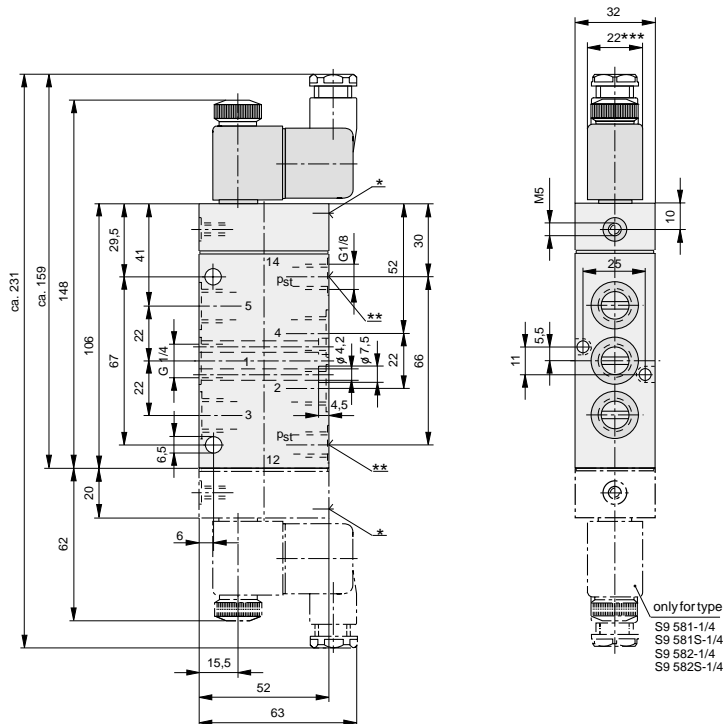
### Variants:

S = with external pilot air



**HOERBIGER**  
**ORIGA**

## Dimensions (mm)



- \* Manual override
- \*\* Pilot connection p<sub>st</sub> only required for types S9 581S and S9 582S
- \*\*\* Solenoid width is 30 mm on ex-proof version and low wattage coil version.

## Order Instructions

Actuation	Return	Symbol	Type	Order Instructions
				Order No.
<b>Electrical by permanent signal</b>	Spring return		<b>S9 581RF-1/4-..</b>	<b>PA 12679-...33</b>
with external pilot air	Spring return		<b>S9 581S-RF-1/4-..</b>	<b>PA 12681-...33</b>
<b>Electrical by impulse</b>	Electrical by impulse		<b>S9 581-1/4-..</b>	<b>PA 12680-...33</b>
with external pilot air	with external pilot air		<b>S9 581S-1/4-..</b>	<b>PA 12682-...33</b>
<b>Electrical by impulse differential piston</b>	Electrical by impulse		<b>S9 582-1/4-..</b>	<b>PA 12683-...33</b>
with external pilot air, differential piston	with external pilot air		<b>S9 582S-1/4-..</b>	<b>PA 12684-...33</b>

Solenoid version	Nominal voltage	Applicable for	Key code	* For explosion-proof versions different technical requirements apply, according to Declaration of Conformity  Further voltages available on request.
Standard version	220 V/50 (60) Hz	110 V=	61	
	24 V=	48 V/50 (60) Hz	02	
Low wattage version	24 V=		13	
	220 V/50 (60) Hz		69	
Ex-proof version *	24 V=		48	
	220 V/50 (60) Hz		98	

Characteristics to VDI 3290		Pressures quoted as gauge pressure			
Characteristics	Symbol	Unit	Description		
<b>General Features</b>					
Type			Spool valve		
Mounting			2 screws M6		
Tube connection			Thread		
Port size			G 1/2; 16 deep		
Weight (mass)		kg	1.0 - permanent signal version 1.1 - impulse version		
Installation			In any position		
Ambient temperature range	$\vartheta_{\min}$ $\vartheta_{\max}$	°C °C	-10 +60	Note: When using below freezing	
Medium temperature range	$\vartheta_{\min}$ $\vartheta_{\max}$	°C °C	-10 +70	point (°C) it is necessary to consult us.	
Medium			Filtered compressed air		
Lubrication			With or without oil mist lubrication <sup>1)</sup>		
<b>Pneumatic Characteristics</b>					
Nominal pressure	$p_n$	bar	6		
Operating pressure range	$p_{\min}$ $p_{\max}$	bar bar	Permanent signal version 2.2 10		(0-10 Type S)
	$p_{\min}$ $p_{\max}$	bar bar	Impulse version 1.5 (581)   2.5 (582) 10		
Nominal flow	$Q_N$	l/min	3500		
<b>Actuation</b>					
Electrical			Pilot operated Pilot operated with external pilot air		
Actuation pressure range (Type S)	$p_{\text{st min}}$ $p_{\text{st max}}$	bar bar	Permanent signal version 2.2 10		
	$p_{\text{st min}}$ $p_{\text{st max}}$	bar bar	Impulse version 1.5 (581)   2.5 (582) 10		
Voltage			AC	DC	
Nominal voltage*	Standard version	$U_n$	V	220	24
	Low watt. version	$U_n$	V	220	24
	Ex-proof-version **	$U_n$	V	220	24
			Further voltages available on request		
Initial power consumption	Standard version	VA (W)	11	4.8	
	Low watt. version	VA (W)	7.8	2.7	
	Ex-proof-version **	VA (W)	5.0	5.1	
Continuous consumption	Standard version	VA (W)	8.5	4.8	
	Low watt. version	VA (W)	4.9	2.7	
	Ex-proof-version **	VA (W)	5.0	5.1	
Duty cycle	ED	%	100	100	
Electrical protection			IP65 to DIN 40050 (with plug)		
Insulating material			F (Ex-version E) to VDE 0580		
Connection			Plug to DIN 43650 form B <sup>2)</sup> Ex-version: Cable 1200 mm long		

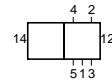
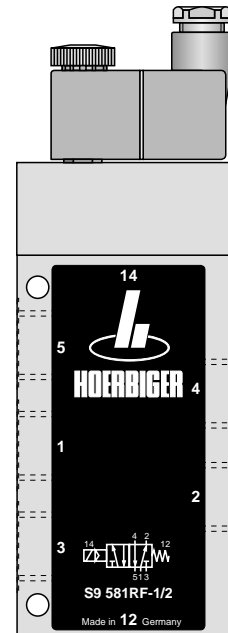
\* See Order Instructions for details

\*\* For explosion-proof versions different technical requirements apply, according to Declaration of Conformity

<sup>1)</sup> We recommend the use of mineral oil type VG32 to ISO 3448<sup>2)</sup> Plug for low wattage version available in DIN 43650 form A.

# 5/2 Way Valve

## G1/2

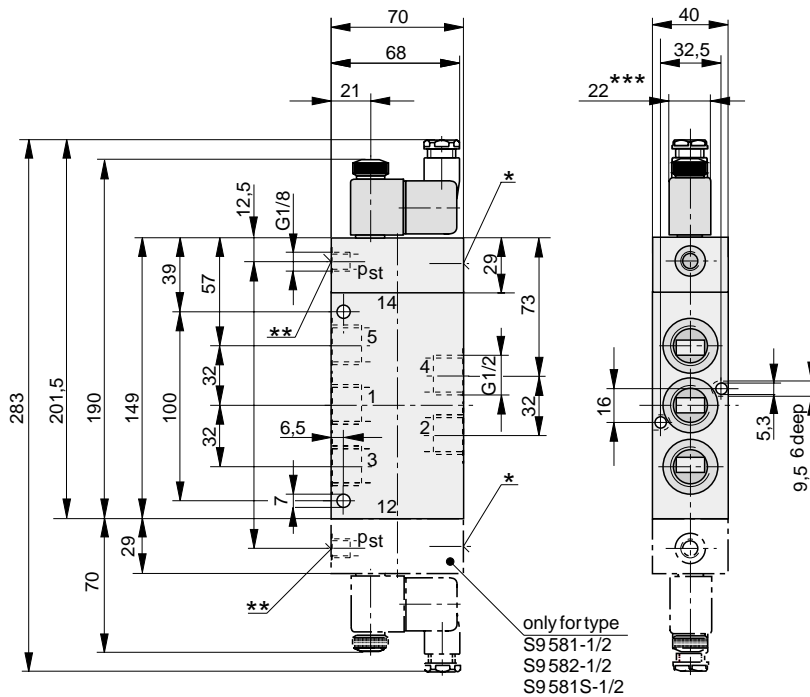
**Actuation:**
**Electrically pilot operated with standard solenoids**
**- by permanent signal  
- by impulse**
**Series S9**
**S9 58.**

**Variants:**
**S = with external pilot air**


# HOERBIGER

**ORIGA**

**For product group list see 3.53.001E**
**Data Sheet No. 3.53.053E-1**

## Dimensions (mm)



- \* Manual override
- \*\* Pilot connection  $p_{st}$  only required for types S9581S
- \*\*\* Solenoid width is 30 mm on ex-proof version and low wattage coil version

## Order Instructions

Actuation	Return	Symbol	Type	Order Instructions Order No.
<b>Electrical by permanent signal</b>	Spring return		<b>S9581RF-1/2-..</b>	<b>PA 16171-...33</b>
with external pilot air	Spring return		<b>S9581S-RF-1/2-..</b>	<b>PA 16174-...33</b>
<b>Electrical by impulse</b>	Electrical by impulse		<b>S9581-1/2-..</b>	<b>PA 16172-...33</b>
with external pilot air	with external pilot air		<b>S9581S-1/2-..</b>	<b>PA 16175-...33</b>
<b>Electrical by impulse differential piston</b>	Electrical by impulse		<b>S9582-1/2-..</b>	<b>PA 16173-...33</b>

Solenoid version	Nominal voltage	Applicable for	Key code
Standard version	220 V/50 (60) Hz	110 V=	61
	24 V=	48 V/50 (60) Hz	02
Low wattage version	24 V=		13
	220 V/50 (60) Hz		69
Ex-proof version *	24 V=		48
	220 V/50 (60) Hz		98

\* For explosion-proof versions different technical requirements apply, according to Declaration of Conformity

Further voltages available on request.