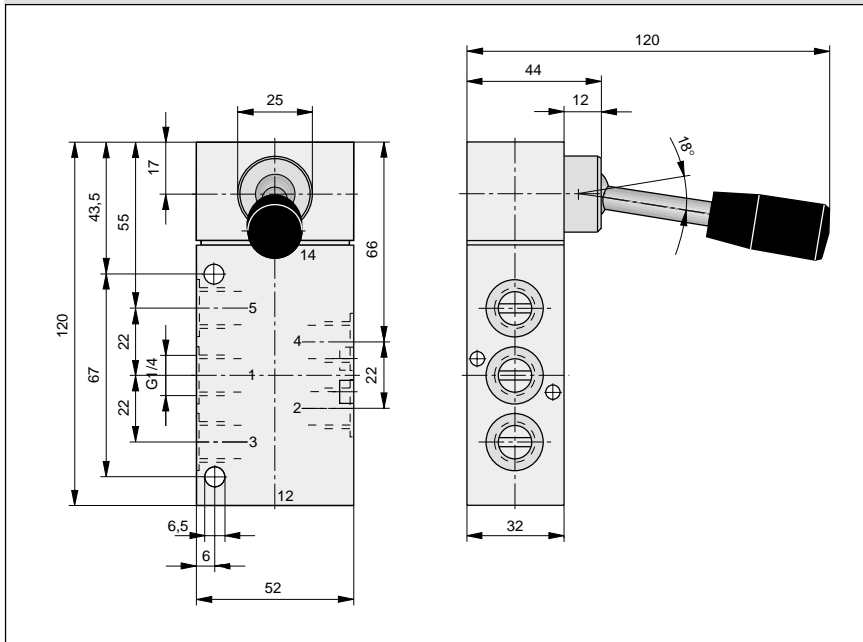


Characteristics to VDI 3290		Pressures quoted as gauge pressure	
Characteristics	Symbol	Unit	Description
General Features			
Type			Spool valve
Mounting			2 screws M6
Tube connection			Thread
Port size			G1/4; 11 deep
Weight (mass)		kg	0.52
Installation			In any position
Ambient temperature range	ϑ_{\min} ϑ_{\max}	°C °C	-10 +60
Medium temperature range	ϑ_{\min} ϑ_{\max}	°C °C	-10 +70
Medium			Filtered compressed air
Lubrication			With or without oil mist lubrication ¹⁾
Pneumatic Characteristics			
Nominal pressure	p_n	bar	6
Operating pressure range	p_{\min} p_{\max}	bar bar	0 10
Nominal flow	Q_N	l/min	1300
Actuation			
Manual control			Direct
Stroke		mm	6.5
Actuation force	F_b	N	Type S9511-1/4: 10 Type S9511RF-1/4: 15

¹⁾ We recommend the use of mineral oil type VG32 to ISO 3448

Dimensions (mm)



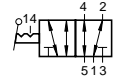
5/2 Way Valve

G1/4

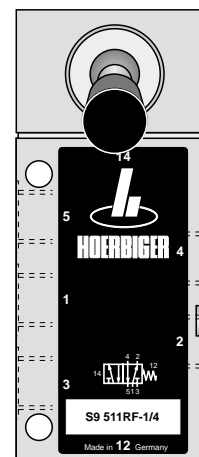
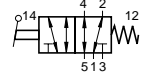
Actuation: Hand lever

Series S9

S9511-1/4



S9511RF-1/4



For product group list see 3.52.001E

Order Instructions:

S9511-1/4 PA 12671 (both lever positions indexed)
S9511RF-1/4 PA 12672 (with spring return)

Data Sheet No. 3.52.050E

HOERBIGER

ORIGA

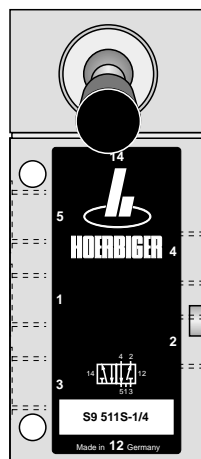
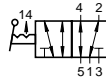
5/2 Way Valve

G1/4

Actuation:
Safety hand lever

Series S9

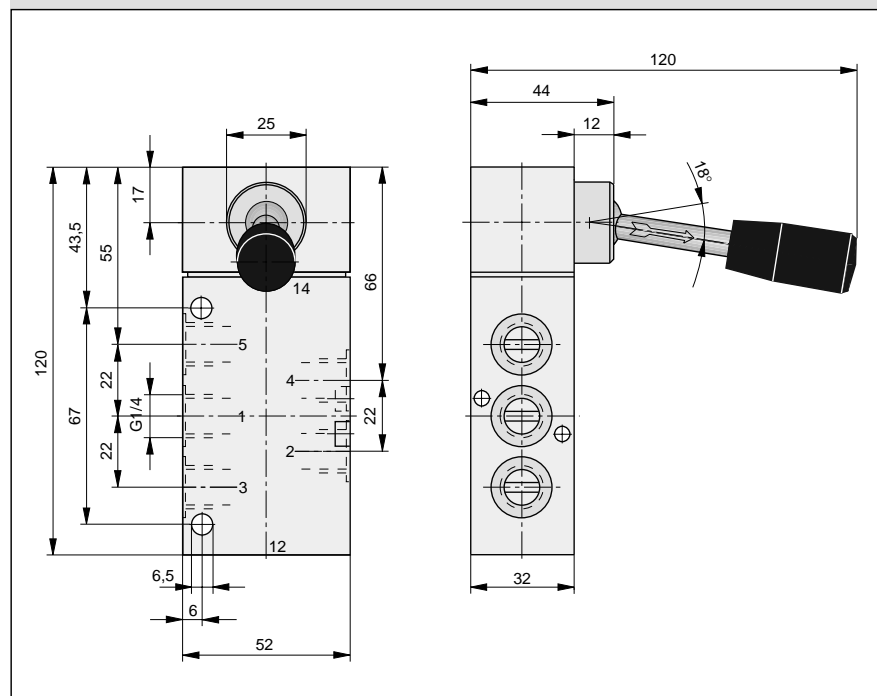
S9511S-1/4



Characteristics to VDI 3290		Pressures quoted as gauge pressure		
Characteristics	Symbol	Unit	Description	
General Features				
Type			Spool valve	
Mounting			2 screws M6	
Tube connection			Thread	
Port size			G1/4; 11 deep	
Weight (mass)		kg	0.52	
Installation			In any position	
Ambient temperature range	ϑ_{\min} ϑ_{\max}	°C °C	-10 +60	Note: When using below freezing point (°C) it is necessary to consult us.
Medium temperature range	ϑ_{\min} ϑ_{\max}	°C °C	-10 +70	
Medium				Filtered compressed air
Lubrication				With or without oil mist lubrication ¹⁾
Pneumatic Characteristics				
Nominal pressure	p_n	bar	6	
Operating pressure range	p_{\min}	bar	0	
	p_{\max}	bar	10	
Nominal flow	Q_N	l/min	1300	
Actuation				
Manual control			Direct	
Stroke		mm	6.5	
Actuation force	F_b	N	10	

¹⁾ We recommend the use of mineral oil type VG32 to ISO 3448

Dimensions (mm)



For product group list see 3.52.001E

Order Instruction:
S9511S-1/4 PA 12673 (both lever positions secured)

Data Sheet No. 3.52.051E

HOERBIGER
ORIGA

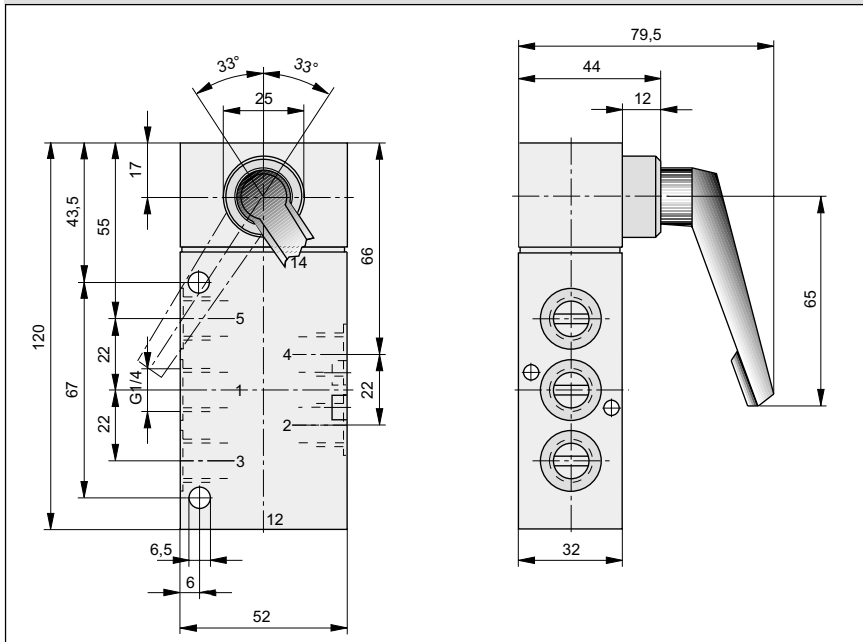
A1P388E00FX40X

The right to introduce technical modifications is reserved

Characteristics to VDI 3290		Pressures quoted as gauge pressure	
Characteristics	Symbol	Unit	Description
General Features			
Type			Spool valve
Mounting			2 screws M6
Tube connection			Thread
Port size			G1/4; 11 deep
Weight (mass)		kg	0.52
Installation			In any position
Ambient temperature range	ϑ_{\min} ϑ_{\max}	°C °C	-10 +60
Medium temperature range	ϑ_{\min} ϑ_{\max}	°C °C	-10 +70
Medium			Filtered compressed air
Lubrication			With or without oil mist lubrication ¹⁾
Pneumatic Characteristics			
Nominal pressure	p_n	bar	6
Operating pressure range	p_{\min} p_{\max}	bar bar	0 10
Nominal flow	Q_N	l/min	1300
Actuation			
Manual control			Direct
Stroke		mm	6.5
Actuation force	F_b	N	Type S9512-1/4: 10 Type S9512RF-1/4: 15

¹⁾ We recommend the use of mineral oil type VG32 to ISO 3448

Dimensions (mm)



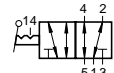
5/2 Way Valve

G1/4

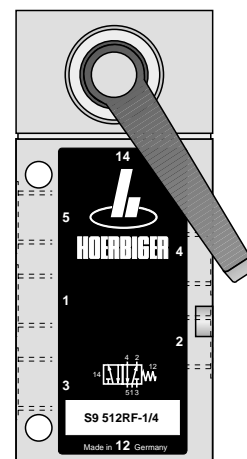
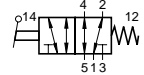
Actuation: Rotary lever

Series S9

S9512-1/4



S9512RF-1/4



For product group list see 3.52.001E

Order Instructions:

S9512-1/4 PA 12674 (both lever positions indexed)
S9512RF-1/4 PA 12675 (with spring return)

Data Sheet No. 3.52.052E

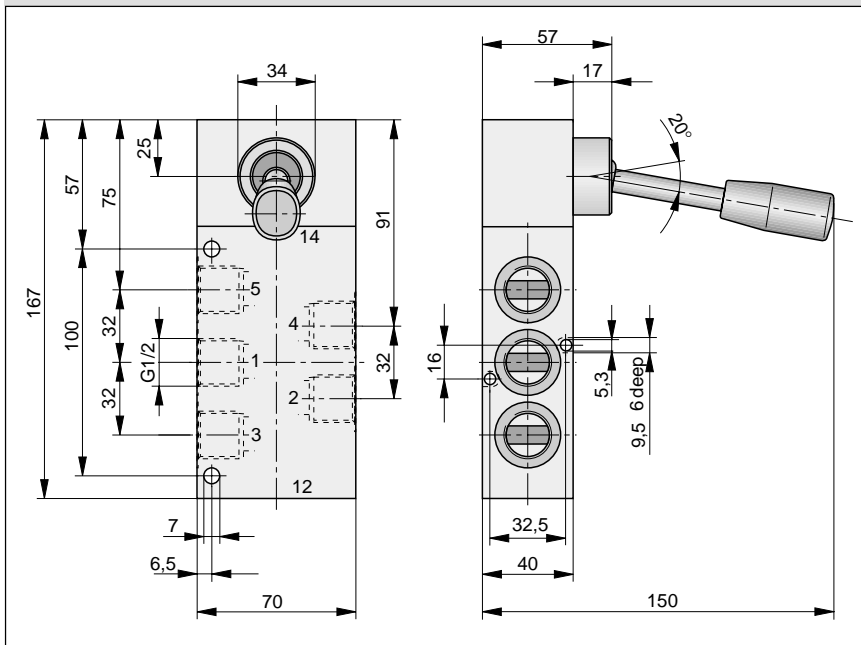
HOERBIGER

ORIGA

Characteristics to VDI 3290		Pressure quoted as gauge pressure	
Characteristics	Symbol	Unit	Description
General Features			
Type			Spool valve
Mounting			2 screws M6
Tube connection			Thread
Port size			G1/2; 16 deep
Weight (mass)		kg	1.20
Installation			In any position
Ambient temperature range	ϑ_{\min} ϑ_{\max}	°C °C	-10 +60
Medium temperature range	ϑ_{\min} ϑ_{\max}	°C °C	-10 +70
Medium			Filtered compressed air
Lubrication			With or without oil mist lubrication ¹⁾
Pneumatic Characteristics			
Nominal pressure	p_n	bar	6
Operating pressure range	p_{\min} p_{\max}	bar bar	0 10
Nominal flow	Q_N	l/min	3500
Actuation			
Manual control			Direct
Stroke		mm	9.4
Actuating force	F_b	N	Type S9511(S)-1/2: 15 Type S9511RF-1/2: 40

¹⁾ We recommend mineral oil of the viscosity class VG32 to ISO 3448

Dimensions (mm)



For product group list see 3.53.001E

Order Instructions:

S9511-1/2 PA 16367 (both switching positions indexed)
S9511RF-1/2 PA 16366 (with spring return)
S9511S-1/2 PA 16368 (secured in 2 switching positions)

Data Sheet No. 3.53.050E

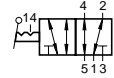
5/2 Way Valve

G1/2

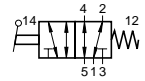
Actuation:
Hand lever
Safety hand lever

Series S9

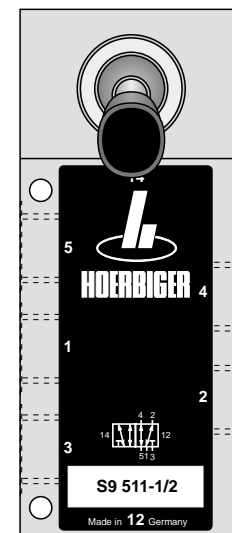
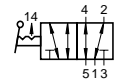
S9511-1/2



S9511RF-1/2



S9511S-1/2



HOERBIGER
ORIGA

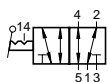
5/2 Way Valve

G1/2

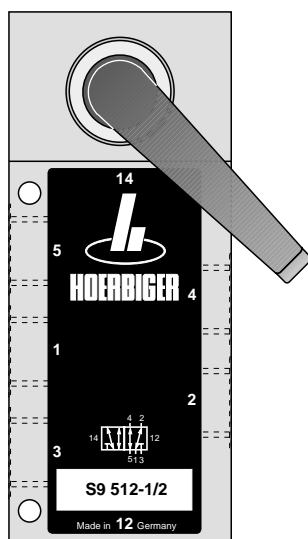
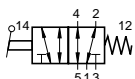
Actuation: Rotary Lever

Series S9

S9 512-1/2



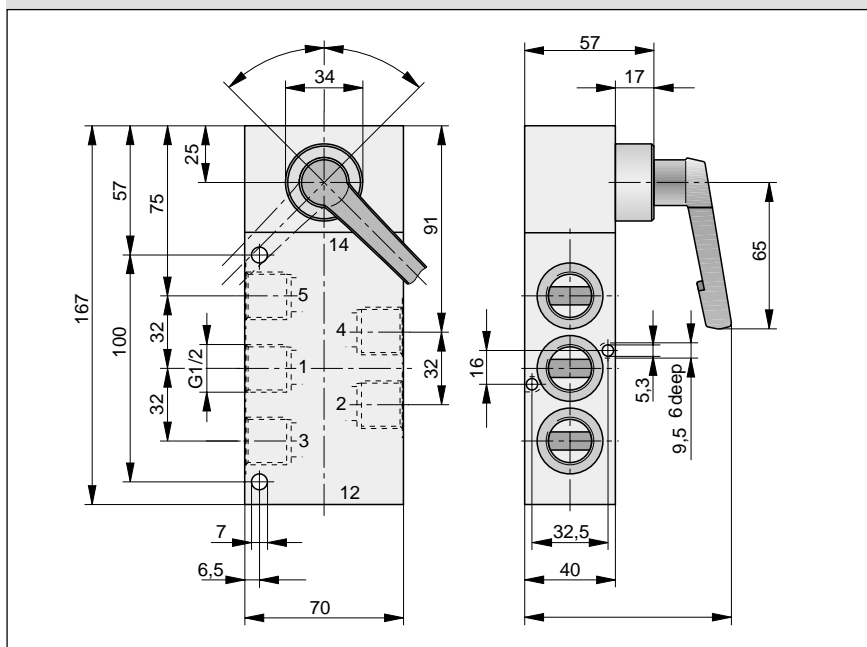
S9 512RF-1/2



Characteristics to VDI 3290		Pressure quoted as gauge pressure		
Characteristics	Symbol	Unit	Description	
General Features				
Type			Spool valve	
Mounting			2 screws M6	
Tube connection			Thread	
Port size			G1/2; 16 deep	
Weight (mass)		kg	1.20	
Installation			In any position	
Ambient temperature range	ϑ_{\min} ϑ_{\max}	°C °C	-10 +60	Note: When using below freezing point (°C), it is necessary to consult us.
Medium temperature range	ϑ_{\min} ϑ_{\max}	°C °C	-10 +70	
Medium			Filtered compressed air	
Lubrication			With or without oil mist lubrication ¹⁾	
Pneumatic Characteristics				
Nominal pressure	p_n	bar	6	
Operating pressure range	p_{\min}	bar	0	
	p_{\max}	bar	10	
Nominal flow	Q_N	l/min	3500	
Actuation				
Manual control			Direct	
Stroke		mm	9.4	
Actuating force	F_b	N	Type S9 512-1/2: 5 Type S9 512RF-1/2: 15	

¹⁾ We recommend mineral oil of the viscosity class VG32 to ISO 3448

Dimensions (mm)



For product group list see 3.53.001E

Order Instructions:

S9 512-1/2 PA 16378 (both switching positions indexed)
S9 512RF-1/2 PA 16379 (with spring return)



Data Sheet No. 3.53.051E

A1P456E00JAA40X

The right to introduce technical modifications is reserved