

A1P165E00FX40X

The right to introduce technical modifications is reserved

Characteristics to VDI 3290		Pressures quoted as gauge pressure	
Characteristics	Symbol	Unit	Description
<b>General Features</b>			
System			Poppet valve
Mounting			After removing the rubber footing 4 screws M8
Tube connection			Thread
Port size			G1/4
Weight (mass)		kg	1.5
Installation			In any position
Ambient temperature range	$\vartheta_{\min}$ $\vartheta_{\max}$	°C °C	-10 +55
Medium temperature range	$\vartheta_{\min}$ $\vartheta_{\max}$	°C °C	-10 +60
Medium			Filtered compressed air
Lubrication			Oil mist lubrication compatible with Buna N
<b>Pneumatic Characteristics</b>			
Nominal pressure	$p_n$	bar	6
Operating pressure range	$p_{\min}$ $p_{\max}$	bar bar	0 10
Nominal flow	$Q_N$	l/min	1400
<b>Actuation</b>			
Manual control			Direct
Stroke		mm	2
Actuating force	F <sub>b</sub>	N	approx. 30    Type: F 531RF-08 Type: F 531-08

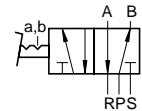
# 5/2 Way Valve

## G1/4

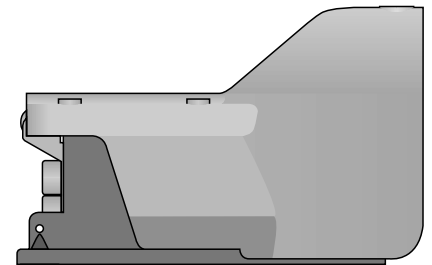
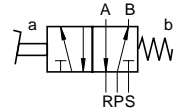
Actuation: Pedal

Series F

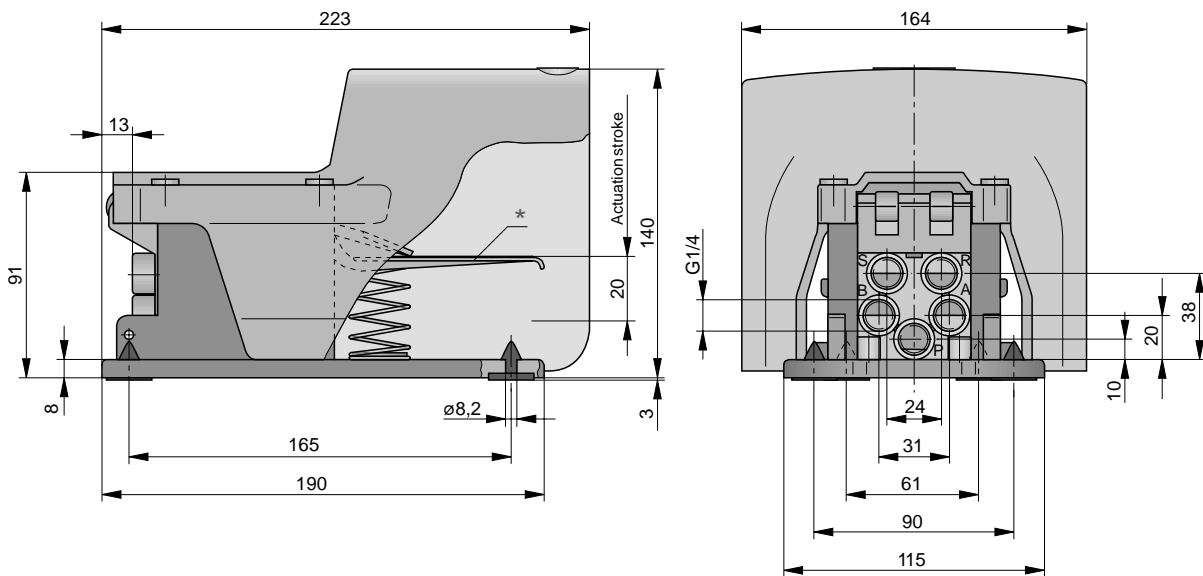
F 531..-08



F 531RF-08



## Dimensions (mm)



\* Only for version "both switch positions indexed" - return is only effected after actuating the locking pedal.

Mounting instruction:  
Only use screw connections with  
max. wrench size across flats of 15.

## Order Instructions

Actuation	Return	Symbol	Type	Order Instructions Order No.
Pedal	Spring return		<b>F 531RF-08</b>	<b>KZ4413</b>
Pedal both switch positions indexed	Without return		<b>F 531-08</b>	<b>KZ4412</b>