

A1P204E00DX00X

The right to introduce technical modifications is reserved

Characteristics to VDI 3290			Pressures quoted as gauge pressure	
Characteristics	Symbol	Unit	Description	
General Features				
System			Poppet valve	
Mounting			2 screws M6	
Tube connection			Thread	
Port size			G1/8	
Weight (mass)		kg	0.8	
Installation			In any position	
Ambient temperature range	ϑ_{\min} ϑ_{\max}	°C °C	-10 +55	Note: When using below freezing point (°C) it is necessary to consult us
Medium temperature range	ϑ_{\min} ϑ_{\max}	°C °C	+5* +60	
Medium			Filtered and lubricated or filtered and unlubricated air	
Lubrication			None or oil mist lubrication	
Pneumatic Characteristics				
Nominal pressure	p_n	bar	6	
Operating pressure range	p_{\min} p_{\max}	bar bar	0 10	
Nominal flow	Q_N	l/min	350	
Flow direction			1→2 normally closed 3→2 normally open	
Actuation				
Manual control			Direct, pedal	
Stroke		mm	1.5-3	
Actuating force	F_b	N	12	

* -10 °C when using dry compressed air

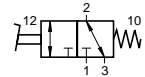
3/2 Way Valve

G1/8

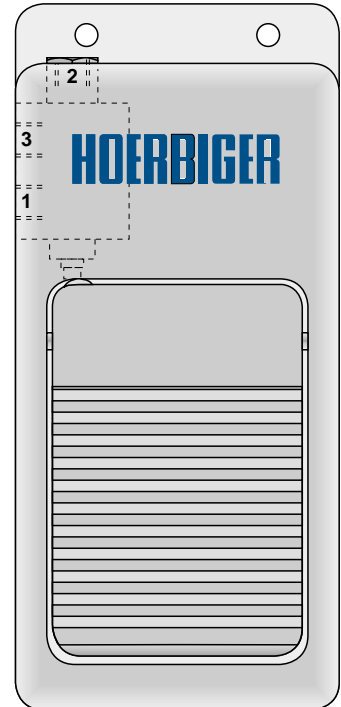
Actuation: Pedal

Series K9

K9 331RF-1/8



Non-overlapping poppet valve with low actuating force and short response time. Applicable as normally closed or normally open valve (see drawing).



For product group list see 3.19.001E
For data sheets see 3.19.002E-3.19.010E

Data Sheet No. 3.19.009E-1

