

Soft Start Fittings



To prevent the risk of industrial accidents, the pressure increase in the downstream circuit allows soft start of the installation.

Ø metric:
8 to 10 mm

Technical Characteristics

- **Compatible Fluids:** Compressed air
- **Working Pressure:** 3 to 10 bar
- **Working Temperature:** -15°C to +60°C

Max. Tightening Torques	Threads		daN.m
	G1/4		1.3
	G3/8		1.5
Flow Characteristics	Model	Flow at 6 bar	Kv
	7860 08 13	1500 NI/min	0.80
	7860 10 13	2100 NI/min	1.20
Flow Characteristics	Model	Flow at 6 bar	Kv
	7860 10 17	2200 NI/min	1.30
	7870 08 13	1500 NI/min	0.80
	7870 10 13	2000 NI/min	1.15
	7870 10 17	2000 NI/min	1.15

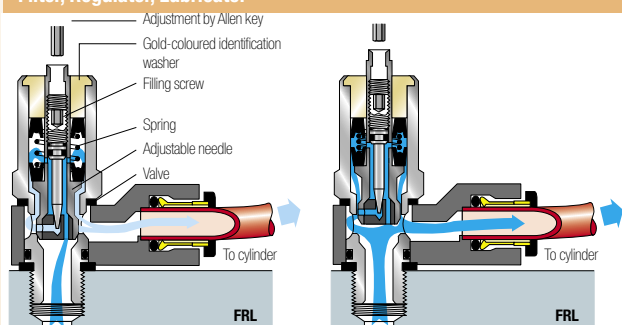
Component Materials

Silicone-free

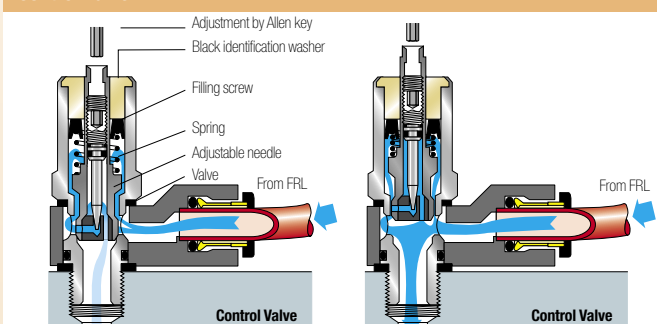


Operation

Filter, Regulator, Lubricator



Control Valve



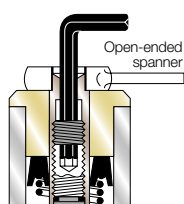
Adjustment of the Filling Screw

Adjusting the screw to regulate the flow of air optimises the time taken to pressurise depending on the air volume to be refilled and the system requirements.

To adjust:

- immobilise the piston using a spanner
- adjust the screw with an Allen key
 - 1.5 mm key for 8 mm diameter
 - 2.5 mm key for 10 and 12 mm diameter

Max. tightening torque: 0.1 daN.m



Advantages

Protection of equipment and personnel:

- Prevents the risk of damage after any stoppage which requires the system to be vented
- Returns the control valve to its initial position in total safety
- Adjustment of the pressurisation speed

Mounted on FRL:

- 7860: yellow identification washer
- Protection for the whole system
- Simultaneous pressurisation speed of the whole system

Mounted on Control Valve:

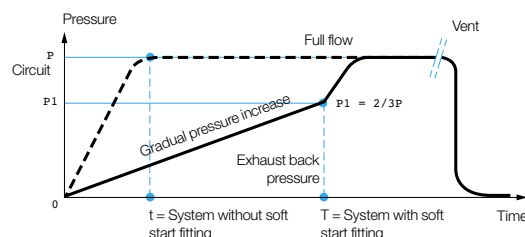
- 7870: black identification washer
- Protection of individual circuits
- Mounted on the control valve, it optimises the pressurisation speed of a specific cylinder

Regulations

- RoHS
- REACH
- PED

Cylinder Pressure Cycle

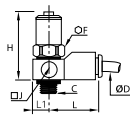
When the downstream pressure reaches 2/3 of the supply pressure, full flow is automatically established



Soft Start Fittings

7860 Soft Start Fitting for Isolating Valve, Male BSPP Thread

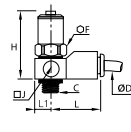
Technical polymer, Nickel-plated brass, NBR



ØD	C		F	H max	H min	J	L	L1	Kg
8	G1/4	7860 08 13	17	61	54	20	35	10	0.064
10	G1/4	7860 10 13	22	62	55	25	41	12.5	0.112
	G3/8	7860 10 17	22	62	55	25	41	12.5	0.115

7870 Soft Start Fitting for Control Valve, Male BSPP Thread

Technical polymer, Nickel-plated brass, NBR

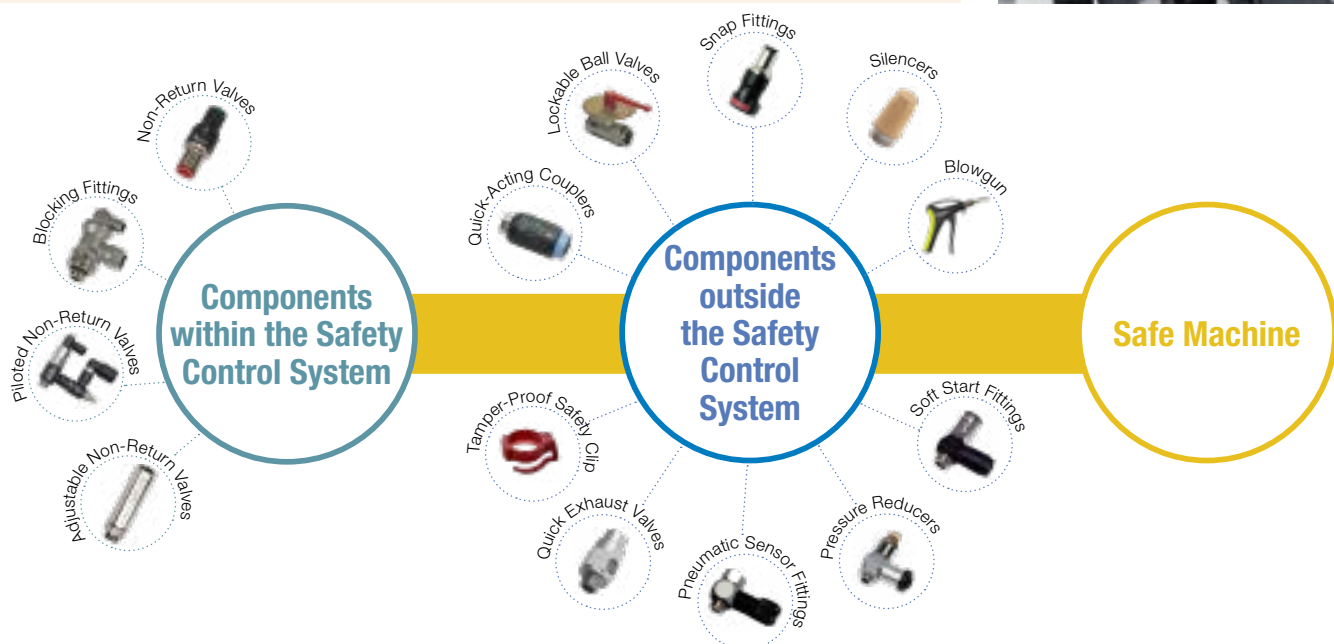


ØD	C		F	H max	H min	J	L	L1	Kg
8	G1/4	7870 08 13	17	61	54	20	35	10	0.066
10	G1/4	7870 10 13	22	62	55	25	41	12.5	0.113
	G3/8	7870 10 17	22	62	55	25	41	12.5	0.116

Our Safety Programm: Conformity to 2006/42/EC Directive and ISO 13849-1 Standard

More than 250 dedicated part numbers for:

- Zero accident for our customers
- Machine integrity
- Compliance of equipment



Pressure Regulator Fittings



Pressure regulators stabilise at the maximum determined value the pressure, whatever the fluctuations of the pressure upstream.

Ø metric:
4 to 10 mm

Technical Characteristics (7300)

- **Compatible Fluids:** Compressed air
- **Working Pressure:** Upstream pressure: 1 to 16 bar
Downstream pressure: 1 to 8 bar
- **Working Temperature:** -10°C to +70°C

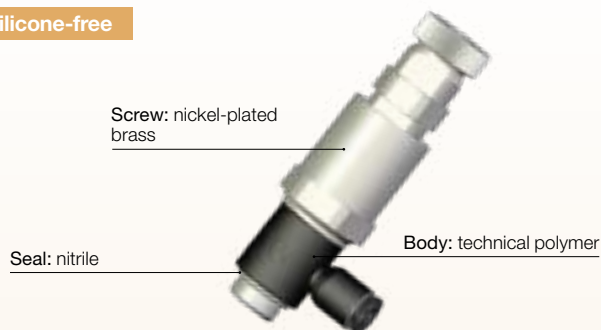
Tightening Torque (BSPT)	Thread	G1/8	G1/4	G3/8
	daN.m	0.4	0.5	0.6

Advantages

- Lockable adjustment possible of the setpoint
- Output pressure adjustment options marked on the screw
- Installation in a manifold allows optimum output pressures to be delivered to specific parts of the circuit
- Designed for applications where cylinder force needs to be controlled: marking, sleeving, crimping cylinders etc.

Component Materials (7300)

Silicone-free



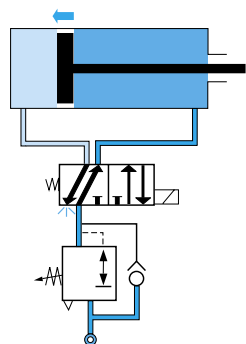
Regulations

- RoHS
- REACH
- PED

Operation

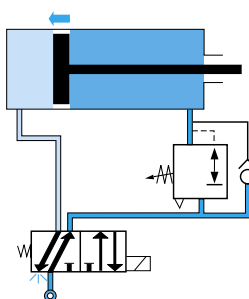
Mounting Upstream of the Control Valve

Adjustment of the piston feed pressure in both directions

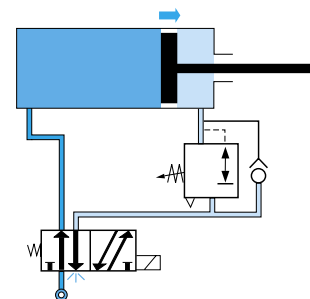


Mounting Downstream of the Control Valve

Phase 1: adjustment of the piston speed in a single direction

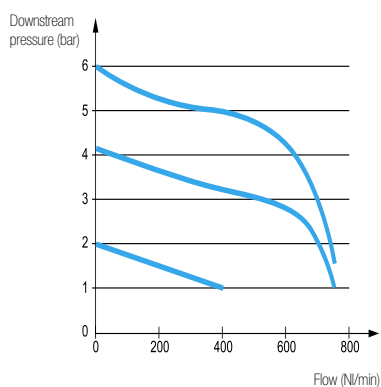


Phase 2: in return direction, pressure is supplied through the control valve

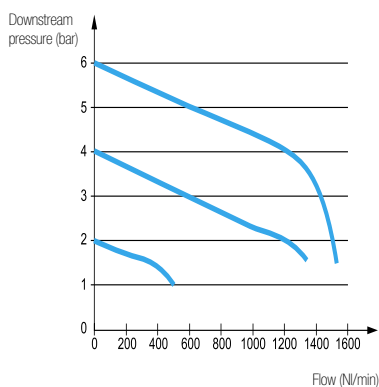


Flow Characteristics at 7 bar (Nl/min)

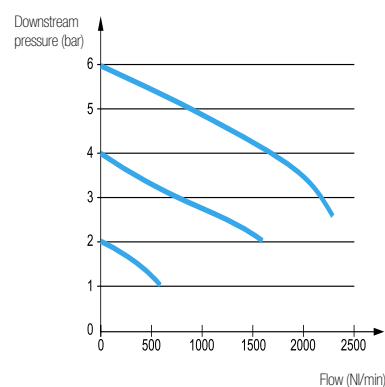
G1/8 Models



G1/4 Models



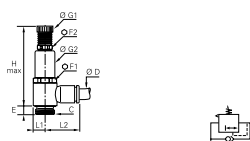
G3/8 Models



Pressure Regulator Fittings

7300 Pressure Regulator, Male BSPP Thread

Technical polymer, Nickel-plated brass, NBR



ØD	C		E	F1	F2	G1	G2	H max	L1	L2	Kg
4	G1/8	7300 04 10	4.5	17	13	14	17	65	7	18.5	0.047
	G1/8	7300 06 10	4.5	17	13	14	17	65	7	20	0.047
6	G1/4	7300 06 13	7.5	17	13	14	17	74.5	9.5	22	0.065
	G1/8	7300 08 10	4.5	17	13	14	17	65	7	25	0.048
8	G1/4	7300 08 13	7.5	17	13	14	17	74.5	9.5	27	0.066
	G3/8	7300 08 17	8.5	22	17	18.5	22	84	11.5	28.5	0.122
10	G1/4	7300 10 13	7.5	17	13	14	17	74.5	9.5	29	0.066
	G3/8	7300 10 17	8.5	22	17	18.5	22	84	11.5	30.5	0.122

DRV Pressure Reducing Valve

Brass



A	A1		HEX	L	L1	Const. Supply Pressure	max. Supply Pressure
G1/4	G1/4	DRV13/20	17	34	9	2 bar	15 bar
G1/4	G1/4	DRV13/30	17	34	9	3 bar	15 bar
G1/4	G1/4	DRV13/40	17	34	9	4 bar	15 bar
G1/4	G1/4	DRV13/50	17	34	9	5 bar	15 bar
G1/4	G1/4	DRV13/60	17	34	9	6 bar	15 bar
G1/4	G1/4	DRV13/70	17	34	9	7 bar	15 bar
G1/4	G1/4	DRV13/80	17	34	9	8 bar	15 bar
G1/4	G1/4	DRV13/100	17	34	9	10 bar	15 bar