

Fittings and accessories

Metal push-in fittings

Connection system for fast assembly / dismantling without tools

- Metal fittings (nickel-plated brass)
- Tubing clamped on outside diameter by precision collet
- Tubing sealed on outside diameter by O-rings
- Integrated O-rings (on types with parallel thread) for reliable thread sealing (e.g. on bevelled or uneven surfaces) and easier handling (no additional seal rings required)
- Connecting the tubing: simply push the tube into the collet up to the stop
- Disconnecting the tubing: push the release ring back and pull the tube out

Characteristics

Characteristics	Symbol	Unit	Description
Connecting thread*			M5, G1/8, G1/4, G3/8, G1/2 (parallel and taper)
Tubing outside diameter*		mm	Ø4, Ø5, Ø6, Ø8, Ø10, Ø12, Ø14
Material			
- Housing			Nickel-plated brass
- O-rings			Silicone-free NBR
- Clamp			Stainless steel AISI316
- Thrust ring			Synthetics, black
Operating pressure range	p_{max}	bar	16 to 20°C
Temperature range	$T_{min/max}$	°C	-20 to +70 (other temperature ranges on request)
Medium			Compressed air (other media on request)

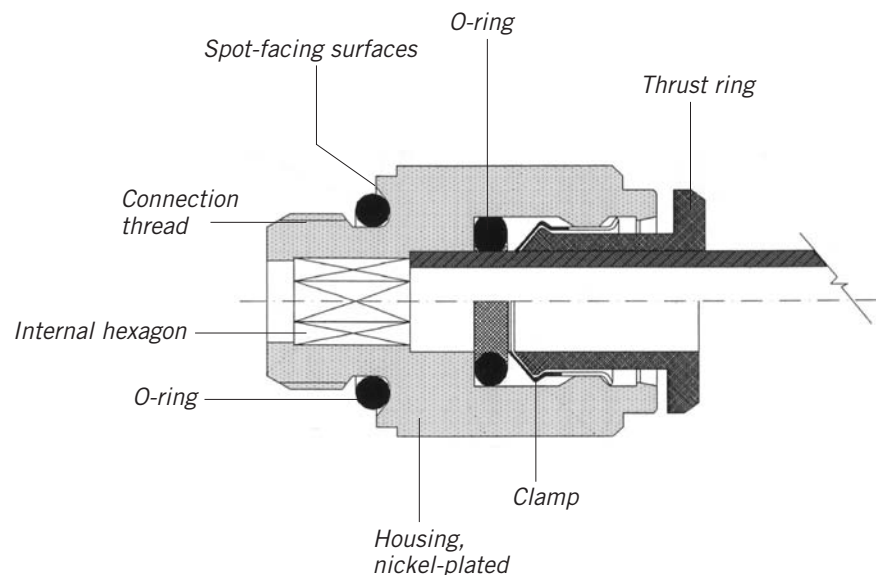
* depending on version

Tubing recommendations¹⁾

Tubing type	Calibrated tubing, surface hardness min. 65 Shore
Tubing outside diameter*	Ø4, Ø5, Ø6, Ø8, Ø10, Ø12, Ø14
Tubing diameter tolerance (outside diameter)	Ø4 to Ø8 mm: +0.1 / -0.1 Ø10 to Ø14 mm: +0.15 / -0.1
Tubing material	PA 12 or similar

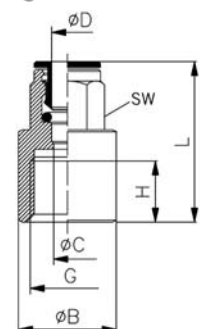
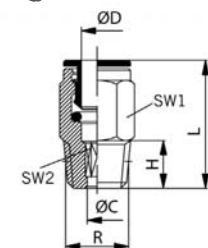
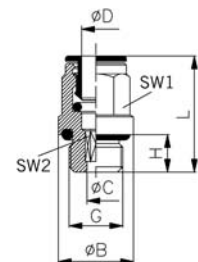
¹⁾ see our range of tubing (Type PS-..) in section on tubing and hoses, pages 114, 115

Function



Fittings and accessories

Metal push-in fittings



Straight adaptor, male parallel thread with O-ring

Order Instructions Type	Bestell-Nr	ØD	G	ØC	ØB	H	L	SW1	SW2
GS-54Msv	KW 0006	4	M5	2.5	9.0	4.0	20.5	Ø9.0	2.5
GS-184Msv	KW 0007	4	G1/8	2.6	13.5	6.0	20.0	9.0	2.5
GS-144Msv	KW 0861	4	G1/4	2.6	17.0	8.0	21.0	9.0	2.5
GS-55Msv	KW 0008	5	M5	2.6	9.5	4.0	22.0	Ø9.5	2.5
GS-185Msv	KW 0009	5	G1/8	4.2	13.5	6.0	22.0	10.0	4.0
GS-145Msv	KW 0010	5	G1/4	4.2	17.0	8.0	22.0	10.0	4.0
GS-56Msv	KW 0011	6	M5	2.6	10.5	4.0	22.5	Ø10.5	2.5
GS-186Msv	KW 0012	6	G1/8	4.2	13.5	6.0	24.0	11.0	4.0
GS-146Msv	KW 0013	6	G1/4	4.2	17.0	8.0	24.0	11.0	4.0
GS-188Msv	KW 0014	8	G1/8	5.2	12.8	6.0	26.5	13.0	5.0
GS-148Msv	KW 0015	8	G1/4	6.2	17.0	8.0	25.0	13.0	6.0
GS-388Msv	KW 0016	8	G3/8	6.2	20.0	9.0	25.0	13.0	6.0
GS-1410Msv	KW 0017	10	G1/4	7.3	16.0	8.0	29.0	16.0	7.0
GS-3810Msv	KW 0018	10	G3/8	8.3	21.0	9.0	29.5	16.0	8.0
GS-1210Msv	KW0982	10	G1/2	8.3	24.0	11.0	31.0	16.0	8.0
GS1214Msv	KW0019	12	G1/4	7.3	16.0	8.0	31.0	18.0	7.0
GS3812Msv	KW0020	12	G3/8	10.3	21.0	9.0	31.0	18.0	10.0
GS1212Msv	KW0021	12	G1/2	10.3	24.0	11.0	31.0	18.0	10.0
GS1214Msv	KW0022	14	G1/2	12.3	25.0	11.0	34.0	21.0	12.0

Straight adaptor, male taper thread

Order Instructions Type	Order No.	ØD	R tap.	ØC	H	L	SW1	SW2
GSK-184Msv	KW 0001	4	R1/8	2.6	7.0	22.5	10	2.5
GSK-186Msv	KW 0002	6	R1/8	4.2	7.0	24.5	11	4.0
GSK-146Msv	KW 0003	6	R1/4	4.2	11.0	24.5	14	4.0
GSK-188Msv	KW 0004	8	R1/8	5.2	7.0	27.5	13	5.0
GSK-148Msv	KW 0005	8	R1/4	5.2	11.0	27.5	14	5.0
GSK-388Msv	KW 0862	8	R3/8	5.2	11.5	28.0	17	5.0
GSK-1410Msv	KW 0863	10	R1/4	7.3	11.0	32.5	16	7.0
GSK-3810Msv	KW 0864	10	R3/8	8.3	11.5	32.5	17	8.0

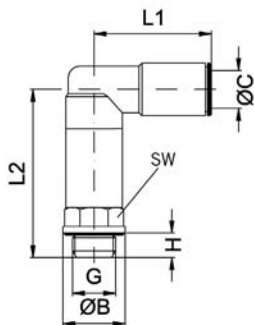
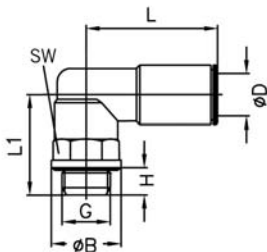
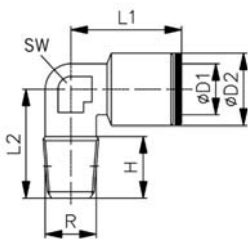
Pressure gauge adaptor

Order Instructions Type	Order No.	ØD	G	ØC	ØB	H	L	SW
MS-184Msv	KW 0030	4	G1/8	3.0	11.0	6.0	26.5	9
MS-185Msv	KW 0031	5	G1/8	4.0	12.0	6.0	27.0	10
MS-186Msv	KW 0032	6	G1/8	5.0	11.0	6.0	27.0	11
MS-146Msv	KW 0033	6	G1/4	5.0	16.0	13.0	31.0	11
MS-188Msv	KW 0034	8	G1/8	7.0	11.0	6.0	28.0	13
MS-148Msv	KW 0035	8	G1/4	7.0	17.0	10.0	32.0	13
MS-1410Msv	KW 0036	10	G1/4	9.0	16.0	13.0	32.0	16

Dimensions in mm

Fittings and accessories

Metal push-in fittings



Elbow adaptor, male taper thread

Order Instructions		ØD1	R tap.	ØD2	H	L1	L2	SW
Type	Order No.							
LSK-184Msv	KW 0037	4	R1/8	9.0	8.0	18.6	16.5	10
LSK-186Msv	KW 0038	6	R1/8	11.0	8.0	22.5	16.5	10
LSK-146Msv	KW 0039	6	R1/4	11.0	12.0	23.0	22.0	12
LSK-188Msv	KW 0040	8	R1/8	13.0	9.0	25.0	18.5	11
LSK-148Msv	KW 0041	8	R1/4	13.0	12.0	25.0	22.0	11
LSK-1410Msv	KW 0043	10	R1/4	15.0	12.0	25.0	22.0	14

Elbow adaptor, swivelling, male parallel thread with O-ring

Order Instructions		ØD	G	ØB	H	L	L1	SW
Type	Order No.							
LDS-54Msv	KW 0049	4	M5	8.0	4.0	18.0	14.5	9
LDS-184Msv	KW 0050	4	G1/8	13.0	6.0	20.0	20.0	13
LDS-55Msv	KW 0051	5	M5	8.0	4.0	21.0	14.5	9
LDS-185Msv	KW 0052	5	G1/8	13.0	6.0	21.0	20.0	13
LDS-145Msv	KW 0053	5	G1/4	16.0	8.0	21.0	24.0	13
LDS-56Msv	KW 0872	6	M5	8.0	4.0	21.0	14.5	9
LDS-186Msv	KW 0054	6	G1/8	13.0	6.0	21.0	20.0	13
LDS-146Msv	KW 0055	6	G1/4	16.0	8.0	21.0	24.0	13
LDS-188Msv	KW 0056	8	G1/8	13.0	6.0	24.0	20.0	13
LDS-148Msv	KW 0057	8	G1/4	16.0	8.0	24.0	24.0	13
LDS-388Msv	KW 0058	8	G3/8	20.0	9.0	24.0	25.5	13
LDS-1410Msv	KW 0059	10	G1/4	16.0	8.0	27.0	24.0	16
LDS-3810Msv	KW 0060	10	G3/8	20.0	9.0	27.0	28.0	16
LDS-1210Msv	KW 0983	10	G1/2	25.0	11.0	27.0	30.0	16
LDS-1412Msv	KW 0061	12	G1/4	16.0	8.0	28.0	28.5	16
LDS-3812Msv	KW 0062	12	G3/8	20.0	9.0	28.0	28.5	20
LDS-1212Msv	KW 0873	12	G1/2	25.0	11.0	28.0	33.5	20
LDS-1214Msv	KW 0835	14	G1/2	25.0	11.0	31.0	33.5	20

For frequent swivelling, see Type ESS page 63

Extended elbow adaptor, swivelling, male parallel thread with O-ring

Order Instructions		ØD1	G	ØB	H	L1	L2	SW
Type	Order No.							
LDSSL-186Msv	KW 0756	6	G1/8	13	6	21.0	33.0	13
LDSSL-146Msv	KW 0757	6	G1/4	16	8	21.0	37.7	13
LDSSL-188Msv	KW 0754	8	G1/8	13	6	24.0	33.0	13
LDSSL-148Msv	KW 0755	8	G1/4	16	8	24.0	37.7	13

Dimensions in mm

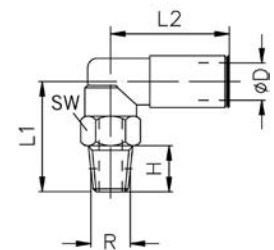
Fittings and accessories

Metal push-in fittings

Elbow adaptor, swivelling, male taper thread

Order Instructions		ØD	R tap.	L1	L2	H	SW
Type	Order No.						
LDSK-184Msv	KW 0044	4	R1/8	20.2	20.0	7.0	13
LDSK-186Msv	KW 0045	6	R1/8	20.2	21.0	7.0	13
LDSK-146Msv	KW 0046	6	R1/4	25.2	21.0	11.0	14
LDSK-188Msv	KW 0047	8	R1/8	20.2	24.0	7.0	13
LDSK-148Msv	KW 0048	8	R1/4	25.0	24.0	11.0	14
LDSK-388Msv	KW 0867	8	R3/8	28.0	24.0	11.0	18
LDSK-1410Msv	KW 0868	10	R1/4	26.0	27.0	11.0	16
LDSK-3810Msv	KW 0869	10	R3/8	30.0	27.0	11.0	16
LDSK-3812Msv	KW 0870	12	R3/8	32.5	28.0	11.0	20

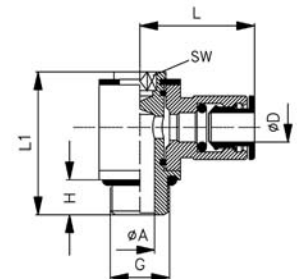
For frequent swivelling, see Type ESS below



Banjo elbow adaptor, male parallel thread with O-ring

Order Instructions		ØD	G	ØA	H	L1	L	SW
Type	Order No.							
ESS-54Msv	KW 0148	4	M5	2.0	4	17.0	18.5	2
ESS-184Msv	KW 0149	4	G1/8	5.5	6	25.0	21.0	3
ESS-55Msv	KW 0150	5	M5	2.0	4	17.0	19.5	2
ESS-185Msv	KW 0151	5	G1/8	5.5	6	25.0	22.5	3
ESS-186Msv	KW 0152	6	G1/8	5.5	6	25.0	23.5	3
ESS-188Msv	KW 0154	8	G1/8	5.5	6	25.0	24.5	3
ESS-146Msv	KW 0153	6	G1/4	7.8	8	29.3	24.5	4
ESS-148Msv	KW 0155	8	G1/4	7.8	8	29.3	26.0	4
ESS-1410Msv	KW 0156	10	G1/4	7.8	8	29.3	27.0	4

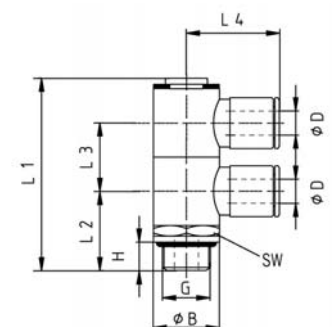
Application: for frequent swivelling



Double banjo elbow adaptor, male parallel thread with O-ring

Order Instructions		ØD	G	ØB	H	L1	L2	L3	L4	SW
Type	Order No.									
ZSS-184Msv	KW 0887	4	G1/8	13	6	44	19.0	15	21	14
ZSS-186Msv	KW 0888	6	G1/8	13	6	44	19.0	15	23	14
ZSS-188Msv	KW 0890	8	G1/8	13	6	44	19.0	15	24	14
ZSS-146Msv	KW 0889	6	G1/4	17	8	50	22.5	17	24	17
ZSS-148Msv	KW 0891	8	G1/4	17	8	50	22.5	17	26	17
ZSS-1410Msv	KW 0892	10	G1/4	17	8	50	22.5	17	27	17

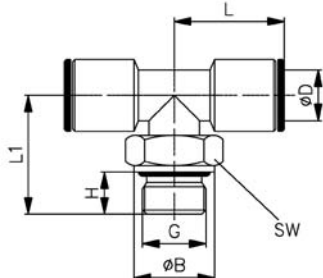
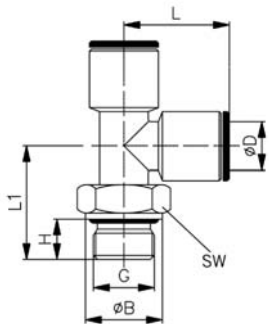
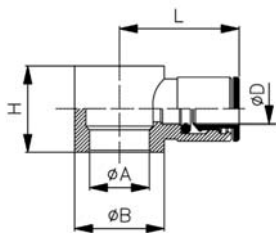
Application: for frequent swivelling



Dimensions in mm

Fittings and accessories

Metal push-in fittings



Banjo elbow body, for banjo bolt*

Order Instructions Type	Order No.	ØD	to banjo bolt	ØA	ØB	H	L
RES-54Msv	KW 0126	4	M5	5.0	SW9	9.0	19.0
RES-184Msv	KW 0127	4	G1/8	9.9	14	15.0	21.0
RES-55Msv	KW 0128	5	G1/8	5.0	SW9	9.0	19.0
RES-185Msv	KW 0129	5	G1/8	9.9	14	15.0	22.5
RES-186Msv	KW 0130	6	G1/8	9.9	14	15.0	23.0
RES-146Msv	KW 0131	6	G1/4	13.3	18	17.0	24.0
RES-188Msv	KW 0132	8	G1/4	9.9	14	15.0	24.5
RES-148Msv	KW 0133	8	G1/4	13.3	18	17.0	26.0
RES-388Msv	KW 0881	8	G3/8	16.6	21	20.0	28.0
RES-1410Msv	KW 0134	10	G1/4	13.3	18	17.0	27.0
RES-3810Msv	KW 0135	10	G3/8	16.6	21	20.0	29.0
RES-1412Msv	KW 0882	12	G1/4	13.3	18	17.0	28.0
RES-3812Msv	KW 0136	12	G3/8	16.6	21	20.0	30.0

Run tee adaptor, swivelling, male parallel thread with O-ring

Order Instructions Type	Order No.	ØD	G	ØB	H	L	L1	SW
WDS-184Msv	KW 0080	4	G1/8	13.0	6.0	17.5	18.5	13
WDS-186Msv	KW 0082	6	G1/8	13.0	6.0	22.0	20.0	13
WDS-146Msv	KW 0083	6	G1/4	16.0	8.0	22.0	24.0	13
WDS-188Msv	KW 0084	8	G1/8	13.0	6.0	24.0	20.0	13
WDS-148Msv	KW 0085	8	G1/4	16.0	8.0	24.0	24.0	13
WDS-1410Msv	KW 0086	10	G1/4	16.0	8.0	27.0	24.0	16
WDS-3810Msv	KW 0087	10	G3/8	20.0	9.0	27.0	28.0	16
WDS-3812Msv	KW 0088	12	G3/8	20.0	9.0	21.0	26.5	18

Branch tee adaptor, swivelling, male parallel thread with O-ring

Order Instructions Type	Order No.	ØD	G	ØB	H	L	L1	SW
TDS-186Msv	KW 0072	6	G1/8	13.0	6.0	21.0	20.0	13
TDS-146Msv	KW 0073	6	G1/4	16.0	8.0	21.0	24.0	13
TDS-188Msv	KW 0074	8	G1/8	13.0	6.0	24.0	20.0	13
TDS-148Msv	KW 0075	8	G1/4	16.0	8.0	24.0	24.0	13
TDS-388Msv	KW 0076	8	G3/8	20.0	9.0	24.0	25.5	16
TDS-1410Msv	KW 0077	10	G1/4	16.0	8.0	26.0	24.0	16
TDS-3810Msv	KW 0078	10	G3/8	20.0	9.0	26.0	28.0	16
TDS-3812Msv	KW 0079	12	G3/8	20.0	9.0	29.0	28.5	20
TDS-1214Msv	KW 0876	14	G1/2	25.0	11.0	32.0	33.5	20

For frequent swivelling, see Type TSS on page 65

* For banjo bolts see pages 96, 97

Dimensions in mm

Banjo tee adaptor, male parallel thread with O-ring

Order Instructions		ØD	G	ØA	H	L1	L	SW
Type	Order No.							
TSS-54Msv	KW 0157	4	M5	2.0	4	17.0	18.5	2
TSS-184Msv	KW 0158	4	G1/8	5.5	6	25.0	21.0	3
TSS-55Msv	KW 0159	5	M5	2.0	4	17.0	19.5	2
TSS-185Msv	KW 0160	5	G1/8	5.5	6	25.0	22.5	3
TSS-186Msv	KW 0161	6	G1/8	5.5	6	25.0	23.0	3
TSS-188Msv	KW 0163	8	G1/8	5.5	6	25.0	24.0	3
TSS-146Msv	KW 0162	6	G1/4	7.8	8	29.3	24.0	4
TSS-148Msv	KW 0164	8	G1/4	7.8	8	29.3	26.0	4
TSS-1410Msv	KW 0165	10	G1/4	7.8	8	29.3	27.0	4

Application: for frequent swivelling

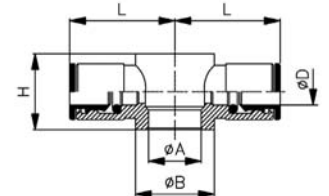
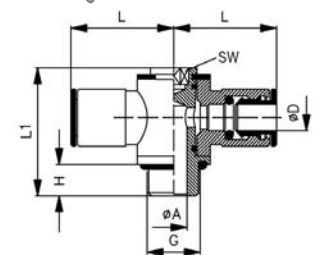
Banjo tee body, for banjo bolt*

Order Instructions		ØD	to banjo bolt	ØA	ØB	H	L
Type	Order No.						
RDS-54Msv	KW 0137	4	M5	5.0	8	9.0	18.5
RDS-184Msv	KW 0138	4	G1/8	9.9	14	15.0	21.0
RDS-55Msv	KW 0139	5	M5	5.0	7	9.5	19.5
RDS-185Msv	KW 0140	5	G1/8	9.9	14	15.0	22.5
RDS-186Msv	KW 0141	6	G1/8	9.9	14	15.0	23.0
RDS-146Msv	KW 0142	6	G1/4	13.3	18	17.0	24.0
RDS-188Msv	KW 0143	8	G1/8	9.9	14	15.0	24.5
RDS-148Msv	KW 0144	8	G1/4	13.3	18	17.0	26.0
RDS-388Msv	KW 0884	8	G3/8	16.6	21	20.0	28.0
RDS-1410Msv	KW 0145	10	G1/4	13.3	18	17.0	27.0
RDS-3810Msv	KW 0146	10	G3/8	16.6	21	20.0	29.0
RDS-3812Msv	KW 0147	12	G3/8	16.6	21	20.0	30.0

* For banjo bolts see pages 96, 97

Fittings and accessories

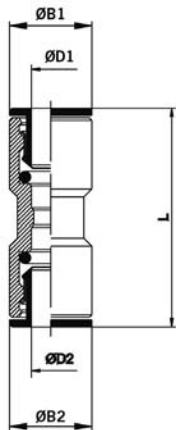
Metal push-in fittings



Dimensions in mm

Fittings and accessories

Metal push-in fittings

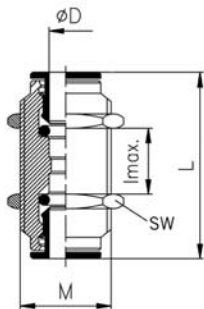


Straight connector

Order Instructions		ØD1	ØD2	NW	ØB1	L
Type	Order No.					
GVS-4Msv	KW 0023	4	4	3.0	9.0	30.0
GVS-5Msv	KW 0024	5	5	4.0	9.5	32.0
GVS-6Msv	KW 0025	6	6	5.0	11.0	31.5
GVS-8Msv	KW 0026	8	8	7.0	13.0	36.0
GVS-10Msv	KW 0027	10	10	9.0	15.0	37.0
GVS-12Msv	KW 0028	12	12	11.0	17.0	40.5
GVS-14Msv	KW 0029	14	14	12.0	20.0	45.0

Reducing straight connector

Order Instructions		ØD1	ØD2	NW	ØB1	ØB2	L
Type	Order No.						
GVSR-64Msv	KL5593	6	4	3.0	11	9	33.5
GVSR-86Msv	KL5594	8	6	5.0	13	11	37.0
GVSR-108Msv	KL5595	10	8	7.0	16	13	39.5
GVSR-1210Msv	KL5596	12	10	9.0	17	15	40.0
GVSR-1412Msv	KL5597	14	12	11.0	20	17	43.0



Straight bulkhead connector

Order Instructions		ØD	NW	M	I _{max}	L	SW
Type	Order No.						
SOS-4Msv	KW 0101	4	3.0	M10x1	8	32.0	13
SOS-5Msv	KW 0102	5	4.0	M11x1	8	33.0	14
SOS-6Msv	KW 0103	6	5.0	M14x1	8	33.5	17
SOS-8Msv	KW 0104	8	7.0	M16x1	10	37.0	18
SOS-10Msv	KW 0105	10	9.0	M17x1	12	39.5	20
SOS-12Msv	KW 0106	12	11.0	M20x1	17	42.0	24
SOS-14Msv	KW 0107	14	12.0	M22x1	18	45.0	25

Dimensions in mm

Fittings and accessories

Metal push-in fittings

Equal elbow connector

Order Instructions		ØD	ØC	ØB	L
Type	Order No.				
WS-4Msv	KW 0063	4	3.0	9.0	17.5
WS-5Msv	KW 0064	5	4.0	9.5	19.0
WS-6Msv	KW 0065	6	5.0	11.0	19.5
WS-8Msv	KW 0066	8	7.0	13.0	23.0
WS-10Msv	KW 0067	10	8.0	15.0	25.0
WS-12Msv	KW 0068	12	10.0	17.0	27.0
WS-14Msv	KW 0069	14	12.0	20.0	30.0

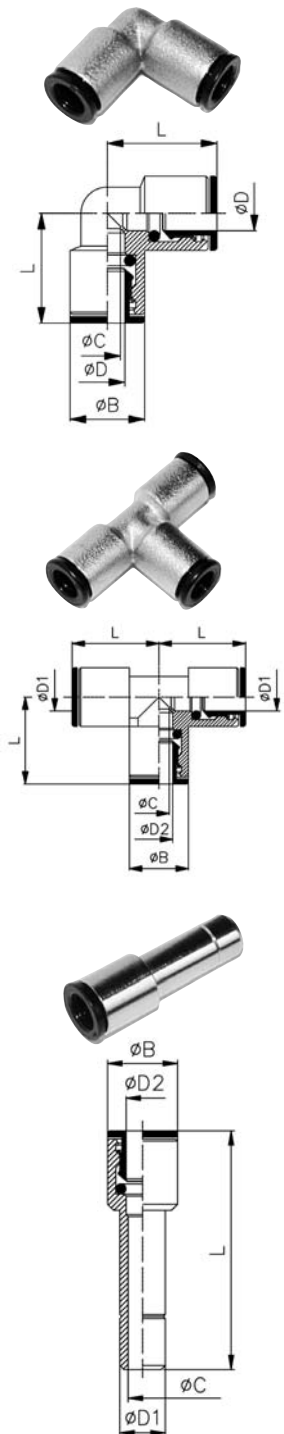
Equal tee connector

Order Instructions		ØD1	ØD2	ØC	ØB	L
Type	Order No.					
TVS-4Msv	KW 0089	4	4	3.0	9.0	17.5
TVS-5Msv	KW 0090	5	5	4.0	9.5	19.0
TVS-6Msv	KW 0091	6	6	5.0	11.0	19.5
TVS-8Msv	KW 0092	8	8	7.0	13.0	23.0
TVS-10Msv	KW 0093	10	10	8.0	15.0	25.0
TVS-12Msv	KW 0094	12	14	10.0	17.0	27.0
TVS-14Msv	KW 0095	14	14	12.0	20.0	30.0

Reducing straight stem connector

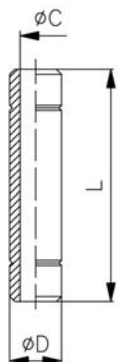
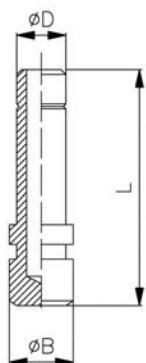
Order Instructions		ØD1	ØD2	ØC	ØB	L
Type	Order No.					
R-54Msv	KW 0108	5	4	3.0	9.0	32.5
R-64Msv	KW 0109	6	4	3.0	9.0	28.5
R-65Msv	KW 0111	6	5	4.0	9.5	35.5
R-84Msv	KW 0110	8	4	3.0	9.0	31.0
R-85Msv	KW 0112	8	5	4.0	9.5	32.5
R-86Msv	KW 0113	8	6	5.0	10.5	33.5
R-106Msv	KW 0114	10	6	5.0	10.5	36.5
R-108Msv	KW 0116	10	8	7.0	13.0	38.0
R-126Msv	KW 0115	12	6	5.0	13.0	39.5
R-128Msv	KW 0117	12	8	7.0	13.0	38.5
R-1210Msv	KW 0118	12	10	9.0	15.0	41.0
R-148Msv	KW 0834	14	8	7.0	15.0	43.0

Dimensions in mm



Fittings and accessories

Metal push-in fittings



Blanking Plug

Order Instructions Type	Order No.	$\varnothing D$	$\varnothing B$	L
VST-4Msv	KW 0119	4	5.0	25.5
VST-5Msv	KW 0120	5	6.0	26.5
VST-6Msv	KW 0121	6	7.0	27.5
VST-8Msv	KW 0122	8	9.0	30.5
VST-10Msv	KW 0123	10	11.0	35.0
VST-12Msv	KW 0124	12	13.0	37.0
VST-14Msv	KW 0125	14	15.0	40.0

Straight stem connector

Order Instructions Type	Order No.	$\varnothing D$	$\varnothing C$	L
VR-4	KW 0854	4	2.0	32.0
VR-5	KW 0855	5	3.0	33.0
VR-6	KW 0856	6	4.0	35.0
VR-8	KW 0857	8	6.0	38.0
VR-10	KW 0858	10	8.0	45.5
VR-12	KW 0859	12	10.0	48.0
VR-14	KW 0860	14	12.0	52.0