

**P1P Repair Kits**

Complete seal kits consist of:  
 Piston (complete)  
 Piston rod seal  
 O rings



Material specification, see page 5

**Order codes**

Cyl.bore mm	P1P cylinder version		
	Std temp	High temp	Low temp
20	<b>P1P-6HRN</b>	<b>P1P-6HRF</b>	<b>P1P-6HRL</b>
25	<b>P1P-6JRN</b>	<b>P1P-6JRF</b>	<b>P1P-6JRL</b>
32	<b>P1P-6KRN</b>	<b>P1P-6KRF</b>	<b>P1P-6KRL</b>
40	<b>P1P-6LRN</b>	<b>P1P-6LRF</b>	<b>P1P-6LRL</b>
50	<b>P1P-6MRN</b>	<b>P1P-6MRF</b>	<b>P1P-6MRL</b>
63	<b>P1P-6NRN</b>	<b>P1P-6NRF</b>	<b>P1P-6NRL</b>
80	<b>P1P-6PRN</b>	<b>P1P-6PRF</b>	<b>P1P-6PRL</b>
100	<b>P1P-6QRN</b>	<b>P1P-6QRF</b>	<b>P1P-6QRL</b>

**Order codes**

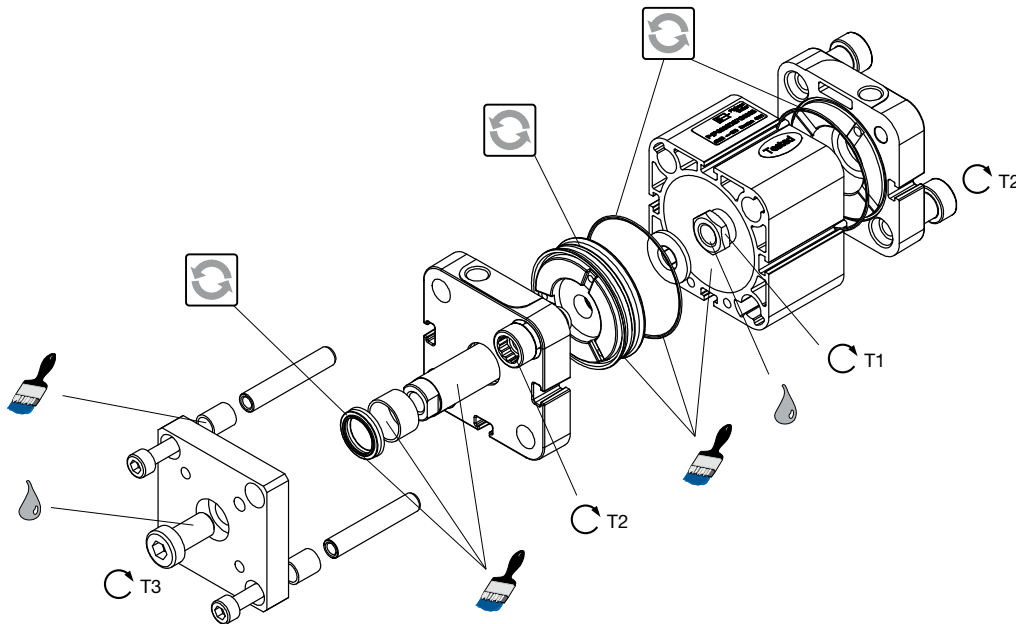


Standard temperature	30g	<b>9127394541</b>
High temperature	30g	<b>9127394521</b>
Low temperature	30g	<b>9127394541</b>

For through rods variants, order two seal kits.

**Example:** For a P1PS...KS Ø63 through rod, standard temperature version, order 2 x **P1P-6NRN**

**Seal kit**



= Included in seal kit     = Lubricated with grease

= Socket head     = Locking fluid

= Tightening torque     *Loctite 243 must be used for standard and low temperature versions.*  
*Loctite 270 must be used for high temperature versions*

Cyl.-dia mm	Plastic piston T1 Nm	AF mm	T2 Nm	AF mm	T3 Nm	AF mm
20	3,5	8	14	7	8	4
25	3,5	8	14	7	8	4
32	8	10	20	7	20	5
40	12	13	20	7	20	5
50	20	17	40	10	40	7
63	20	17	40	10	40	7
80	35	19	14	5	70	8
100	80	24	28	6	70	8