



Threshold Sensor Fittings

Parker Legris' threshold sensor fitting detects the pressure drop when a cylinder reaches the end of its stroke. They produce a pneumatic or electrical output signal when the pressure drop in the exhaust chamber of the cylinder goes below their back pressure threshold.

Product Features:

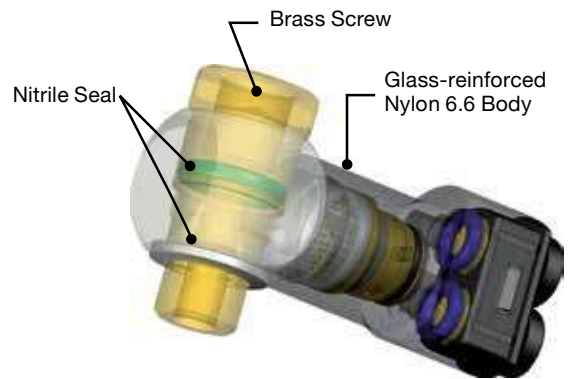
- Glass-reinforced nylon 6.6 body
- Brass screw
- NBR seal
- Silicone-Free

Markets:

- Factory/Process Automation
- Packaging
- Pneumatics
- Semi-Conductor

Applications:

- Robotics
- Packaging
- Textile
- Machine Tools
- Pneumatic Systems



Specifications:

Pressure Range 43.5 to 116 psi (3 to 8 bar)

Temperature Range 5° to 140° F (-15° to 60° C)

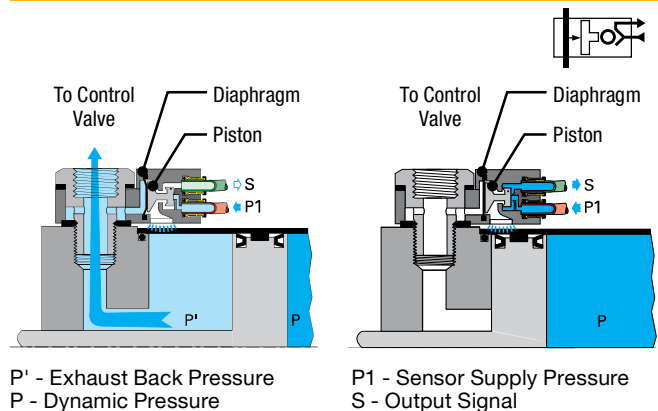
Breaking Pressure 8.5 psi

Response Time 3 ms

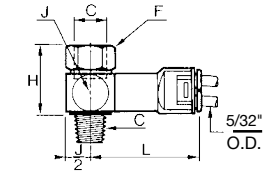
Compatible Tubing:

- Semi-Rigid Nylon
- Polyurethane 95 Durometer Shore A
- Fluoropolymer

Operation



7808 | **pneumatic threshold sensor** 5/32 tube pilot/signal ports to NPT or UNF

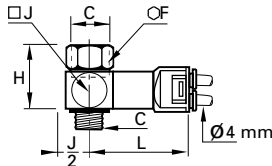


body: nylon
bolt: brass with sealing washer

C NPT/UNF	Part Number	orifice	F in	H in	J in	L in	oz
10-32	7818 04 20*	.08	5/16	.62	.43	1.70	.88
1/8	7808 04 11	.20	9/16	.90	.62	1.74	1.55
1/4	7808 04 14	.27	5/8	1.09	.76	1.81	2.51
3/8	7808 04 18	.39	7/8	1.13	.92	1.91	3.25
1/2	7808 04 22	.55	1	1.17	1.23	2.05	5.47

*10-32: bolt zinc passivated steel

7818 | **pneumatic threshold sensor** 4mm tube pilot/signal ports to BSPP or M5

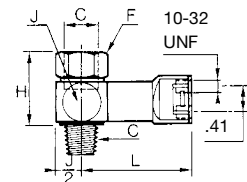


body: nylon
bolt: brass with sealing washer

C BSPP/M5	Part Number	DN min	F mm	H mm	J mm	L mm	kg
M5x0.8	7818 04 19*	2	8	16	11	43.5	.025
G1/8	7818 04 10	5	14	23	16	44.5	.082
G1/4	7818 04 13	7	17	28	19.5	46.5	.113
G3/8	7818 04 17	10	22	29	23.5	49	.128
G1/2	7818 04 21	14	27	30	31.5	52.5	.159

*M5: bolt zinc passivated steel

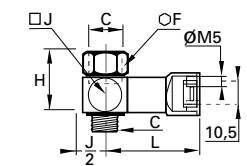
7808 | **pneumatic threshold sensor** 10-32 UNF pilot/signal ports to NPT



body: nylon
bolt: brass with sealing washer

C NPT	Part Number	orifice	F in	H in	J in	L in	oz
1/8	7808 20 11	.20	9/16	.90	.62	1.58	1.66
1/4	7808 20 14	.27	5/8	1.09	.76	1.66	2.61
3/8	7808 20 18	.39	7/8	1.13	.92	1.76	3.46

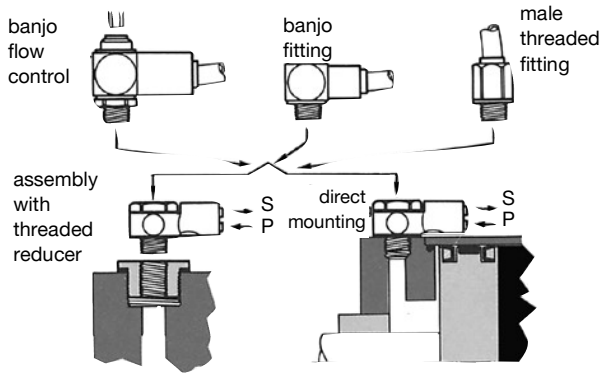
7818 | **pneumatic threshold sensor** M5 pilot/signal ports to BSPP



body: nylon
bolt: brass with sealing washer

C BSPP	Part Number	DN min	F mm	H mm	J mm	L mm	kg
G1/8	7818 19 10	5	14	23	16	40.5	.087
G1/4	7818 19 13	7	17	28	19.5	42.5	.117

Assembly on Cylinder



Pneumatic/Electric Sensors

Exhaust pressure is sensed by a N/O, N/C contact relay switch.

Pneumatic/Electric Threshold valves are ideally suited to turn on or off a light, or to send an electric signal to another function in the system. They are supplied with a 6 ft., three core cable and can be used with AC or DC voltages.

Advantages for the user:

- small size
- replaces traditional sequence valves and/or limit switches
- eliminates on going normal adjustment associated with limit valves

Installation

The threshold sensor can be mounted on the cylinder, on the control valve or on a terminal block provided it is between the cylinder and the flow control. For accuracy, the flow control is mounted as close as possible to the cylinder. It can be fitted to a sensor fitting mounted on the cylinder.

Technical Specifications for Pneumatic/Electric Threshold Sensor Valves

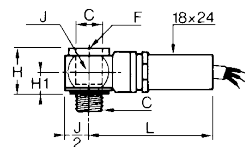
Threshold Signal Pressure	7 psi
Current Rating	5A/250VAC - 5W/48VDC
UL Listed Component Reset Pressure	10 psi

Electrical Connection

cable: three core,
2 meters (6.5 ft) long



7828/7829 | pneumatic/electric threshold sensor NPT or UNF

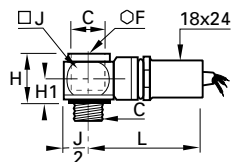


body: nylon
bolt: brass with sealing washer



C NPT/UNF	Part Number	F mm	H in	H1 in	J in	L in	oz
10-32	7828 00 20	8	.79	.39	.43	1.93	5.30
1/8	7829 00 11	6	.79	.39	.63	2.05	6.10
1/4	7829 00 14	8	.79	.39	.83	2.13	6.35
3/8	7829 00 18	10	.87	.47	1.10	2.24	7.50
1/2	7829 00 22	12	1.02	.55	1.30	2.28	9.35

7828 | pneumatic/electric threshold sensor BSPP or M5



body: nylon
bolt: brass with sealing washer



C BSPP/M5	Part Number	F mm	H mm	H1 mm	J mm	L mm	kg
M5x0.8	7828 00 19	8	20	10	11	49	.115
G1/8	7828 00 10	6	20	10	16	52	.120
G1/4	7828 00 13	8	20	10	21	54	.125
G3/8	7828 00 17	10	22	12	28	57	.150
G1/2	7828 00 21	12	26	14	33	58	.185