

















# Accessories for Electric Linear Drives Series OSP-E

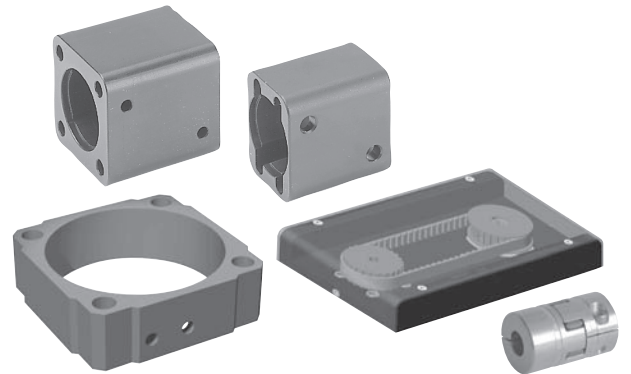
Description	Illustration	Data Sheet	Page
Motor Mounting (Coupling housing, motor flange, motor coupling)		1.44.006E-2 to -7	120-125
Belt Gear		1.44.006E-8	126
End Cap Mountings, Standard End Cap Mountings for OSP-E with guides		1.44.010E-2, -3, -4, -5 1.44.014E-2, -3	128-131 144, 145
Flange Mountings C		1.44.010E-6	132
Profile Mounting for Multi-Axis systems		1.44.010E-7	133
Mid-Section Support, Standard Mid-Section Support for OSP-E with guides		1.44.010E-8, -9 1.44.014E-2, -4	134, 135 146
Profile connections (Adaptor Profile, T-nut Profile, Connection Profile)		1.44.010E-10, -11, -12	136-138
Trunnion Mounting EN Pivot Mounting EL		1.44.010E-13	139
Clevis Mounting		1.44.010E-14, -15	140, 141
Inversion Mounting		1.44.010E-16	142
Piston Rod Eye		1.44.018E-2	148
Piston Rod Clevis		1.44.018E-2	148
Piston Rod Compensating Coupling		1.44.018E-3	149
Magnetic Switches		1.44.030E	153 - 156
SFI-plus Displacement Measuring System		1.44.035E	157-159
Cable Cover		1.44.040E	161

The right to introduce technical modifications is reserved



# Accessories for Electric Linear Drives Series OSP-E

## Motor Mountings



### Contents

Description	Data Sheet	Page
Coupling housing (OSP-E..BHD)	1.44.006E-2	120
Motor flanges (OSP-E..BHD)	1.44.006E-2	120
Coupling housing (OSP-E..BV)	1.44.006E-3	121
Motor flanges (OSP-E..BV)	1.44.006E-3	121
Coupling housing (OSP-E..B)	1.44.006E-4	122
Motor flanges (OSP-E..B)	1.44.006E-4	122
Motor Coupling (OSP-E..B)	1.44.006E-4	122
Coupling housing (OSP-E..SB, ..ST, ..SBR, ..STR)	1.44.006E-5	123
Motor flanges (OSP-E..SB, ..ST, ..SBR, ..STR)	1.44.006E-5	123
Motor Coupling (OSP-E..SB, ..ST, ..SBR, ..STR)	1.44.006E-5	123
Motor flanges for freely selectable mounting dimensions (OSP-E..B, ..SB, ..ST, ..SBR, ..STR)	1.44.006E-6, -7	124, 125
Belt Gear for freely selectable mounting dimensions (OSP-E..B, ..SB, ..ST, ..SBR, ..STR)	1.44.006E-7	126

The right to introduce technical modifications is reserved

# Coupling Housing Motor Flange

Size 20, 25, 32, 50



- Series OSP-E..BHD  
Linear Drive with toothed belt and integrated guide

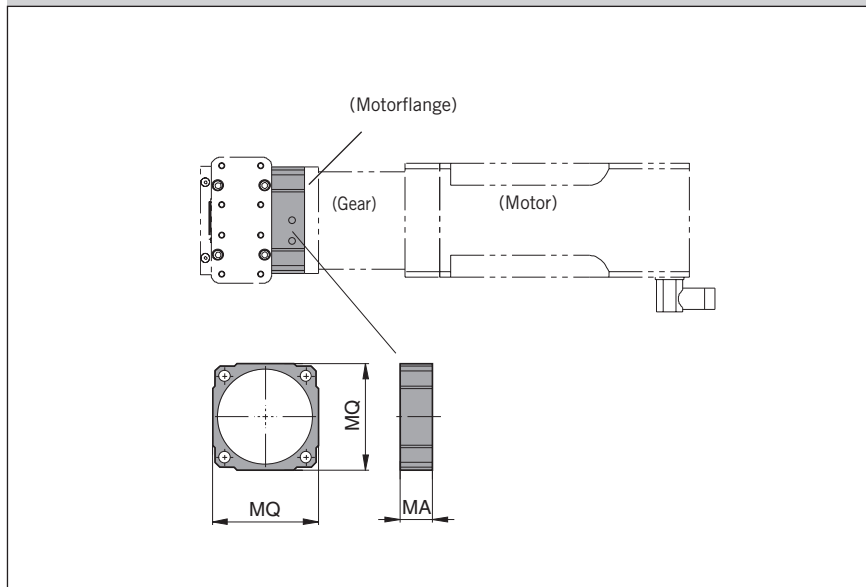
Via the coupling housing the gear or the motor can be fitted directly to the drive and the drive shafts by means of a motor flange.



The motor flange matches the above mentioned coupling housing and has been reworked to match the respective type of motor.

Motor flanges for the available range of gears, servo and stepper motors are included in the respective data sheet, including technical data and dimensions. Please refer to the respective catalogues.

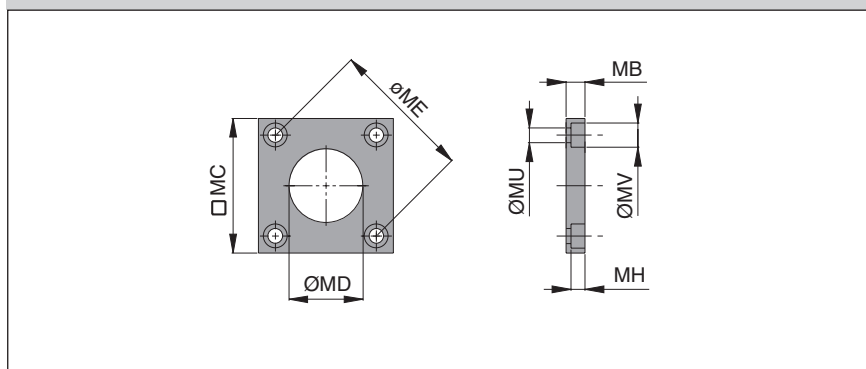
## Coupling Housing (for gear or motor mounting)



## Dimension Table [mm] and Order Instructions

Series	Description	MA	MQ	Order No.
OSP-E20BHD	Coupling Housing	19	60	16215
OSP-E20BHD	Motor Flange LP050	–	–	16224
OSP-E25BHD	Coupling Housing	22	76	12300
OSP-E25BHD	Motor Flange LP070	–	–	12311
OSP-E32BHD	Coupling Housing	30	98	12301
OSP-E32BHD	Motor Flange LP090	–	–	12312
OSP-E50BHD	Coupling Housing	41	128	12302
OSP-E50BHD	Motor Flange LP120	–	–	12313

## Motor Flange (semi-finished)



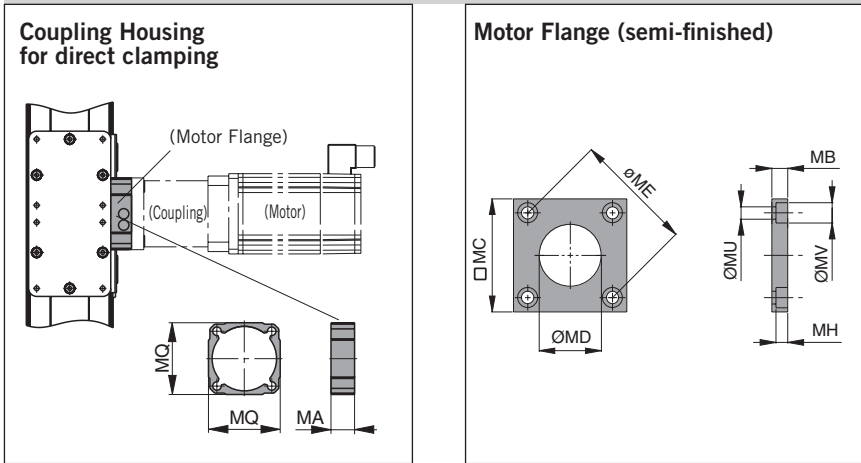
## Dimension Table [mm] and Order Instructions

Series	MB	MC	MD	ME	MH	MU	MV	Order No.
OSP-E20BHD	10	75	25	65.8	6.8	6.6	11	16216
OSP-E25BHD	14	90	36	82	8.5	9	15	12308
OSP-E32BHD	14	100	55	106	10.5	11	18	12309
OSP-E50BHD	18	125	77	144	12.5	13.5	20	12310

For Linear Drives see 1.15.002E

Data Sheet No. 1.44.006E-2

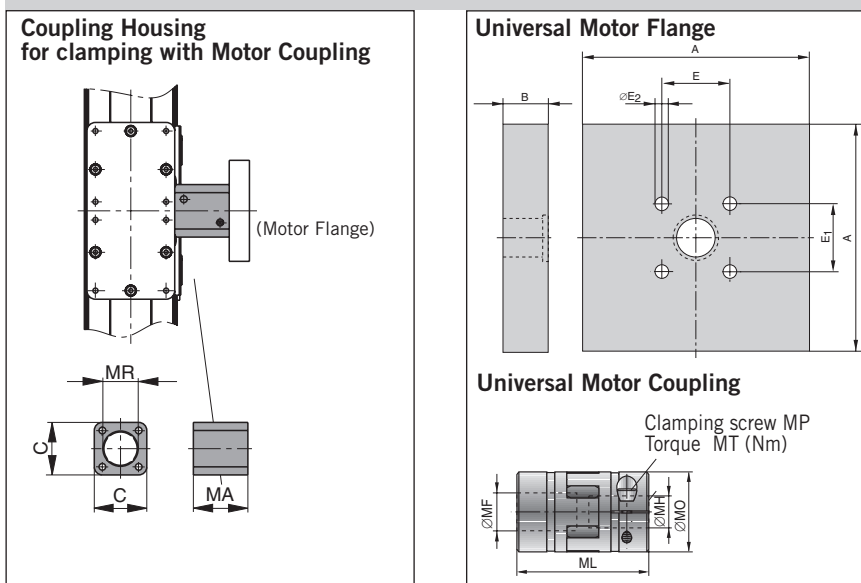
Motor Mountings for OSP-E..BV with drive shaft, clamping hub, version 2-5<sup>1)</sup>



Dimension Table [mm] and Order Instructions

Series	Description	MA	MB	MC	MD	ME	MH	MQ	MU	MV	Order-No.
OSP-E20BV	Coupling Housing	19	-	-	-	-	-	60	-	-	16215
OSP-E20BV	Motor flange semi-finished	-	10	75	25	65,8	6,8	-	6,6	11	16216
OSP-E20BV	Motor flange LPO50	-	-	-	-	-	-	-	-	-	16224
OSP-E25BV	Coupling Housing	22	-	-	-	-	-	76	-	-	12300
OSP-E25BV	Motor flange semi-finished	-	14	90	36	82	8,5	-	9	15	12308
OSP-E25BV	Motor flange LPO70	-	-	-	-	-	-	-	-	-	12311

Motor Mountings for OSP-E..BV with drive shaft and tenon, version A-D<sup>1)</sup>



Dimension Table [mm] and Order Instructions

Series	Description	A	B	C	E	E <sub>1</sub>	E <sub>2</sub>	MA	MR	Order-No.
OSP-E20BV	Coupling Housing	-	-	60	-	-	-	79	46,5	16269
OSP-E20BV	Universal-Motor Flange	120	15	-	46,5	46,5	6,6	-	-	16267
OSP-E25BV	Coupling Housing	-	-	87	-	-	-	84	48	20139
OSP-E25BV	Universal-Motor Flange	120	15	-	46	46	6,6	-	-	12069

Dimension Table [mm] and Order Instructions for Universal Motor Coupling

Series	MF	ML	MH	MO	MT [Nm]	Order-No.
OSP-E20BV	12 <sup>H7</sup>	66	9,5 <sup>H7</sup>	40	10,5	16268
OSP-E25BV	16 <sup>H7</sup>	66	9,5 <sup>H7</sup>	40	10,5	10845

Data Sheet No.1.44.006E-3

# Coupling Housing

## Motor Flange

## Motor Coupling

Size 20, 25



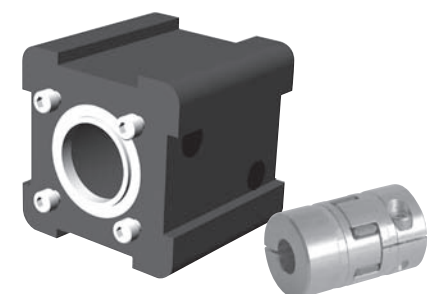
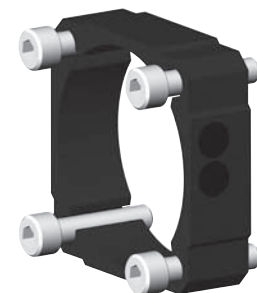
- Series OSP-E..BV Vertical Linear Drive with toothed belt and integrated recirculating ball bearing guide

The coupling housing with suitable motor flange allows proper connection between the drive shaft of the linear drive and the gear shaft or motor shaft. The gear or motor can either be fitted to the linear drive directly or indirectly.

If a Parker Origa gear is used, direct clamping of the gear shaft into to the drive shaft with clamping hub. As an alternative the gear or motor can be fitted to the linear drive via a motor coupling.

<sup>1)</sup> Hint:

when selecting the type of motor mounting please observe the respective drive shaft versions in accordance with the ordering code of the linear drive (data sheet 1.20.016E-6).



# Coupling Housing Motor Flange Motor Coupling

Size 25, 32, 50

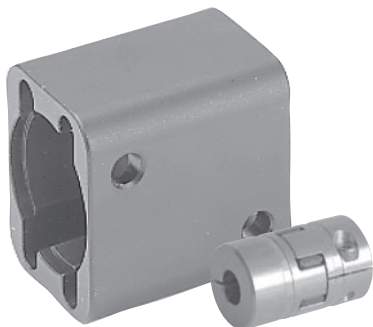


## • Series OSP-E..B Linear Drive with Belt

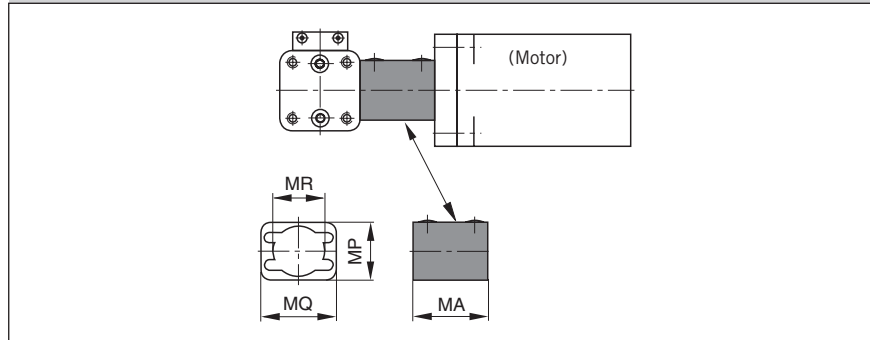
The coupling housing with suitable motor flange allows easy and inherently stable connection of the gear or the motor to the linear drive.

### Hint:

Let us know the mounting dimensions of your motor. Upon request we will be pleased to check and manufacture a motor flange that will come up to your individual needs.  
(Also see "motor flange for freely selectable mounting dimensions" data sheet 1.44.006E-6)



## Coupling Housing (for gear or motor mounting)

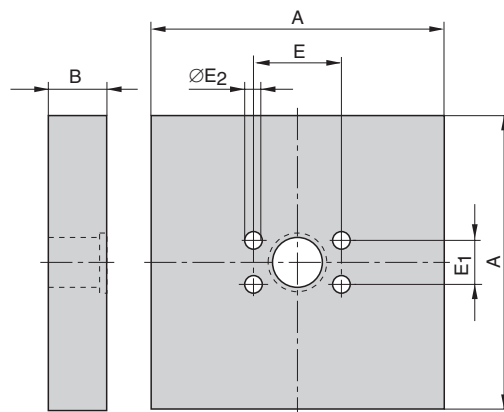


## Dimension Table [mm] and Order Instructions

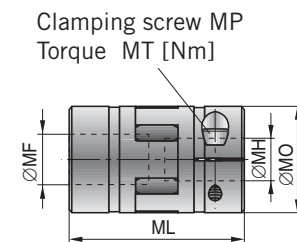
Series	Typ	MA	MP	MQ	MR	Order No.
OSP-E25B	250	47	30	40	25	20606
OSP-E32B	320	49	38	49	33	20607
OSP-E50B	500	76	54	65	48	20608

## Universal Motor Flange and Motor Coupling

### Universal Motor Flange



### Universal Motor Coupling



## Dimension Table [mm] and Order Instructions für Universal Motor Flange

Series	A	B	E	E <sub>1</sub>	E <sub>2</sub>	Order No.
OSP-E25B	100	20	30	15	5.5	12050
OSP-E32B	100	20	38	18	6.6	12053
OSP-E50B	120	15	50	32	9.0	12056

## Dimension Table [mm] and Order Instructions für Universal Motor Coupling

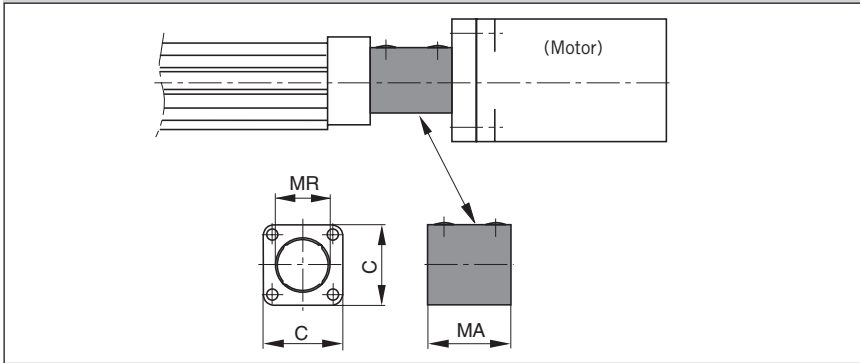
Series	MF <sup>H7</sup>	ML	MH <sup>H7</sup> *	MO	MT [Nm]	Order No.
OSP-E25B	10	30	4	20	0.76	15231
OSP-E32B	10	35	6	30	1.34	15197
OSP-E50B	16	66	9.5	40	10.5	10845

\* can be bored out to motor shaft diameter by customer.  
Other dimensions on request

For **Linear Drive** see Data Sheet 1.20.002E, 1.25.002E

Data Sheet No.1.44.006E-4

### Coupling Housing (for motor)

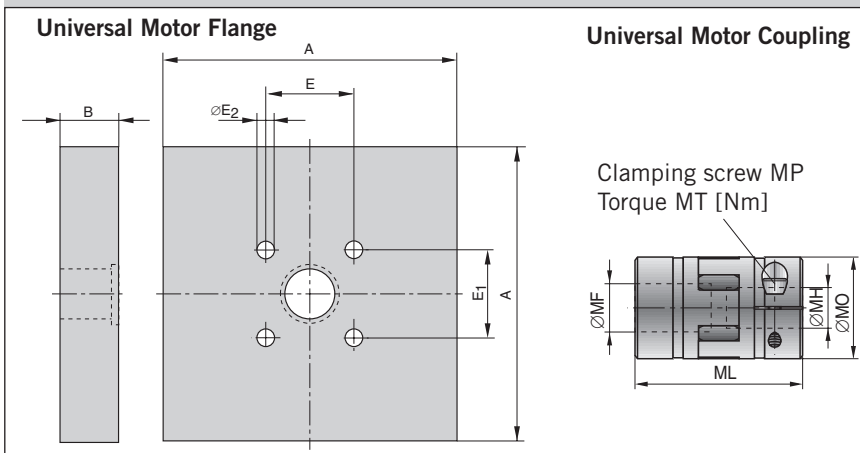


### Dimension Table [mm] and Order Instructions

Series	Typ	MA	C	MR	Order No.
OSP-E25*	251	38	41	25	20137
OSP-E32*	321	54	52	33	20138
OSP-E50*	501	84	87	48	20139

\* ..SB, ..ST, ..SBR, ..STR

### Universal Motor Flange and Motor Coupling



### Dimension Table [mm] and Order Instructions for Universal Motor Flange

Series	A	B	E	E <sub>1</sub>	E <sub>2</sub>	Order No.
OSP-E25*	100	20	27	27	5.5	12060
OSP-E32*	100	20	36	36	6.6	12064
OSP-E50*	120	15	46	46	6.6	12069

\* ..SB, ..ST, ..SBR, ..STR

### Dimension Table [mm] and Order Instructions for Universal Motor Coupling

Series	MF <sup>H7</sup>	ML	MH <sup>H7</sup> **	MO	MT [Nm]	Order No.
OSP-E25*	6	30	6	20	0.76	12073
OSP-E32*	10	35	6	30	1.34	15197
OSP-E50*	15	66	9.5	40	10.5	12079

\* ..SB, ..ST, ..SBR, ..STR

\*\* can be bored out to motor shaft diameter by customer. Other dimensions on request.

For **Linear Drives** see 1.30.00E2, 1.35.002E, 1.35.011E

# Coupling Housing Motor Flange Motor Coupling

Size 25, 32, 50



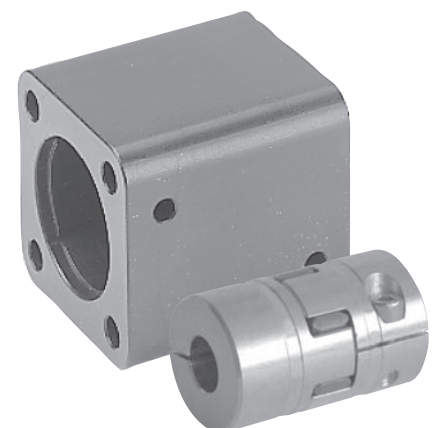
- Series  
OSP-E..SB, ..ST, ..SBR, ..STR  
Linear Drive with Screw

The coupling housing with suitable motor flange allows easy and inherently stable connection of the gear or the motor to the linear drive.

#### Hint:

Let us know the mounting dimensions of your motor. Upon request we will be pleased to check and manufacture a motor flange that will come up to your individual needs.

(Also see "motor flange for freely selectable mounting dimensions" data sheet 1.44.006E-6)



# Motor Flange

for freely selectable mounting dimensions

Size 25, 32, 50



• Series OSP-E..B  
Linear Drive with Belt

• OSP-E..SB, ..ST, ..SBR, ..STR  
Linear Drive with Screw

The motor flange for motors with freely selectable mounting dimensions offers flexible possibilities to connect most different types of motors to the electric linear drives OSP-E. The drive shafts of linear drive and motor are connected with a motor coupling in the coupling housing and the motor flange is centred.

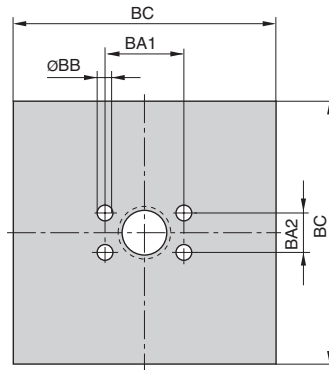
## Hint

Please check the following data for the connection of the motor to the freely selectable motor flange and state when ordering:

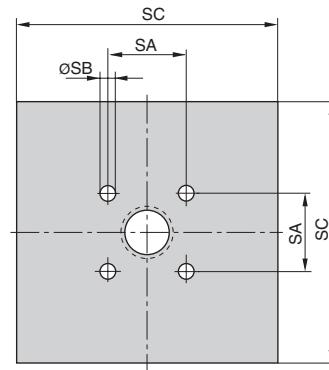
1. mounting angle  $W$  of the motor
2. bore hole version  $B$  as thread  $M$  or counterbore  $S$
3. pitch circle diameter  $A$  as a function of  $M$  or  $S$
4. Diameter of centring spigot
5. Length of motor shaft  $G$

## Flange version

### Belt drive



### Screw drive



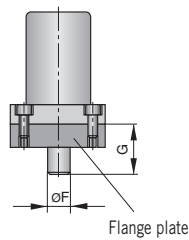
## Dimension Table [mm] and Order Instructions

Size	BA1	BA2	ØBB	BC	SA	ØSB	SC	Order No.
25	30	15	5.5	100	27	5.5	100	Motor Flange
32	38	18	6.6	100	36	6.6	100	Motor Flange
50	50	32	9.0	120	46	6.6	120	Motor Flange

## Variable Dimensions for Flange

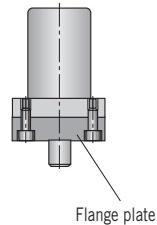
### Version Thread „M“

Flange plate with thread,  
Motor flange with through bolt

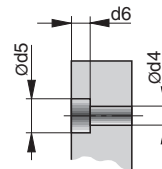


### Version Counterbore „S“

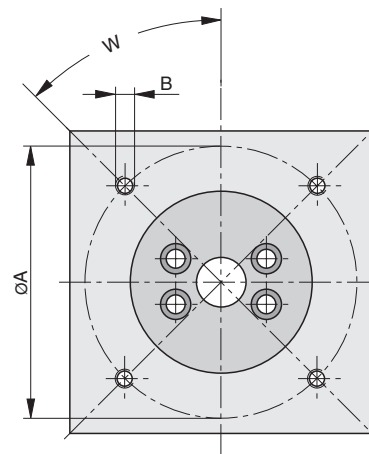
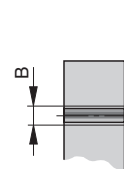
Flange plate with through bore  
Motor flange with thread



### Version Counterbore „S“

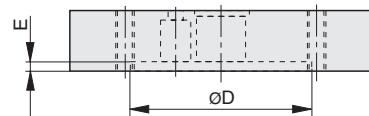


### Version Thread „M“



### Counterbore Dimensions [mm]

ScREW Size	B	Ø d4	Ø d5	d6
M4x16	4.5	8	4.6	
M5x22	5.5	10	5.7	
M6x20	6.6	11	6.8	
M8x25	9	15	9	
M10x25	11	18	11	





Dimension table of the variable dimensions [mm] – Version for Belt drive							
W	45 °			90 °			
Size	25	32	50	25	32	50	
A	min. Vers. S	48 + Ød5	60 + Ød5	80 + Ød5	40 + Ød5	49 + Ød5	65 + Ød5
	max. Vers. S	135 - Ød5	135 - Ød5	160 - Ød5	100 - Ød5	100 - Ød5	120 - Ød5
	min. Vers. M	45 + B	55 + B	75 + B	40 + B	48 + B	50 + B
	max. Vers. M	135 - B	135 - B	160 - B	96 - B	96 - B	116 - B
B	max.	M10			M10		
D	min.	20	30	40	20	30	40
	max.	98	98	118	85	85	105
G	min.	18	21	32	18	21	32
	max.	33	35	45	33	35	45

Dimension table of the variable dimensions [mm] – Version for Screw drive							
W	45 °			90 °			
Size	25	32	50	25	32	50	
A	min. Vers. S	58 + Ød5	74 + Ød5	123 + Ød5	41 + Ød5	52 + Ød5	87 + Ød5
	max. Vers. S	135 - Ød5	135 - Ød5	160 - Ød5	100 - Ød5	100 - Ød5	120 - Ød5
	min. Vers. M	525 + B	68 + B	82 + B	30 + B	40 + B	50 + B
	max. Vers. M	135 - B	135 - B	160 - B	96 - B	96 - B	116 - B
B	max.	M10			M10		
D	min.	20	30	40	20	30	40
	max.	98	98	118	85	85	105
G	min.	18	21	32	18	210	32
	max.	33	35	45	33	35	45

#### Legend

- W [°] = Angle of fastening boreholes  
A [mm] = Pitch circle diameter  
B = Thread size of fastening screw  
(version: M = thread, S = counterbore)  
D [mm] = Diameter of centring spigot  
E [mm] = Depth of centring spigot  
F [mm] = Diameter of motor shaft  
G [mm] = Length of motor shaft

# Belt Gear

for freely selectable mounting dimensions

Size 25, 32, 50



• Series OSP-E..SB, ..ST, ..SBR, ..STR  
Linear Drive with Screw

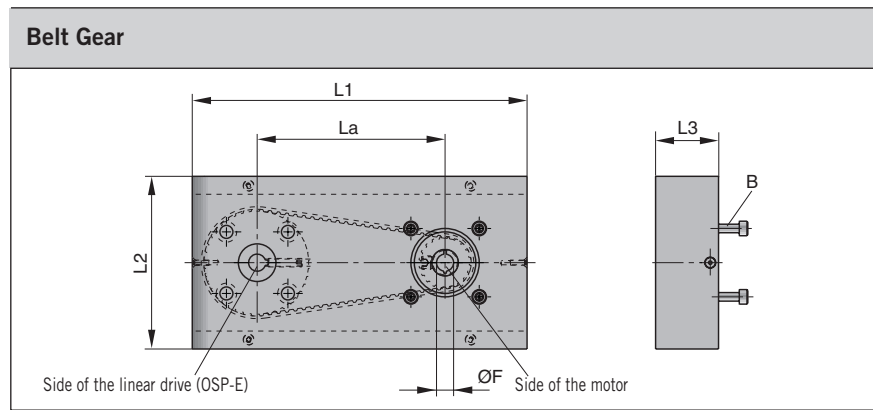
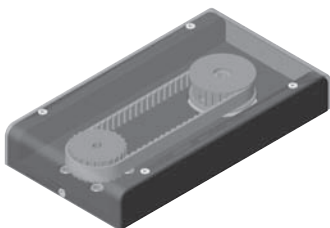
The toothed belt gear with its freely selectable mounting dimensions offers the possibility to fit most different types of motors to the linear drive parallel to the motor axis. After the flange dimensions of the motor had been checked, the mounting side of the motor will be prepared for the individual demands of the customer.

When ordering please observe the version of the drive shaft of the linear drive OSP-E with spindle. This version can either be ordered with plain shaft or plain shaft with keyway (Option). (If the version keyway is selected, the delivery period may be elongated.)

Ausführungen der Antriebswelle OSP-E with Screw	
Order no.	Drive shaft
OSP-E..*... ..0-.....	Plain
OSP-E..*... ..3-.....	Key way
OSP-E..*... ..4-.....	Key way, long
*1=SB, 2=ST, 3=STR, 4=SBR	

Max. allowed Moments M [Nm] for Belt Gear		
Size	Transmission ratio	
	1:1	2:1
25	5	5
32	10	10
50	20	20

Beware of the max. allowed moments of the corresponding linear drive.

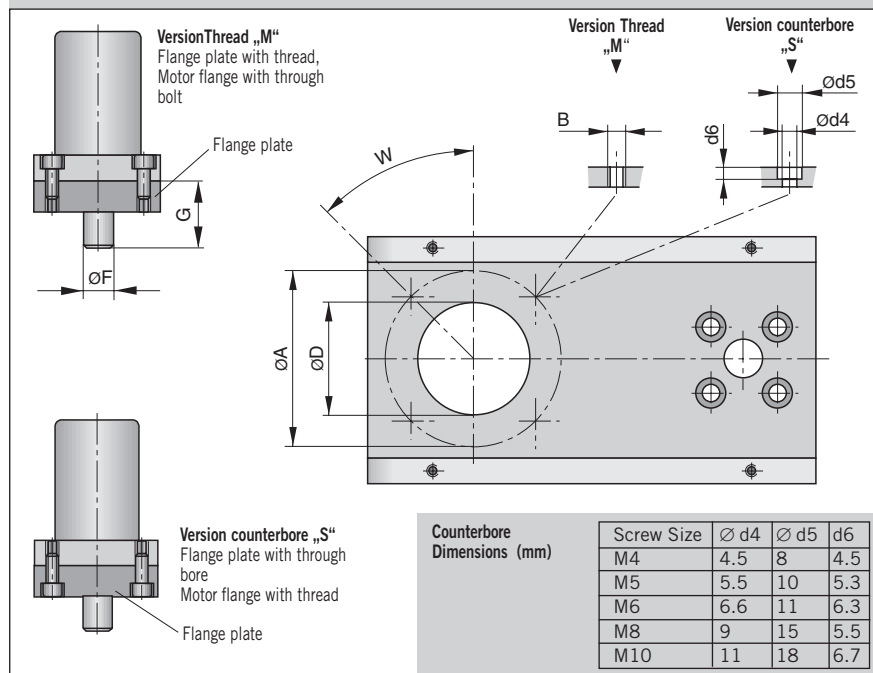


Dimension Table [mm] and Order Instructions

Series	L1	L2	L3	La		B	Ø F*	Order No.
				1:1	2:1			
OSP-E25	186	101	30	110	109.3	M4 – M10	6, 7, 8, 9, 10, 11	15576
OSP-E32	196	101	37	110	111.4		8, 9, 10, 11, 12, 14	15576
OSP-E50	234	101	50	135	133.7		12, 14, 16, 19	15576

\* other diameters on request

## Variable Dimensions for Motor Mounting



Dimension table of the variable dimensions [mm]

W	45 °			90 °		
	25	32	50	25	32	50
Size						
A min.	30			30		
max. Vers. S	110 - Ød5			70 - Ød5	70 - Ød5	80 - Ød5
max. Vers. M	110 - Ød4			70 - Ød4	70 - Ød4	80 - Ød4
B max.	M 8			M 8		
D min.	20			20		
max.	80	80	100	60	60	70
G min.	16	20	30	16	20	30
max.	23	30	40	23	30	40
ØF [mm]	6, 7, 8, 9, 10, 11	8, 9, 10, 11, 12, 14	12, 14, 16, 19	6, 7, 8, 9, 10, 11	8, 9, 10, 11, 12, 14	12, 14, 16, 19

# Accessories for Electric Linear Drives Series OSP-E

## Mountings, Sensors



### Contents

Description	Data Sheet	Page
End Cap Mounting (OSP-E..BHD)	1.44.010E-2 ,3	128, 129
End Cap Mounting (OSP-E..B, ..SB, ..ST)	1.44.010E-4	130
End Cap Mounting (OSP-E..SBR, ..STR)	1.44.010E-5	131
Flange Mounting C (OSP-E..SBR, ..STR)	1.44.010E-6	132
Profile Mounting for Multi-Axis systems (OSP-E..)	1.44.010E-7	133
Mid-Section Support (OSP-E..BHD)	1.44.010E-8	134
Mid-Section Support (OSP-E..)	1.44.010E-9	135
Adaptor Profile (OSP-E..)	1.44.010E-10	136
T-Nut Profile (OSP-E..)	1.44.010E-11	137
Connection Profile (OSP-E..)	1.44.010E-12	138
Trunnion Mounting EN (OSP-E..SBR, ..STR)	1.44.010E-13	139
Pivot Mounting EL (OSP-E..SBR, ..STR)	1.44.010E-13	139
Clevis Mounting (OSP-E..B, ..SB, ..ST)	1.44.010E-14	140
Clevis Mounting, low backlash (OSP-E..B, ..SB, ..ST)	1.44.010E-15	141
Inversion Mounting (OSP-E..B, ..SB, ..ST)	1.44.010E-16	142

The right to introduce technical modifications is reserved

# End Cap Mounting

Size 20, 25, 32, 50



- Series OSP-E..BHD  
For Linear Drive with Toothed Belt  
and integrated Guides

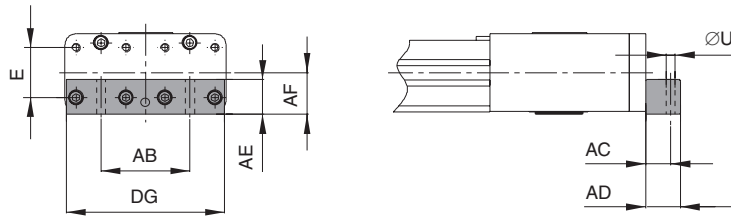
On the end-face of each end cap there are eight threaded holes for mounting the actuator.

Material:  
Anodized aluminium.

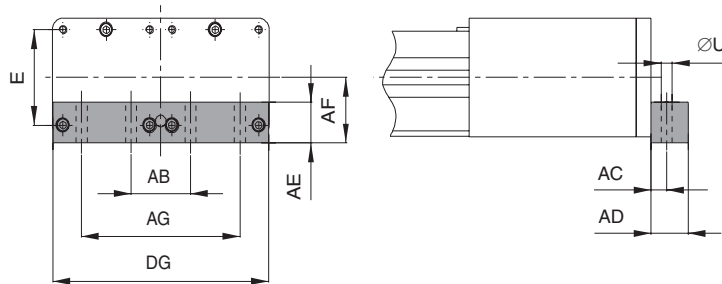
The mountings are supplied in pairs.



## Series OSP-E20BHD to E32BHD: Type CN-20, CN-25, CN-32



## Series OSP-E50BHD: Type C50

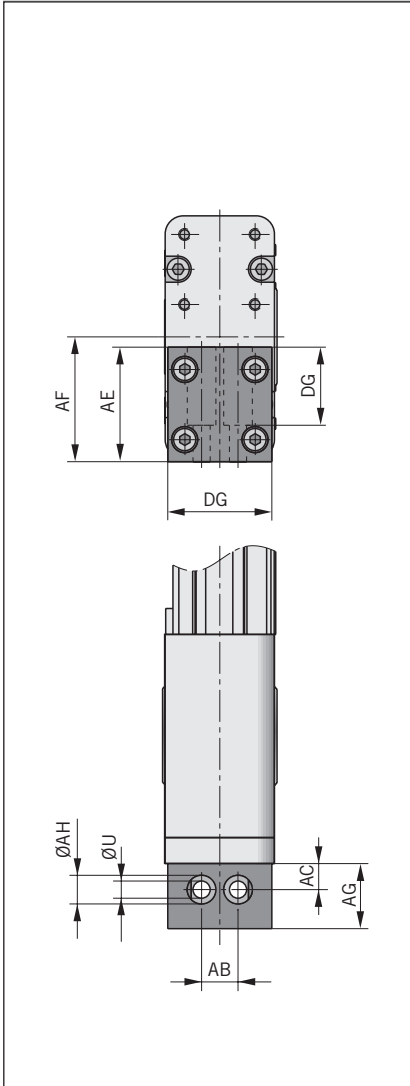


### Dimension Table [mm] and Order Instructions

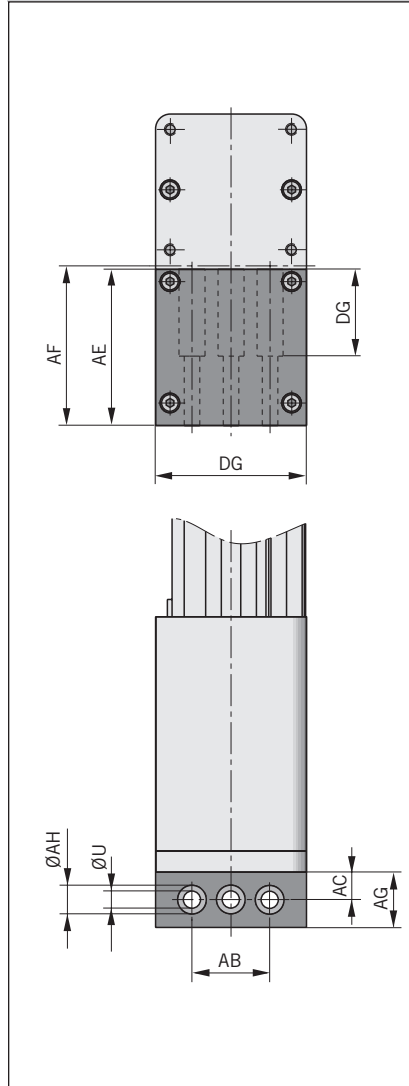
Series	Type	E	ØU	AB	AC	AD	AE	AF	AG	DG	Order No. *)
OSP-E20BHD	CN-20	27	6,6	40	10	20	20	22	-	74	16213
OSP-E25BHD	CN-25	27	6,6	52	16	25	25	22	-	91	12266
OSP-E32BHD	CN-32	36	9	64	18	25	25	30	-	114	12267
OSP-E50BHD	CN-50	70	9	48	12,5	30	30	48	128	174	12268

\*) = Pair

**Series OSP-E20BHD to E32BHD:  
Type CO-20, CO-25, CO-32**



**Series OSP-E50BHD:  
Type CO-50**



# End Cap Mounting

Size 20, 25, 32, 50



- Series OSP-E..BHD Linear Drive with Belt and Integrated Guide

On the end-face of each end cap there are eight threaded holes each for mounting the actuator.

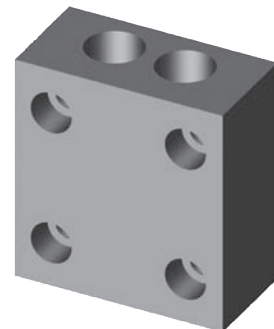
Material:  
Anodized aluminium.

The mountings are supplied in pairs.

**Dimension Table [mm] and Order Instructions**

Series	Type	ØU	AB	AC	AD	AE	AF	AG	ØAH	DG	Order No. *)
OSP-E20BHD	CO-20	6,6	18	15	22	42	45	39	11	40	16241
OSP-E25BHD	CO-25	6,6	14	10	25	44	48	30	11	40	16245
OSP-E32BHD	CO-32	9	19	12	28	60	62	42	15	56	16246
OSP-E50BHD	CO-50	9	45	16	32	90	92	50	15	87	16247

\*) = Pair



# End Cap Mounting

Size 25, 32, 50



- Series OSP-E..SBR, ..STR  
Linear Drive with Screw  
and extending rod

On the end-face of each end cap there are four threaded holes for mounting the actuator.

The hole layout is square, so that the mounting can be fitted to the bottom, top or either side.

Material:

Series OSP-25 to 32:

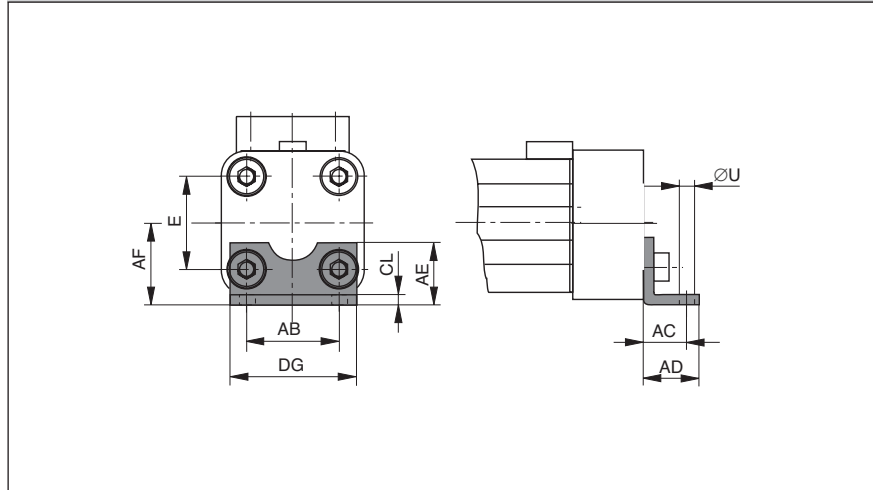
Galvanised steel.

Series OSP-50:

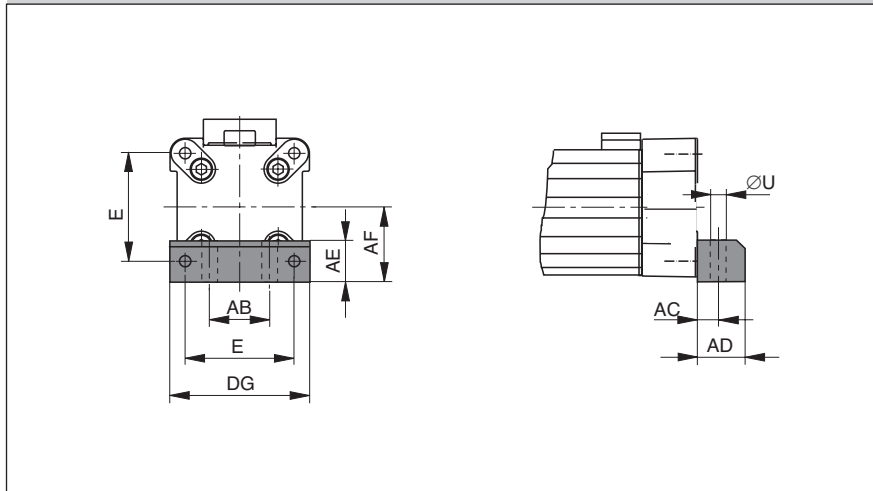
Anodized aluminium.

The mountings are supplied as pairs

## Series OSP-E25 to E32: Type A1



## Series OSP-E50: Type C1



## Dimension Table [mm] and Order Instruction

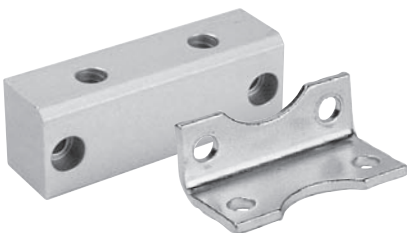
Series	E	ØU	AB	AC	AD	AE	AF	CL	DG	Order No. *)	
										Typ A1	Typ C1
OSP-E25	27	5,8	27	16	22	18	22	2,5	39	2010	–
OSP-E32	36	6,6	36	18	26	20	30	3	50	3010	–
OSP-E50	70	9	40	12,5	24	30	48	–	86	–	5010

\*) = Pair

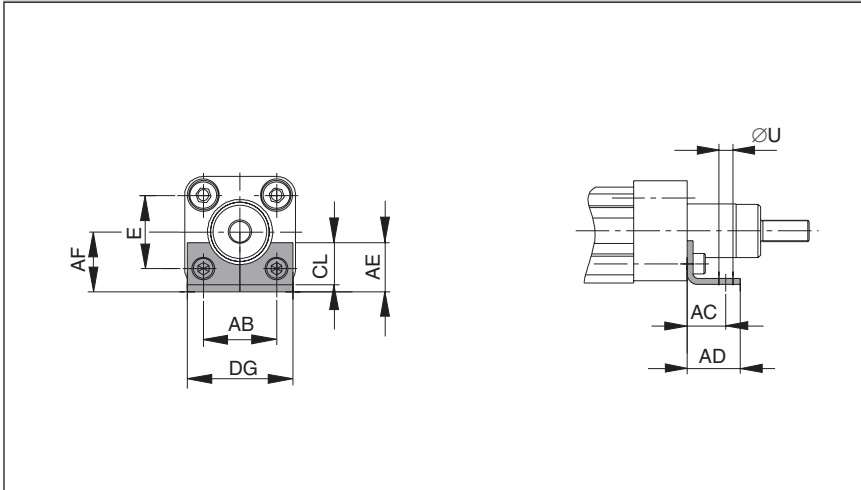
### Important:

With the OSP-E Screw series, the end cap mounting can only be used at the end opposite to the drive shaft.

We recommend the application of two mid section supports (data sheet 1.44.010E-9) at the drive shaft end of the actuator.



Series OSP-E25SBR, 25STR to E32SBR, 32STR: Type A1SR



# End Cap Mounting

Size 25, 32, 50



- Series OSP-E..SBR, ..STR  
Linear Drive with Screw  
and extending rod

On the end-face of each end cap there are four threaded holes for mounting the actuator.

The hole layout is square, so that the mounting can be fitted to the bottom, top or either side.

Material:

Series OSP-25 to 32:

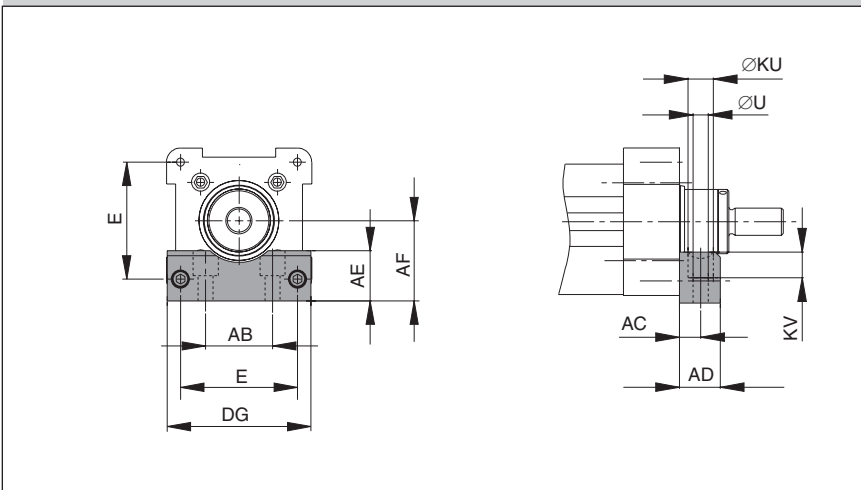
Galvanised steel.

Series OSP-50:

Anodized aluminium.

**The mountings are supplied as pairs**

Series OSP-E50SBR, 50STR: Type C1SR



Dimension Table [mm] and Order Instruction

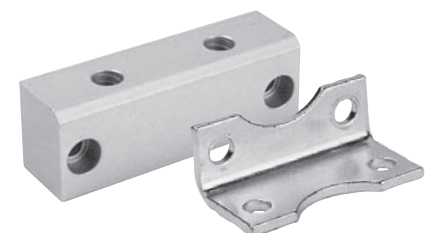
Series	E	ØU	AB	AC	AD	AE	AF	CL	DG	ØKU	KV	Order No. *)	
												Type A1SR	Type C1SR
OSP-E25SBR, STR	27	5,8	27	16	22	18	22	2,5	39	-	-	12263	-
OSP-E32SBR, STR	36	6,6	36	18	26	20	30	3	50	-	-	12264	-
OSP-E50SBR, STR	70	9	40	12,5	24	30	48	-	86	15	15	-	12265

\*) = single

**Important:**

With the OSP-E Screw series, the end cap mounting can only be used at the end opposite to the drive shaft.

We recommend the application of two mid section supports (data sheet 1.44.010E-9) at the drive shaft end of the actuator.



# Flange Mounting C

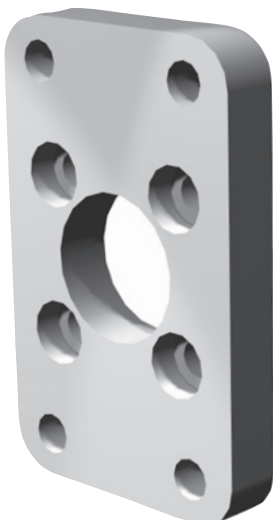
Size 25, 32, 50



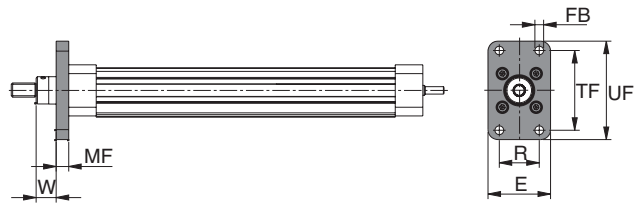
- Series OSP-E..SBR, ..STR  
Linear Drive with Screw  
and extending rod

The flange mounting C-E can only be mounted at the piston rod end of the linear drive.

Material: Aluminium



## Series OSP-E25SBR, STR to E50SBR, STR: Type C-E..



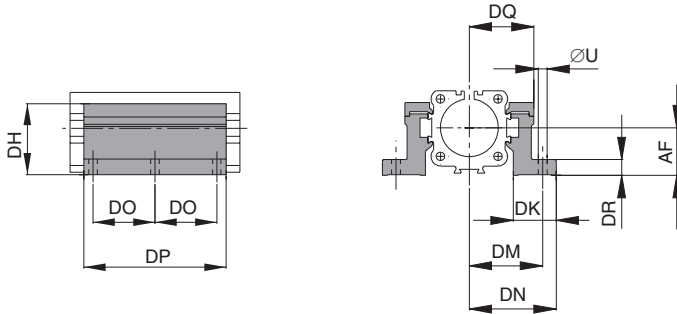
### Dimension Table [mm] and Order Instructions

Series	Type	∅ FB	E	MF	R	TF	UF	W	Order No.
OSP-E25SBR, STR	C-E25	7	50	10	32	64	79	16	12232
OSP-E32SBR, STR	C-E32	9	56	10	36	72	90	16	12233
OSP-E50SBR, STR	C-E50	12	100	16	63	126	153	21	12234



Series OSP-E25 to E50, Type MAE-..

OSP-E..B, ..SB, ..ST, ..SBR, ..STR



# Profile Mountings for Multi-Axis Systems

Size 20, 25, 32, 50



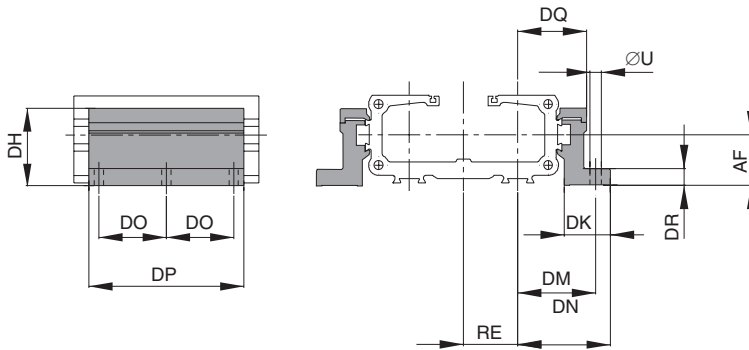
• Series OSP-E

Material: Anodized aluminum

Stainless steel version on request.

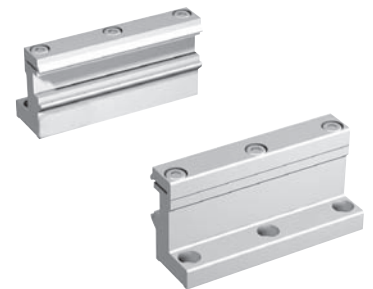
The mountings are supplied in pairs.

Series OSP-E20BHD to E50BHD, Type MAE-..



Weight (mass) [kg]

Series	Weight (mass) [kg] (pair)
MAE-20	0,3
MAE-25	0,3
MAE-32	0,4
MAE-50	0,8



Dimension Table [mm] and Order Instructions

Series	Type	R	U	AF	DF	DH	DK	DM	DN	DO	DP	DQ	DR	DT	EF	EM	EN	EQ	RE	Order No.
OSP-E20	MAE-20	M5	5.5	22	27	38	26	33.5	41	40	92	28	8	10	41,5	28.5	49	36	26	12278
OSP-E25	MAE-25	M5	5.5	22	27	38	26	40	47.5	40	92	34.5	8	10	41.5	28.5	49	36	26	12278
OSP-E32	MAE-32	M5	5.5	30	33	46	27	46	54.5	40	92	40.5	10	10	48.5	35.5	57	43	32	12279
OSP-E50	MAE-50	M6	7	48	40	71	34	59	67	45	112	52	10	11	64	45	72	57	44	12280

# Mid-Section Support

Size 20, 25, 32, 50



- Series OSP-E ..BHD  
Linear Drive with Toothed Belt  
and integrated guide

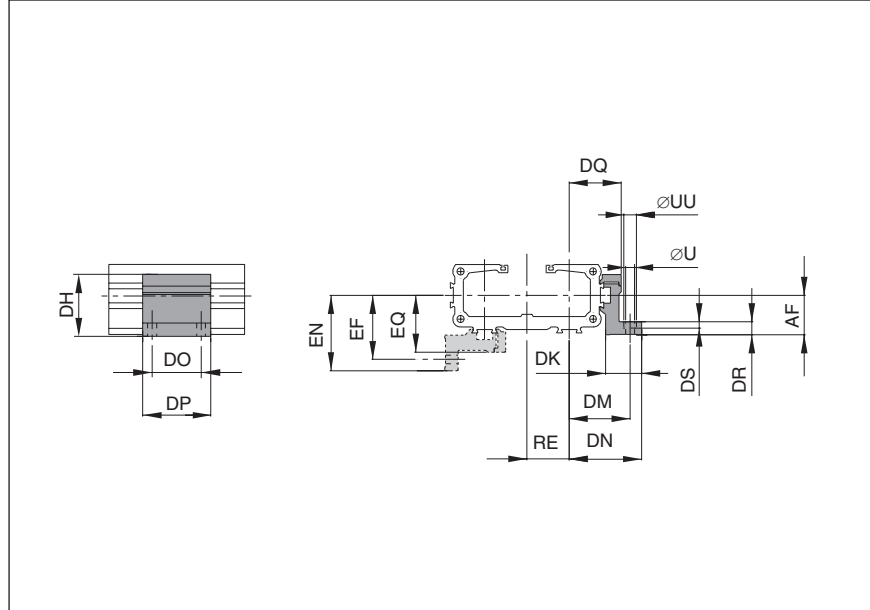
Note on Types E1 and D1:  
The mid-section support can also be mounted on the underside of the actuator, in which case its distance from the centre of the actuator is different.  
For design notes, see data sheet 1.15.002E-3

Stainless steel version on request.

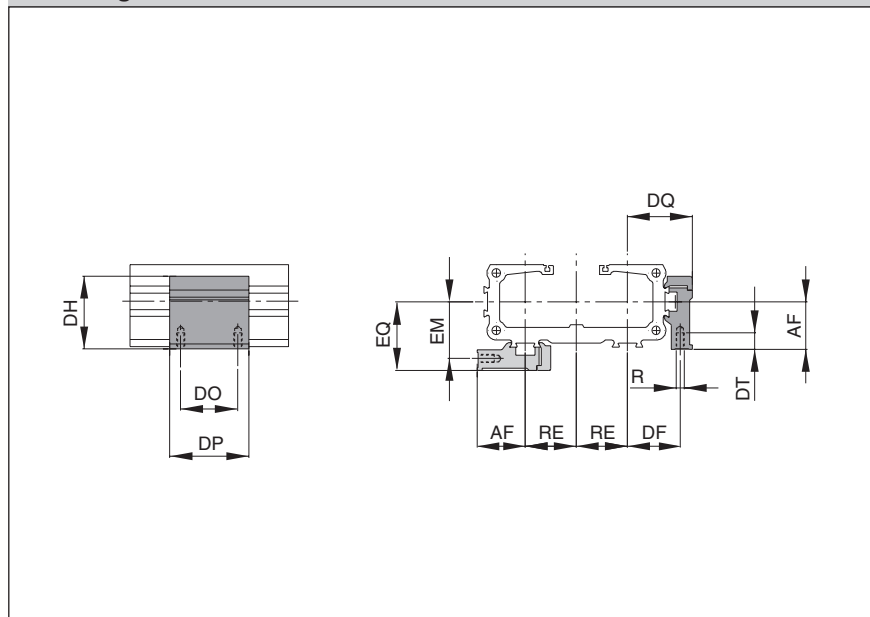
The mountings are supplied singly.



Series OSP-E20BHD to E50BHD: Type E1  
(Mounting with through holes)



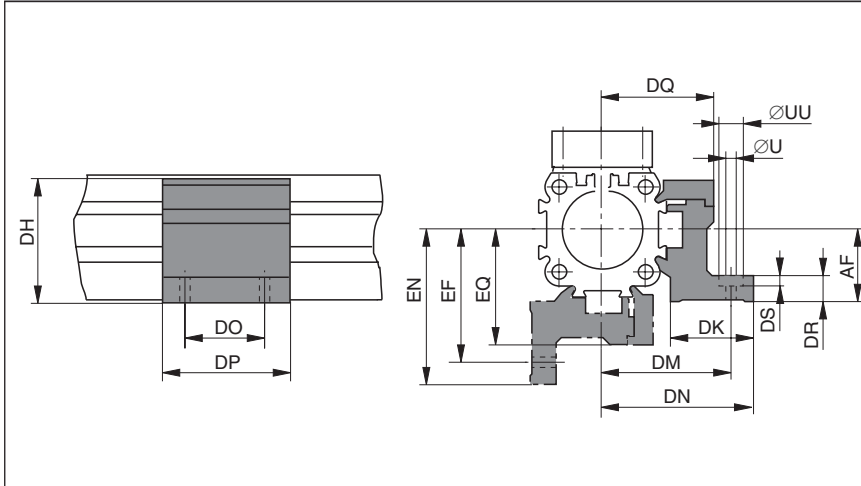
Series OSP-E20BHD to E50BHD: Type D1  
(Mountings with internal thread)



Dimension Table [mm] and Order Instructions

Series	R	U	UU	AF	DF	DH	DK	DM	DN	DO	DP	DQ	DR	DS	DT	EF	EM	EN	EQ	RE	Order No.	
																					Type E1	Type D1
OSP-E20	M5	5.5	10	22	20.5	38	26	33.5	41	36	50	28	8	5.7	10	41.1	28.1	48.6	35.6	23	20009	20008
OSP-E25	M5	5.5	10	22	27	38	26	40	47.5	36	50	34.5	8	5.7	10	41.5	28.5	49	36	26	20009	20008
OSP-E32	M5	5.5	10	30	33	46	27	46	54.5	36	50	40.5	10	5.7	10	48.5	35.5	57	43	32	20158	20157
OSP-E50	M6	7	-	48	40	71	34	59	67	45	60	52	10	-	11	64	45	72	57	44	15536	15534

**Series OSP-E25, E32, E50, Type E1**  
(Mounting from above / below with 2 through holes)



# Mid-Section Support

Size 25, 32, 50



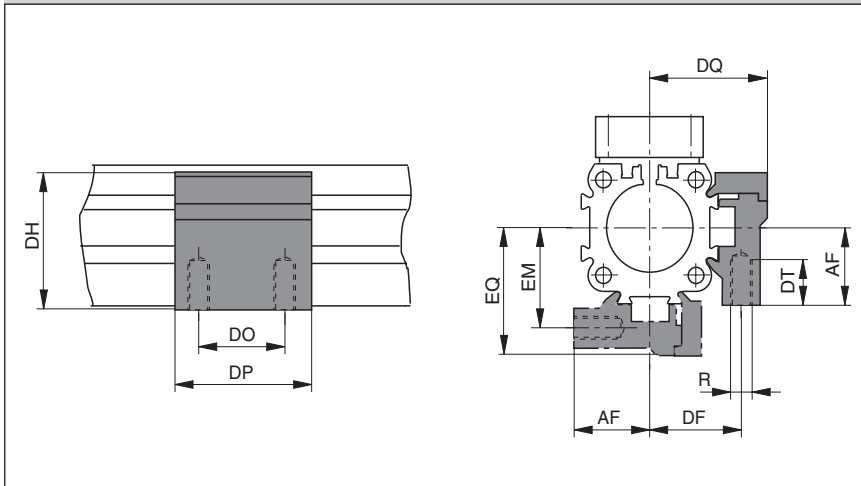
- **Series OSP-E..B**  
Linear Drive with toothed Belt and integrated Guides
- **Series OSP-E..SB, ..ST, ..SBR, ..STR**  
Linear Drive with Screw

Note on Types E1 and D1:  
The mid-section support can also be mounted on the underside of the actuator, in which case its distance from the centre of the actuator is different.

For design notes, see data sheet 1.20.002E-3, 1.25.002E-3, 1.30.002E-3, 1.35.002E-3

Stainless steel version on request

**Series OSP-E25, E32, E50, Type D1**  
(Mountings from below with 2 screws, internal thread)



**Dimension Table [mm] and Order Instructions**

Series	R	U	UU	AF	DF	DH	DK	DM	DN	DO	DP	DQ	DR	DS	DT	EF	EM	EN	EQ	Order No.	
																				Type E1	Type D1
OSP-E25	M5	5.5	10	22	27	38	26	40	47.5	36	50	34,5	8	5.7	10	41.5	28.5	49	36	20009	20008
OSP-E32	M5	5.5	10	30	33	46	27	46	54.5	36	50	40,5	10	5.7	10	48.5	35.5	57	43	20158	20157
OSP-E50	M6	7	-	48	40	71	34	59	67	45	60	52	10	-	11	64	45	72	57	20163	20162



# Adaptor Profile

Size 20, 25, 32, 50



• Series OSP-E

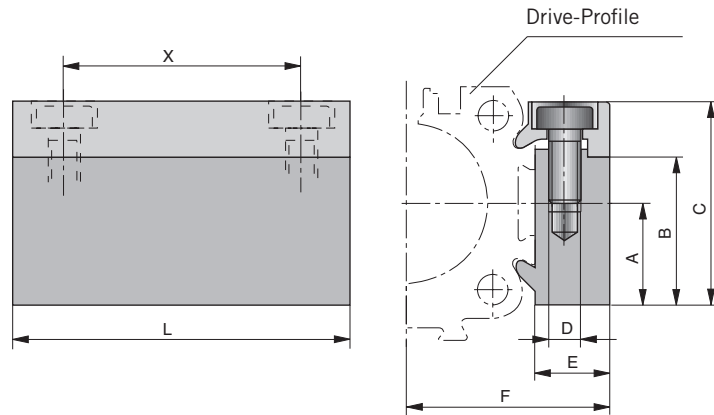
## Adaptor Profile OSP

- A universal attachment for mounting of additional items
- Solid material

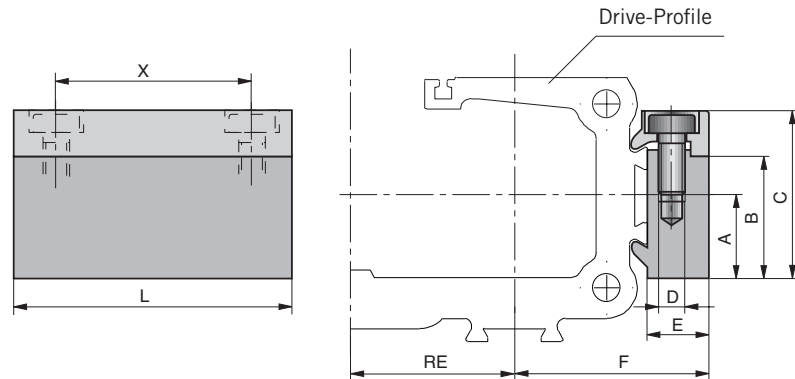
The mountings are supplied singly.

### Series OSP-E25 to E50

OSP-E..B, ..SB, ..ST, ..SBR, ..STR



### Series OSP-E20BHD to E50BHD



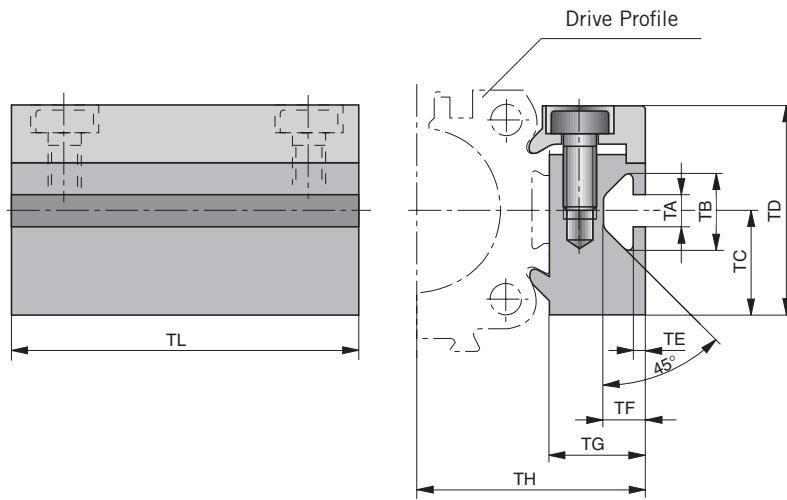
### Dimension Table [mm] and Order Instructions

Series	A	B	C	D	E	F	L	X	RE	Order No.	
										Standard	Stainless
OSP-E20	16	23	32	M5	10.5	24	50	36	23	20006	20186
OSP-E25	16	23	32	M5	10.5	30.5	50	36	26	20006	20186
OSP-E32	16	23	32	M5	10.5	36.5	50	36	32	20006	20186
OSP-E50	20	33	43	M6	14	52	80	65	44	20025	20267



Series OSP-E25 to E50

OSP-E..B, ..SB, ..ST, ..SBR, ..STR



# T-Nut Profile

Size 20, 25, 32, 50



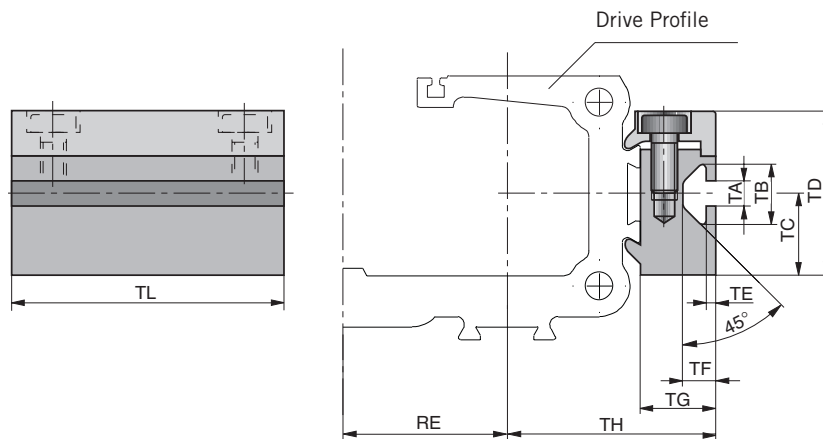
• Series OSP-E

### T-Nut Profile OSP

• A universal attachment for mounting with standard T-nuts.

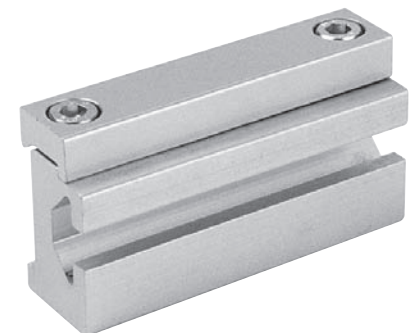
The mountings are supplied singly.

Series OSP-E20BHD to E50BHD



Dimension Table [mm] and Order Instructions

Series	RE	TA	TB	TC	TD	TE	TF	TG	TH	TL	Order No.	
											Standard	Stainless
OSP-E20	23	5	11.5	16	32	1.8	6.4	14.5	28	50	20007	20187
OSP-E25	26	5	11.5	16	32	1.8	6.4	14.5	34.5	50	20007	20187
OSP-E32	32	5	11.5	16	32	1.8	6.4	14.5	40.5	50	20007	20187
OSP-E50	44	8,2	20	20	43	4.5	12.3	20	58	80	20026	20268



# Adaptor Profile

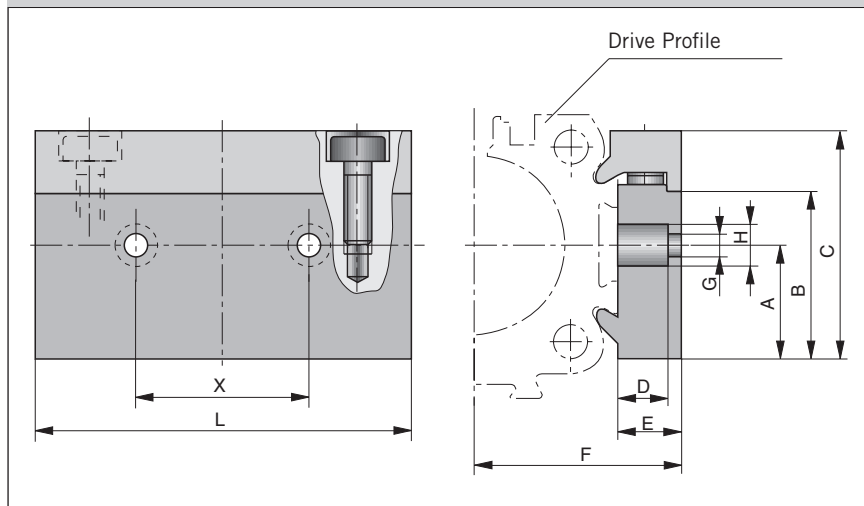
Size 25, 32, 50



to connect

- Series OSP-E with system profiles
- Series OSP-E with Series OSP-E or OSP-P

## Adaptor Profile



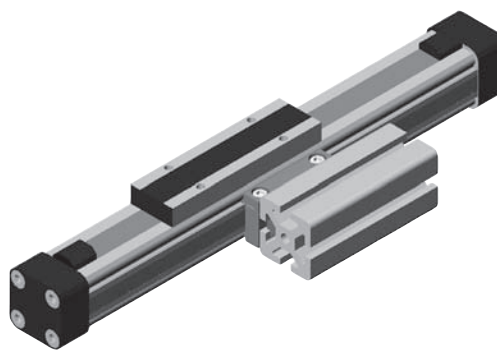
### Dimension Table [mm] and Order Instructions

Series	for the connection to the driver of	A	B	C	D	E	F	G	H	L	X	Order No.
OSP-E25	OSP32-50	16	23	32	8.5	10.5	30.5	6.6	11	60	27	20850
OSP-E32	OSP32-50	16	23	32	8.5	10.5	36.5	6.6	11	60	27	20850
OSP-E50	OSP32-50	20	33	43	8	14	52	6.6	11	60	27	20851

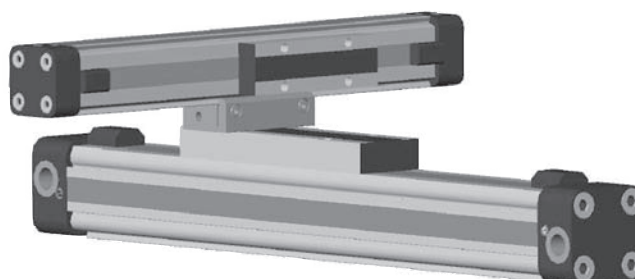
The mountings are supplied singly.

### Connecting possibilities

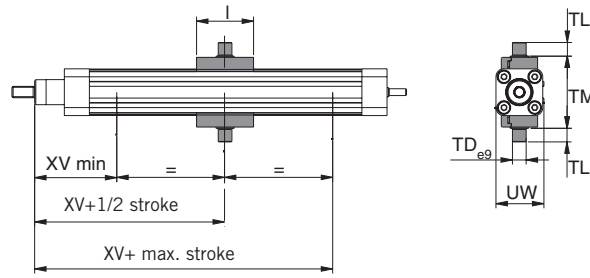
#### Connection of series OSP-E with system profiles



#### Connection of series OSP-E with series OSP-E/OSP-P



Series OSP-E25SBR, 25STR to 50SBR, 50STR: Type EN-..



Material: Aluminium

Dimension Table [mm] and Order Instructions – for Trunnion Mounting EN-..

Series	Type	l	∅ TD <sub>e9</sub>	TL	TM	UW	XV <sub>min</sub>	XV+ 1/2Stroke	XV+ max.Stroke	Order No.
OSP-E25SBR, STR	EN-E25	50	12	12	63	42	73	83	62	12235
OSP-E32SBR, STR	EN-E32	50	16	16	75	52	76.5	90	69.5	12236
OSP-E50SBR, STR	EN-E50	80	20	20	108	87	110	110	84	12237

# Trunnion Mounting EN

# Pivot Mounting EL

Size 25, 32, 50

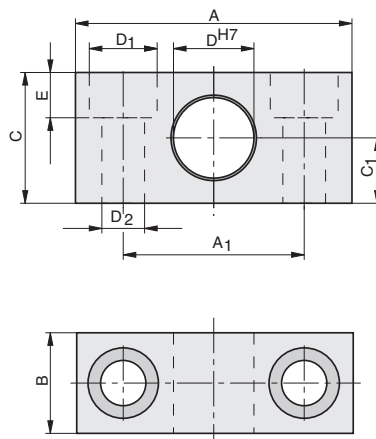


- Series OSP-E..SBR, ..STR For Linear Drive with spindle drive and piston rod

The trunnion mounting is fitted to the dovetail rails of the actuator profile and is continuously adjustable in axial direction.

The mountings are supplied in pairs.

Series OSP-E25SBR, 25STR to 50SBR, 50STR: Type EL-..



Material: Aluminium

Dimension Table [mm] and Order Instructions – for Pivot Mounting EL-..

Series	Type	A	A <sub>1</sub>	B	C	C <sub>1</sub>	∅D <sup>H7</sup>	∅D <sub>1</sub>	∅D <sub>2</sub>	E	Weight (mass) (kg)	Order No.
OSP-E25SBR, STR	EL-032	55	36	20	26	13	12	13.5	8.4	9	0.06	PD23381
OSP-E32SBR, STR	EL-040/050	55	36	20	26	13	16	13.5	8.4	9	0.06	PD23382
OSP-E50SBR, STR	EL-063/080	65	42	25	30	15	20	16.5	10.5	11	0.10	PD23383

Trunnion Mounting EN



Pivot Mounting EL



# Clevis Mounting

Size 25, 32, 50



- Series OSP-E..B  
For Linear Drives with Belt
- Series OSP-E...SB, ..ST  
For Linear Drives with Screw

When external guides are used, parallelism deviations can lead to mechanical strain on the piston. This can be avoided by the use of a clevis mounting.

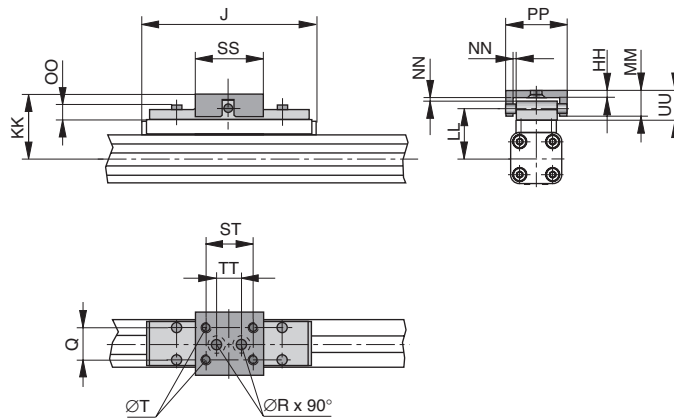
Freedom of movement is provided as follows:

- Tilting in direction of movement
- Vertical compensation
- Tilting sideways
- Horizontal compensation

A stainless steel version is also available.

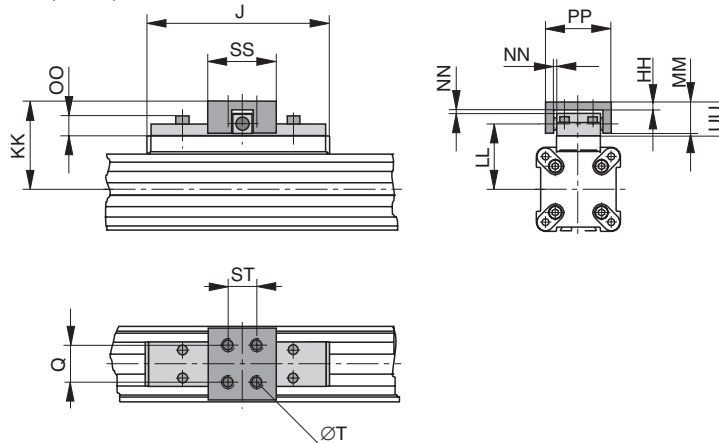
## Series OSP-E25 to E32

### OSP-E..B, ..SB, ..ST



## Series OSP-E50

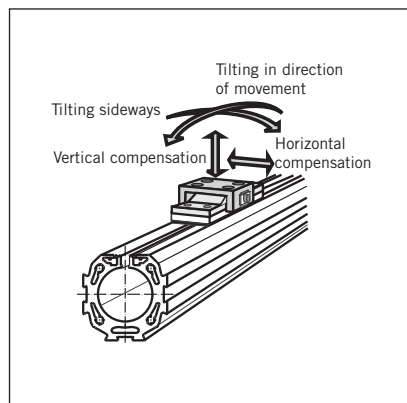
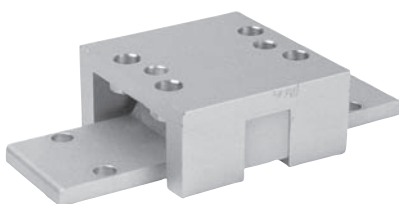
### OSP-E..B, ..SB, ..ST



## Dimension Table [mm] and Order Instructions

Series	J	Q	T	øR	HH	KK	LL	MM	NN*	OO	PP	SS	ST	TT	UU	Order No.	
																Standard	Stainless
OSP-E25	117	16	M5	5.5	3.5	52	39	19	2	9	38	40	30	16	21	20005	20092
OSP-E32	152	25	M6	6.6	6	68	50	28	2	13	62	60	46	40	30	20096	20094
OSP-E50	200	25	M6	-	6	79	61	28	2	13	62	60	46	-	30	20097	20095

\* Dimension NN gives the possible plus and minus play in horizontal and vertical movement, which also makes tilting sideways possible.



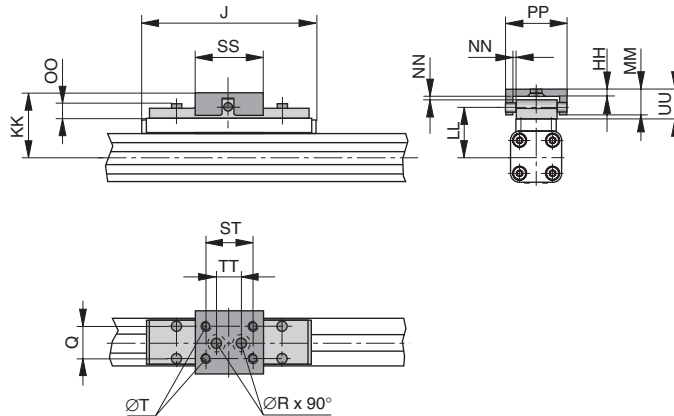
### Please note:

When using additional inversion mountings, take into account the dimensions in data sheet 1.45.025E.



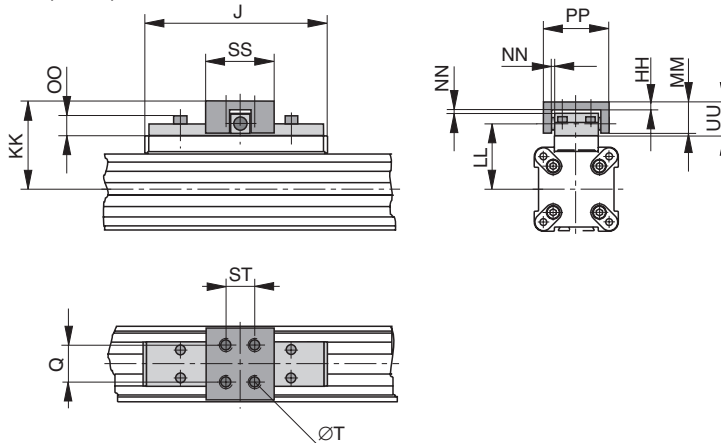
Series OSP-E25 to E32

OSP-E..B, ..SB, ..ST



Series OSP-E50

OSP-E..B, ..SB, ..ST



# Clevis Mounting, low back lash

Size 25, 32, 50



- Series OSP-E..B  
Linear Drives with Belt
- Series OSP-E..SB, ..ST  
Linear Drives with Screw

When external guides are used, parallelism deviations can lead to mechanical strain on the piston. This can be avoided by the use of a clevis mounting.

In the drive direction the clevis mounting has a low backlash fit.

Freedom of movement is provided as follows:

- Tilting in direction of movement
- Vertical compensation
- Tilting sideways
- Horizontal compensation

A stainless steel version is also available.

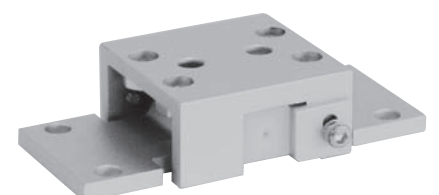
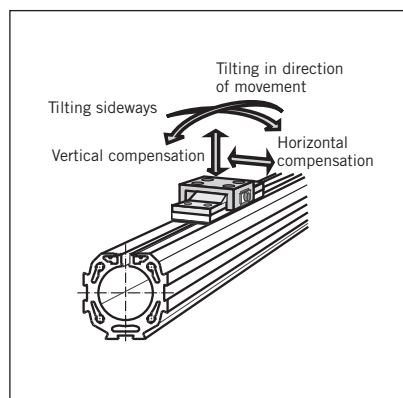
Dimension Table [mm] and Order Instructions

Series	J	Q	T	øR	HH	KK	LL	MM	NN*	OO	PP	SS	ST	TT	UU	Order No.	
																Standard	Stainless
OSP-E25	117	16	M5	5.5	3.5	52	39	19	2	9	49	40	30	16	21	20496	20498
OSP-E32	152	25	M6	6.6	6	68	50	28	2	13	69	60	46	40	30	20497	20499
OSP-E50	200	25	M6	—	6	79	61	28	2	13	69	60	46	—	30	20812	20818

\* Dimension NN gives the possible plus and minus play in horizontal and vertical movement, which also makes tilting sideways possible

Please note:

When using additional inversion mountings, take into account the dimensions in data sheet 1.45.025E



# Inversion Mounting

Size 25, 32, 50



- Series OSP-E..B  
For Linear Drive with Belt
- Series OSP-E-..SB, ..ST  
For Linear Drive with Screw

In dirty environments, or where there are special space problems, inversion of the cylinder is recommended. The inversion bracket transfers the driving force to the opposite side of the cylinder. The size and position of the mounting holes are the same as on the standard cylinder.

Stainless steel version on request.

**Please note:**

Other components of the OSP system such as **mid-section supports**, **magnetic switches** can still be mounted on the free side of the cylinder.

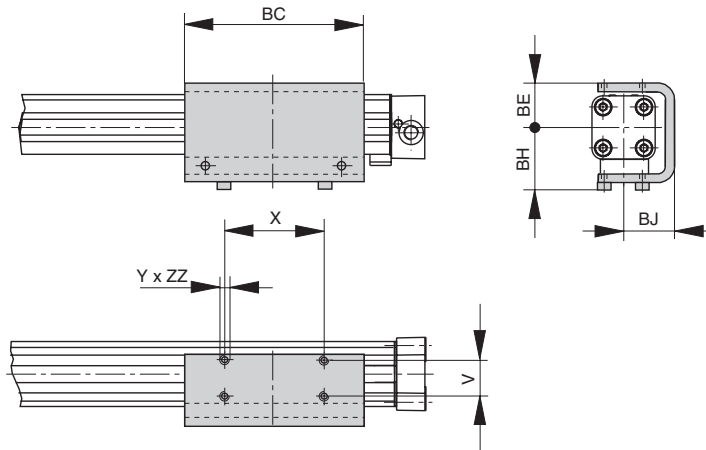
**Important Note:**

May be used in combination with **Clevis Mounting**, ref. dimensions in data sheet 1.44.010E-13, -14



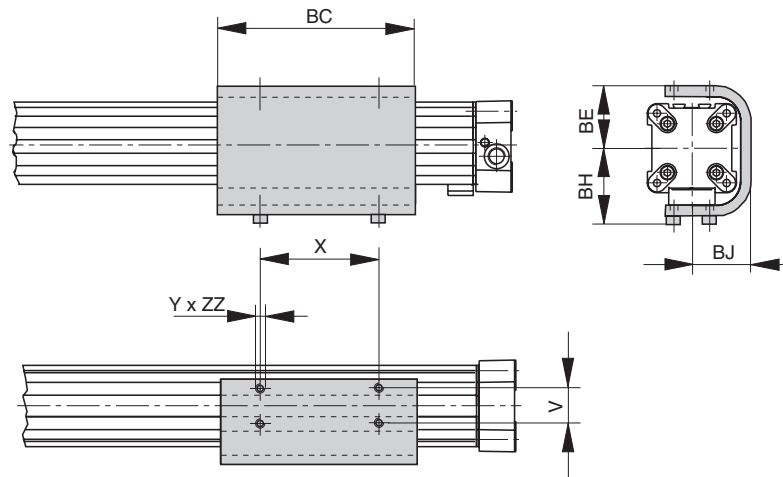
## Series OSP-E25 to E32

### OSP-E..B, ..SB, ..ST



## Series OSP-E50

### OSP-E..B, ..SB, ..ST

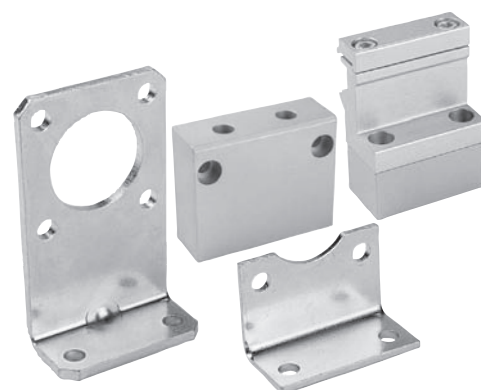


### Dimension Table (mm) and Order Instructions

Series	V	X	Y	BC	BE	BH	BJ	ZZ	Order No.
OSP-E25	25	65	M5	117	31	43	33.5	6	20037
OSP-E32	27	90	M6	150	38	51	39.5	6	20161
OSP-E50	27	110	M6	200	55	65	52	8	20166

# Accessories for Electric Linear Drives Series OSP-E

## Mountings for Linear drive with guide



### Contents



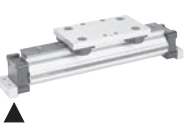
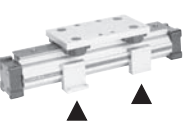
Description	Data Sheet	Page
Overview mountings/guides	1.44.014E-2	144
End Cap Mounting	1.44.014E-3	145
Mid-Section Support	1.44.014E-4	146


# Overview

## Mountings for Linear Drives with OSP-Guides

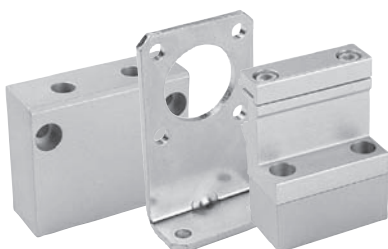


- Series OSP-E..B  
Linear Drive with Belt
- Series OSP-E..SB, ..ST  
Linear Drive with Screw \*

Overview											
Type of mounting des Zylinders	Type	Versions – OSP-guide									
		SLIDELINE PROLINE MULTIBRAKE			POWERSLIDE						
		25	32	50	25/ 25	25/ 35	25/ 44	32/ 35	32/ 44	50/ 60	50/ 76
End Cap Mounting 	Type A1										
	Type A2	0	0								
	Type A3				0	0		0			
End Cap Mounting reinforced 	Type B1	X	X		X	X	X	X	X		
	Type B3										
	Type B4						0		0		
End Cap Mounting 	Type C1			X						X	X
	Type C2			0							
	Type C3									0	
	Type C4										0
Mid-Section Support narrow Mid-Section Support wide 	Type D1	X	X	X	X	X	X	X	X	X	X
	Type E1	X	X	X	X	X	X	X	X	X	X
	Type E2	0	0	0							
	Type E3				0	0		0		0	
	Type E4						0		0		0

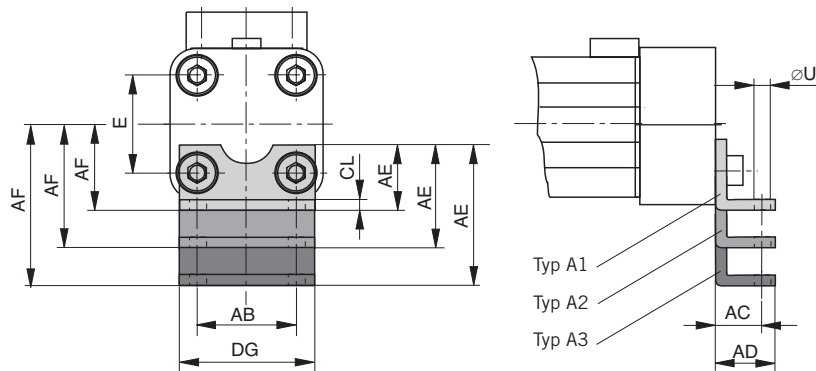
- X = mounting position carriage top (12 clock position)
- 0 = mounting position carriage side (3 or 9 clock position)
-  = available components

**\* Please note:**  
With series OSP-E-Spindle the end cap mountings A, B and C can only be fitted to the side opposite to the drive shaft. On the side of the drive shaft we recommend to use our mid-section supports (data sheet 1.44.014E-4).



Series OSP – E25, E32: Type A

OSP-E..B, ..SB, ..ST



**End Cap Mounting \***

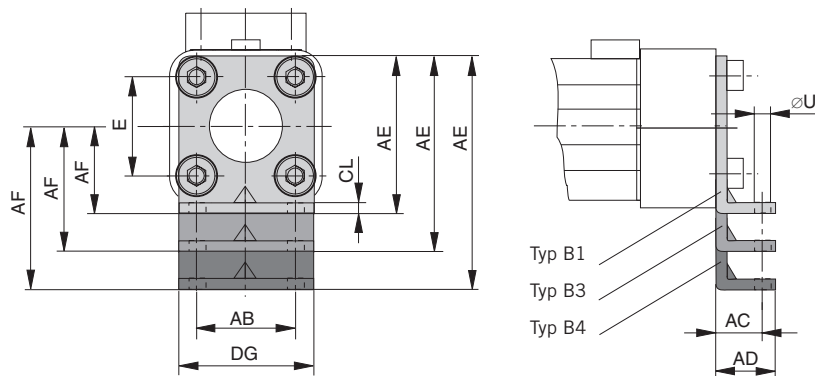
At the end face of each end caps there are four holes with internal threads to fix the drive. The hole layout is square so that the drive can be fitted on the bottom, the top or either side.

Material: series OSP-25, 32:  
steel, zinc galvanized  
series OSP-50:  
aluminium, anodized

**The mountings are supplied in pairs.**

Series OSP – E25, E32: Type B

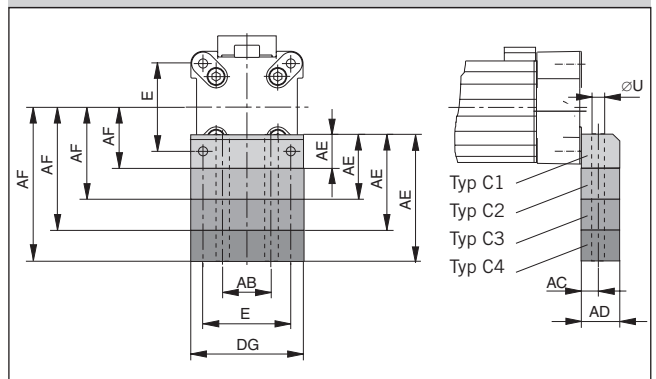
OSP-E..B, ..SB, ..ST



Dimension Table [mm]  
– Dimension AE and AF (Depending on type of mounting)

Type of mount.	Dimension AE at size			AF at size		
	25	32	50	25	32	50
A1	18	20	-	22	30	-
A2	33	34	-	37	44	-
A3	45	42	-	49	52	-
B1	42	55	-	22	30	-
B3	-	-	-	-	-	-
B4	80	85	-	60	60	-
C1	-	-	30	-	-	48
C2	-	-	39	-	-	57
C3	-	-	54	-	-	72
C4	-	-	77	-	-	95

Series OSP – E50: Type C



Dimension Table [mm]

Series	E	$\varnothing U$	AB	AC	AD	CL	D
OSP-E25	27	5.8	27	16	22	2.5	39
OSP-E32	36	6.6	36	18	26	3	50
OSP-E50	70	9	40	12.5	24	-	86

\* see survey for mounting types on page 1.44.014E-2

# Mid Section Support

Information on type E1 and D1:

The mid-section supports can also be fitted to the bottom side of the drive. In this case please observe the new centre line dimensions of the drive.

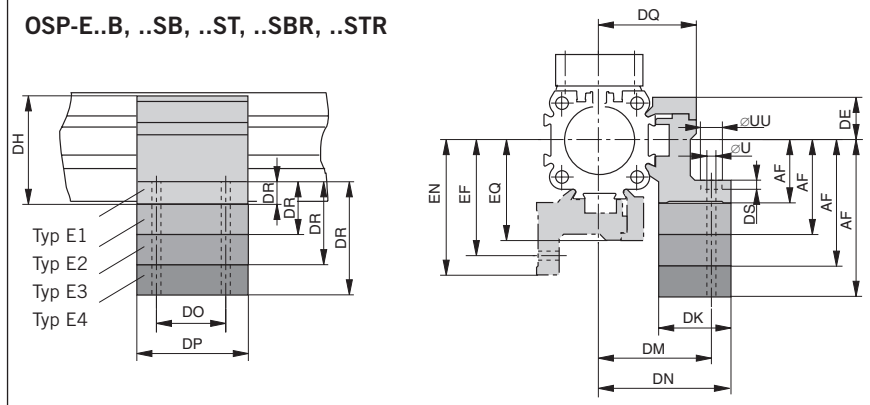
For layout information please refer to the data sheet 1.40.021-2, 1.40.022-3, 1.40.024-3

Stainless version on request.



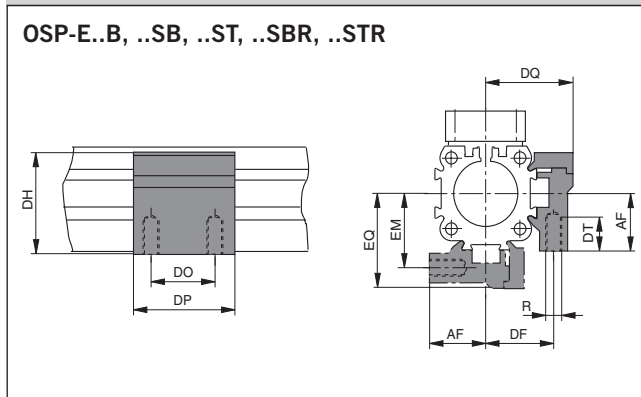
## Series OSP-E25, E32, E50: Type E. (Mounting with through hole)

### OSP-E..B, ..SB, ..ST, ..SBR, ..STR



## Series OSP-E25, E32, E50: Type D1 (Mounting with internal thread)

### OSP-E..B, ..SB, ..ST, ..SBR, ..STR



Dimension Table [mm] – Dimension DR and AF (Depending on type of mounting)						
Type of mount.	Dimensions DR at size			AF at size		
	25	32	50	25	32	50
D1	–	–	–	22	30	48
E1	8	10	10	22	30	48
E2	23	24	19	37	44	57
E3	35	32	31	49	52	72
E4	46	40	57	60	60	95

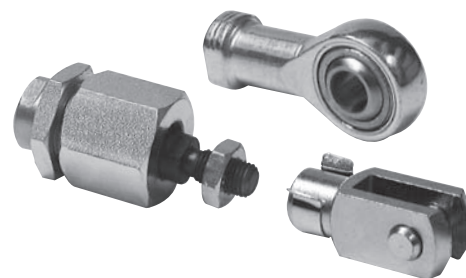
Dimension Table [mm]																			
Series	R	U	UU	DE	DF	DH	DK	DM	DN	DO	DP	DQ	DS	DT	EF	EM	EN	EQ	
OSP-E25	M5	5.5	10	16	27	38	26	40	47.5	36	50	34.5	5.7	10	41.5	28.5	49	36	
OSP-E32	M5	5.5	10	16	33	46	27	46	54.5	36	50	40.5	5.7	10	48.5	35.5	57	43	
OSP-E50	M6	7	–	23	40	71	34	59	67	45	60	52	–	11	64	45	72	57	

Order Instructions for Mountings Type A – Type B – Type C – Type D – Type E			
Type of mounting (Versions)	Order No. Size		
	25	32	50
A1 *1)	2010	3010	–
A2 *1)	2040	3040	–
A3 *1)	2060	3060	–
B1 *1)	20311	20313	–
B3 *1)	–	–	–
B4 *1)	20312	20314	–
C1 *1)	–	–	5010
C2 *1)	–	–	20349
C3 *1)	–	–	20350
C4 *1)	–	–	20351
D1 *2)	20008	20157	20162
E1 *2)	20009	20158	20163
E2 *2)	20352	20355	20361
E3 *2)	20353	20356	20362
E4 *2)	20354	20357	20363

\*1) The mountings are supplied in pairs  
\*2) The mountings are supplied simply

# Accessories for Linear Drives Series OSP-E

## Piston Rod Knuckle



### Contents

Description	Data Sheet	Page
Piston Rod Eye according to ISO 8139	1.44.018E-2	148
Piston Rod Clevis according to ISO 8140	1.44.018E-2	148
Piston rod Compensating Coupling	1.44.018E-3	149

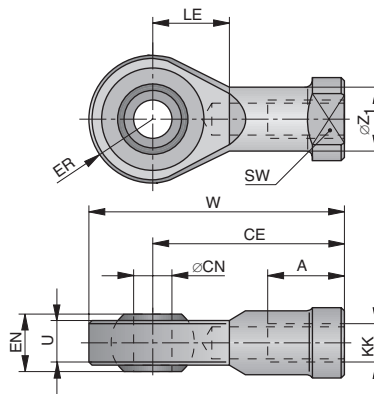
# Piston Rod Eye according to ISO 8139

**OSP**  
ORIGA  
SYSTEM  
PLUS

- Series OSP-E..SBR, ..STR  
Linear Drive with Screw and Piston Rod



Piston Rod Eye according to ISO 8139 (CETOP RP103 P)  
Type: GA-..



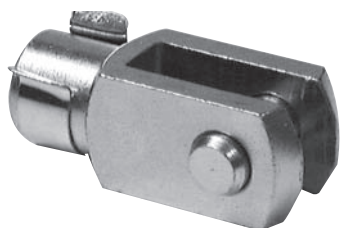
Order Instructions, Dimension Table [mm], Weight

Series	Type	A	CE	$\phi$ CN	EN	ER	KK	LE	SW	U	W	$\phi Z_1$	Weight [kg]	Order No.
OSP-E25SBR, STR	GA-M10x1.25	20	43	10	14	14	M10x1.25	15	17	10.5	57	15	0.072	KY6147
OSP-E32SBR, STR	GA-M10x1.25	20	43	10	14	14	M10x1.25	15	17	10.5	57	15	0.072	KY6147
OSP-E50SBR, STR	GA-M16x1.5	28	64	16	21	21	M16x1.5	22	22	15	85	22	0.21	KY6150

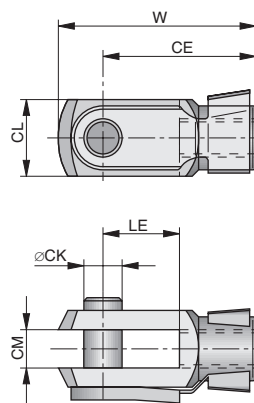
# Piston Rod Clevis according to ISO 8140

**OSP**  
ORIGA  
SYSTEM

- Series OSP-E..SBR, ..STR  
Linear Drive with Screw and Piston Rod



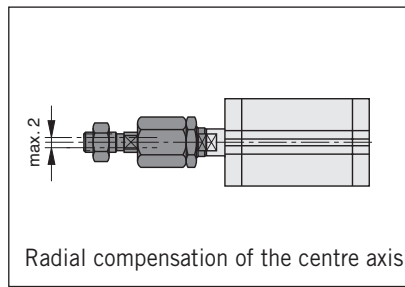
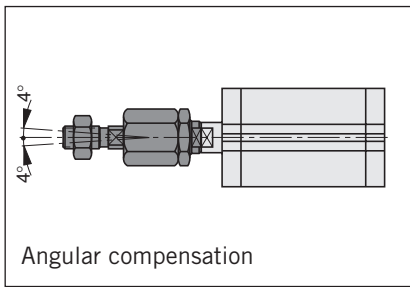
Piston Rod Clevis according to ISO 8140 (CETOP RP102P)  
Type: GK-..



Order Instructions, Dimension Table [mm], Weight

Series	Type	$\phi$ CK	CE	CL	CM	KK	LE	W	Weight[kg]	Order No.
OSP-E25SBR, STR	GK-M10x1.25	10	40	20	10	M10x1.25	20	52	0.08	KY6135
OSP-E32SBR, STR	GK-M10x1.25	10	40	20	10	M10x1.25	20	52	0.08	KY6135
OSP-E50SBR, STR	GK-M16x1.5	16	64	32	16	M16x1.5	32	83	0.30	KY6139

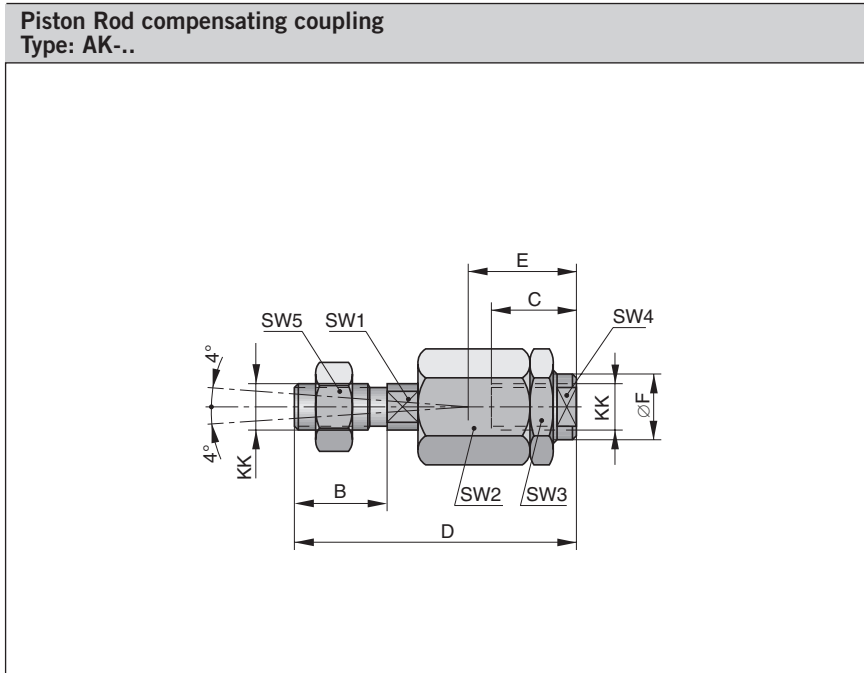




# Piston Rod Compensating Coupling

**OSP**  
ORIGA  
SYSTEM  
PLUS

- Series OSP-E..SBR, ..STR  
Linear Drive with Screw  
and Piston Rod



Order Instructions, Dimension Table [mm], Weight															
Series	Type	B	C	D ±2	E	ØF	KK	SW1	SW2	SW3	SW4	SW5	Weight [kg]	Order No.	
OSP-E25SBR, STR	AK-M 10x1.25	20	23	73	31	21,5	M10x1.25	12	30	30	19	17	0.218	KY 1129	
OSP-E32SBR, STR	AK-M 10x1.25	20	23	73	31	21,5	M10x1.25	12	30	30	19	17	0.218	KY 1129	
OSP-E50SBR, STR	AK-M16x1.5	40	32	108	45	33,5	M16x1.5	19	41	41	30	30	0.637	KY 1133	

