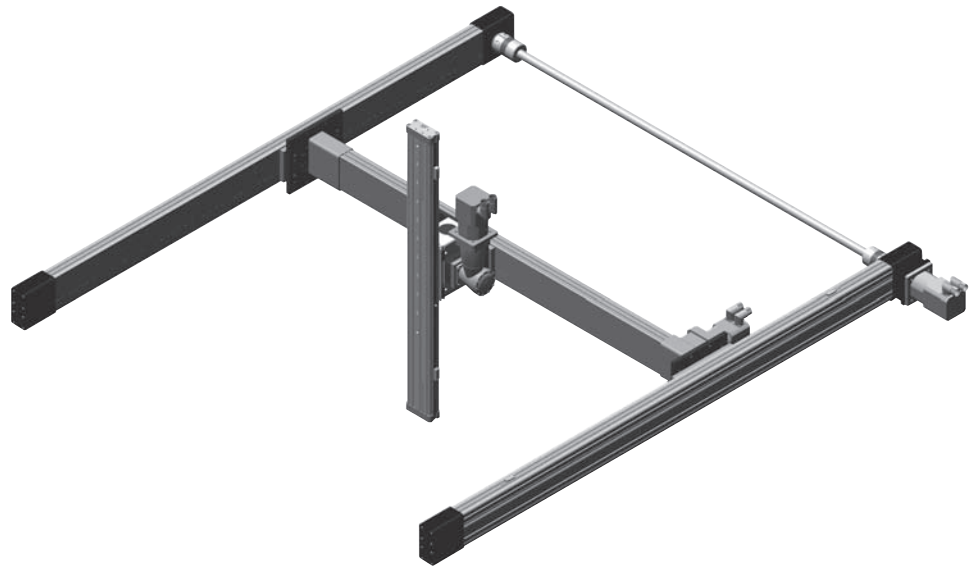


# Multi-Axis System for Electrical Linear Drives Series OSP-E



## Contents

Description	Data Sheet No.	Page
Overview	1.38.001E	85-88
Adapter plates	1.38.002E-1 to 9	89-97
Profile Mountings	1.44.010E-5	129
Intermediate Drive Shafts	1.38.004E	101

# MULTI-AXIS CONNECTION SYSTEM – SIMPLIFIES ENGINEERING AND INSTALLATION

A completely new system for easy connection of OSP-E linear drives in multi-axis systems.

## MULTI-AXIS CONNECTIONS

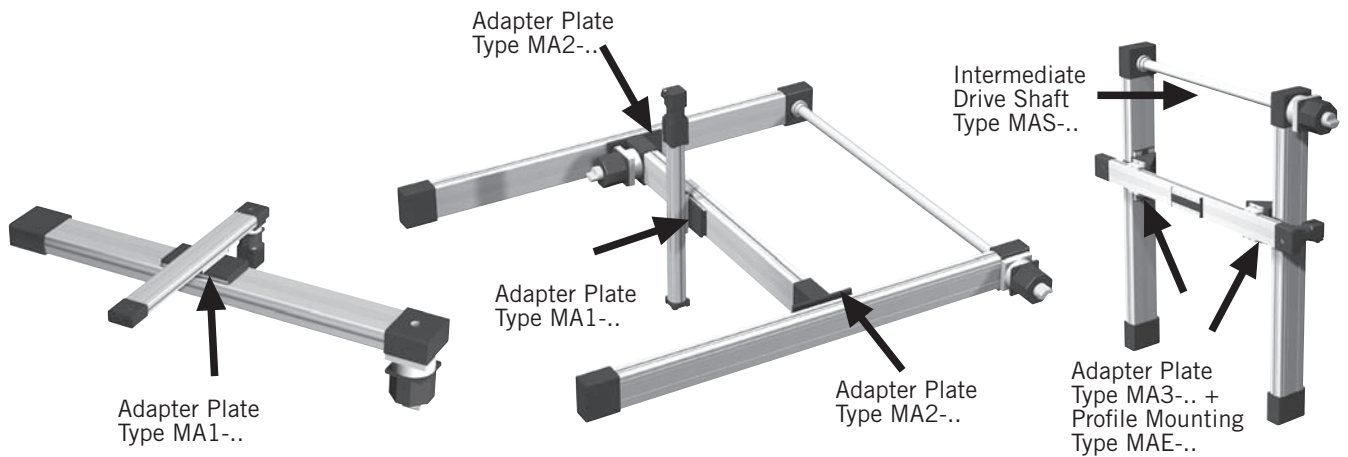
With this highly adaptable system for connection of linear drives in multi-axis arrangements, Parker Origa offers design engineers complete flexibility. A wide range of adapter plates, profile mountings and intermediate drive shafts simplify engineering and installation.

The connection system enables actuators to be mounted in carrier to carrier, carrier to profile, carrier to end cap mounting, carrier to end cap.

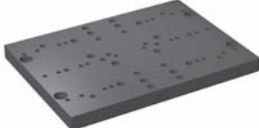
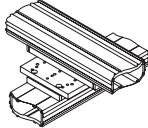
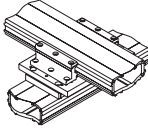
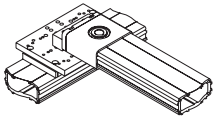
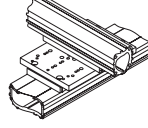
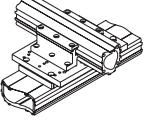
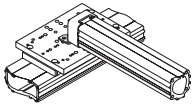
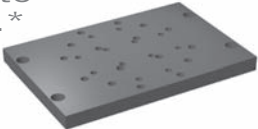
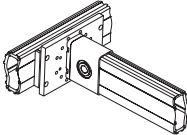
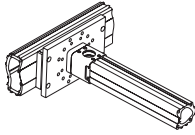
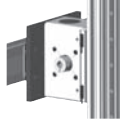
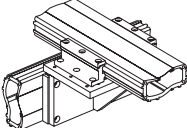
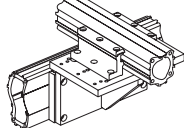
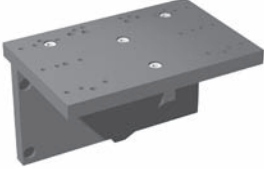
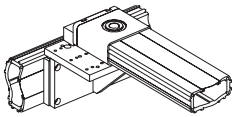
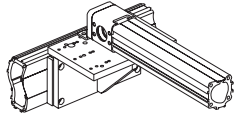
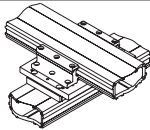
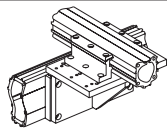


Developed for the heavy-duty toothed belt drive series OSP-E..BHD, the system provides cross-connection with the same series and also other linear drive series in the ORIGA SYSTEM PLUS range.



# MULTI-AXIS CONNECTION SYSTEM

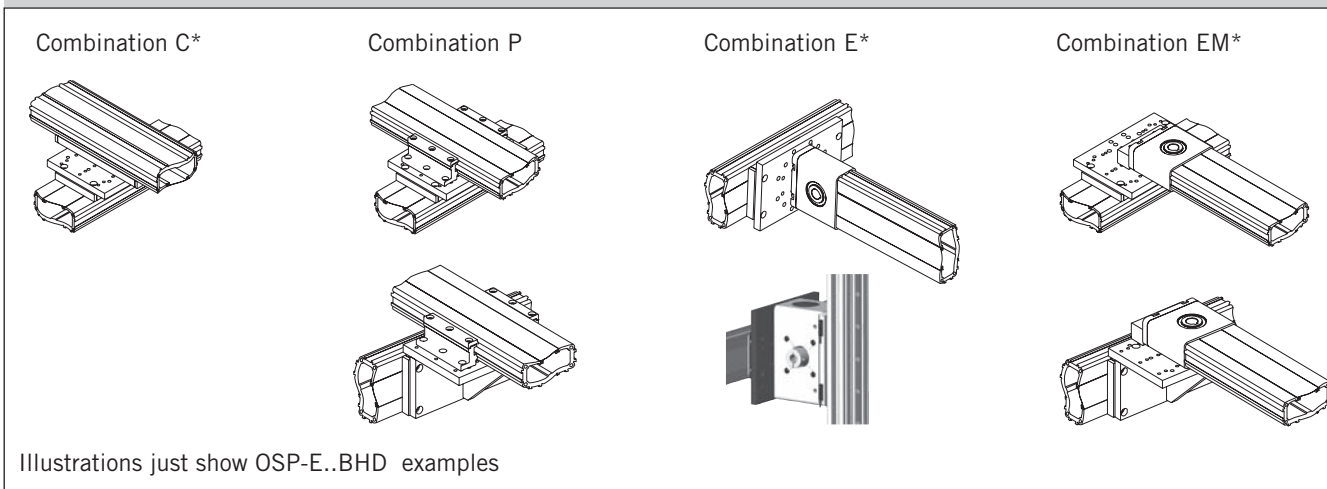


\* For available standard combinations, see data sheet 1.38.001E-4

<p><b>Adapter Plate Type MA1-..*</b></p> <p>For connecting carrier to carrier, carrier to profile mounting or carrier to end cap mounting.</p> 	<p>Combination C*</p> 	<p>Combination P*</p> 	<p>Combination EM*</p> 
	<p>Combination C*</p> 	<p>Combination P*</p> 	<p>Combination EM*</p> 
<p><b>Adapter Plate Type MA2-..*</b></p> <p>For connecting carrier to end cap.</p> 	<p>Combination E*</p> 	<p>Combination E*</p> 	<p>Combination E*</p> 
	<p>Combination P*</p> 	<p>Combination P*</p> 	
<p><b>Adapter Plate Type MA3-..*</b></p> <p>For connecting 90° carrier to profile mounting or carrier to end cap mounting.</p> 	<p>Combination EM*</p> 	<p>Combination EM*</p> 	
	<p>Combination P*</p> 	<p>Combination P*</p> 	
<p><b>Profile Mounting Type MAE-..</b></p> 			
<p><b>Intermediate Drive Shaft Type MAS-..</b></p> 			

# AVAILABLE MOUNTING COMBINATIONS

## Available Mounting Combinations



Series	Type	25BHD				32BHD				50BHD				25BV				25B/SB/ST				32B/SB/ST				50B/SB/ST			
		C <sup>1</sup>	P <sup>2</sup>	E <sup>3</sup>	EM <sup>4</sup>	C <sup>5</sup>	P <sup>6</sup>	E <sup>7</sup>	EM <sup>8</sup>	C <sup>9</sup>	P <sup>10</sup>	E <sup>11</sup>	EM <sup>12</sup>	E <sup>11</sup>	C <sup>13</sup>	P <sup>14</sup>	E <sup>15</sup>	EM <sup>16</sup>	C <sup>17</sup>	P <sup>18</sup>	E <sup>19</sup>	EM <sup>20</sup>	C <sup>21</sup>	P <sup>22</sup>	E <sup>23</sup>	EM <sup>24</sup>			
OSP-E25BHD	MA1-25	X	X		X	X	X		X						X	X		X	X	X	X	X	X	X	X	X	X		
OSP-E32BHD	MA1-32	X	X		X	X	X		X	X	X		X						X	X		X	X	X	X	X	X		
OSP-E50BHD	MA1-50	X	X		X	X	X		X	X	X		X						X				X	X		X	X		
OSP-E25BHD	MA2-25			X				X																		X			
	MA2-32												X																
OSP-E32BHD	MA2-32			X				X				X		X												X			
OSP-E50BHD	MA2-50			X				X				X		X												X			
OSP-E25BHD	MA3-25		X		X		X		X						X		X		X		X		X		X		X		
OSP-E32BHD	MA3-32		X		X		X		X		X		X						X		X		X		X		X		
OSP-E50BHD	MA3-50		X		X		X		X		X		X										X		X		X		

Abbreviations:

- C** = MAn to Carrier,
- P** = MAn to Profile mounting,
- E** = MAn to End cap,
- EM** = MAn to End cap mounting (n=1,2,3)

\* For type OSP-E..SBR / ..STR only combination P is available.

Values in superscript refer to corresponding adapter plate dimensions on data sheets 1.38.002E-1 to 1.38.002E-9.

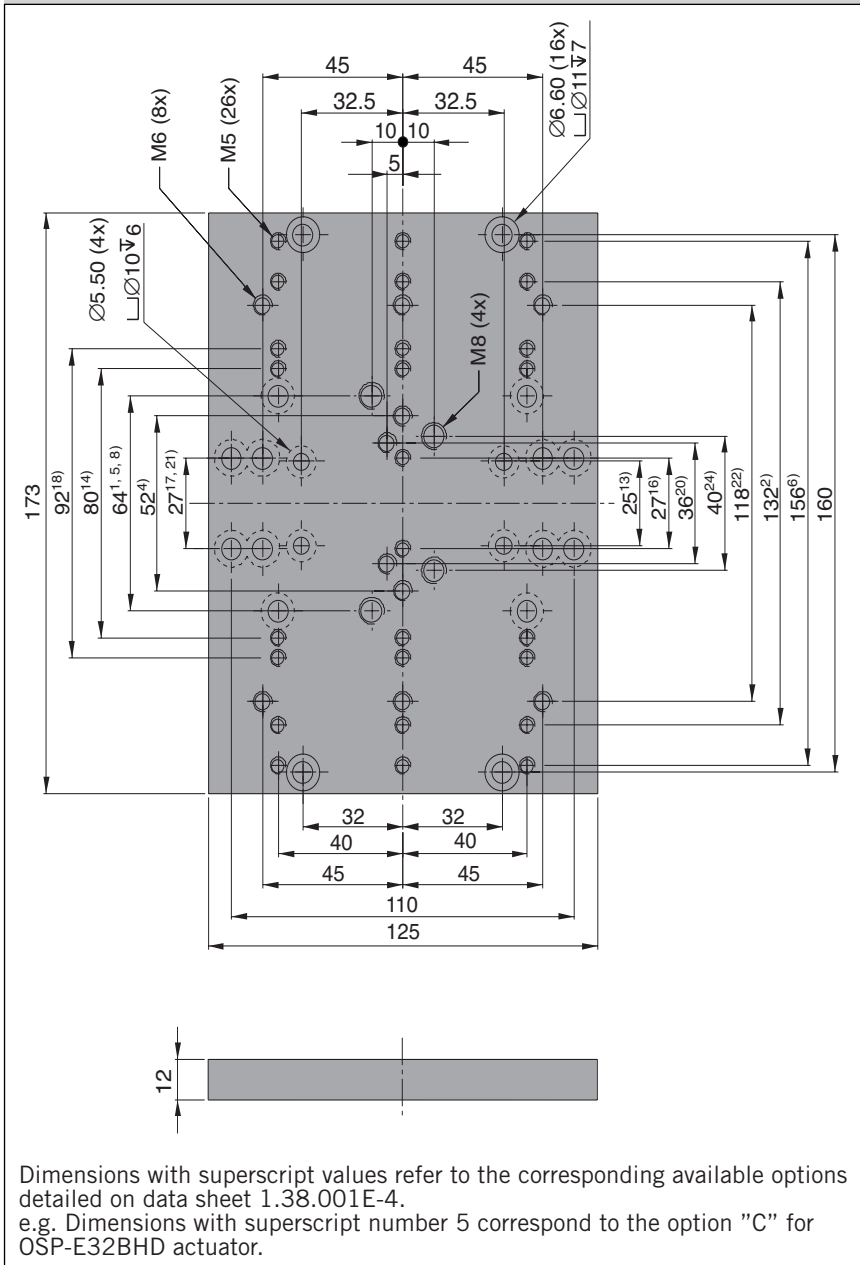
e.g. Dimensions corresponding to combination option „C“ for adapter plate MA1-50 connected to an OSP-E32BHD carrier are shown with Superscript number 5 on the MA1-50 adapter plate data sheet 1.38.002E-3

Other combinations on request.

A3P154E001Z50X

The right to introduce technical modifications is reserved

Dimensions [mm] Adapter Plate Type MA1-25



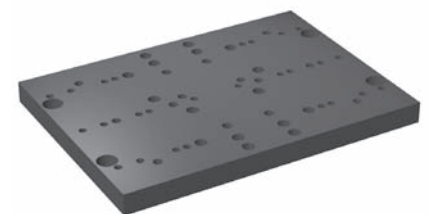
# Adapter Plate for OSP-E25



Type: MA1-25

The right to introduce technical modifications is reserved

Order Instructions and Weight		
Description	Weight(mass) [kg]	Order -No.
Adapter Plate Type MA1-25	0.7	12269
For <b>Linear Drives</b> see 1.15.002E, 1.20.002E, 1.20.016E, 1.30.002E, 1.35.002E, 1.35.011E, 1.35.021E		

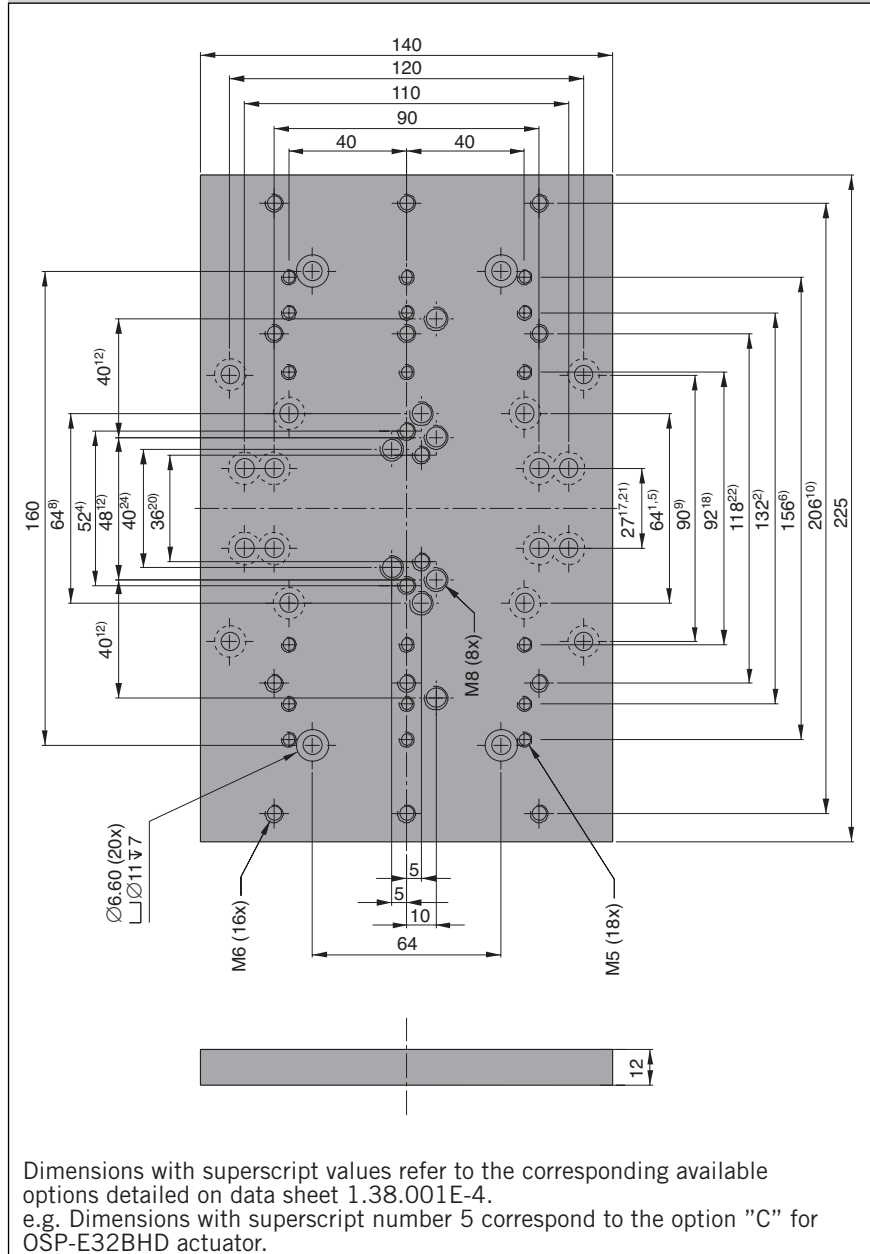


# Adapter Plate for OSP-E32



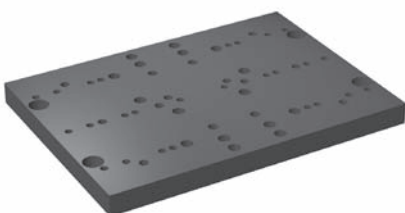
Type: MA1-32

## Dimensions [mm] Adapter Plate Type MA1-32



### Order Instructions and Weight

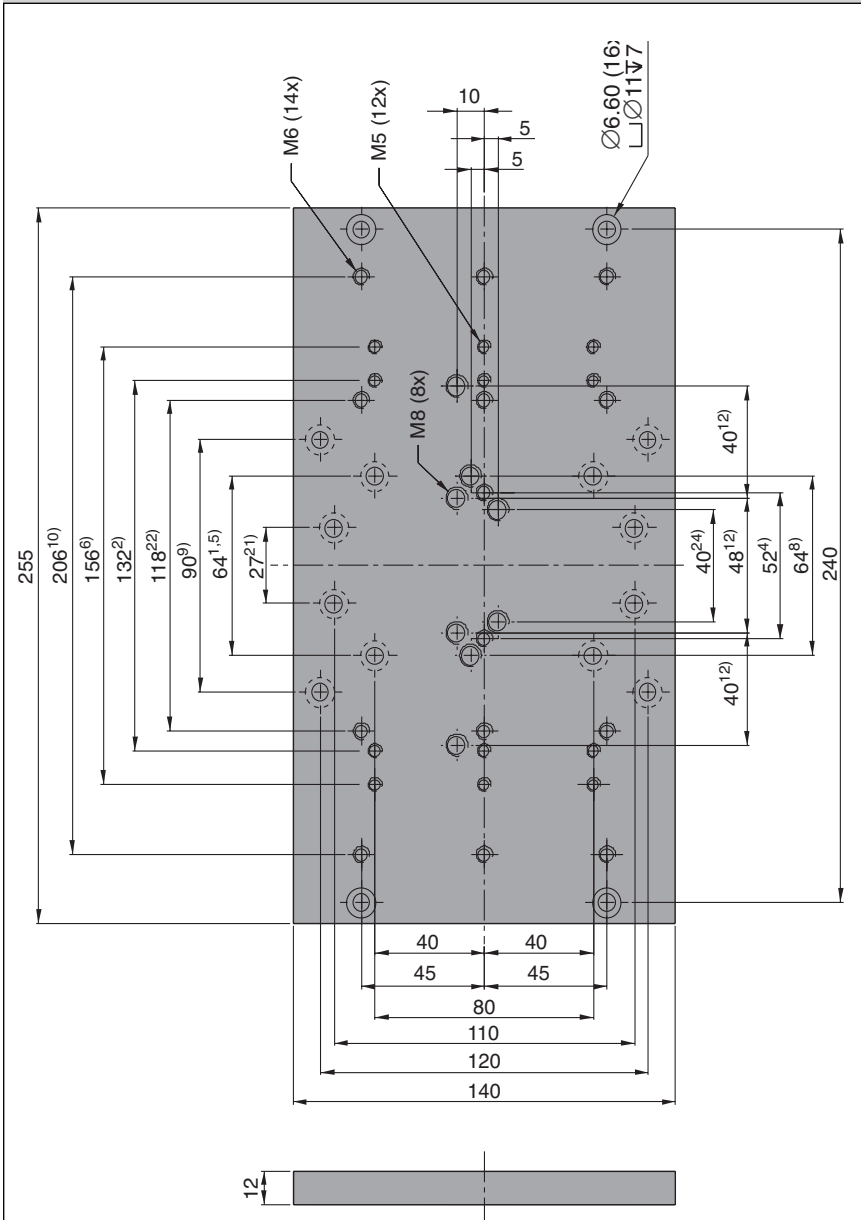
Description	Weight (mass) [kg]	Order No.
Adapter Plate Type MA1-32	1.0	<b>12272</b>



For **Linear Drives** see 1.15.002E, 1.20.002E, 1.20.016E, 1.30.002E, 1.35.002E, 1.35.011E, 1.35.021E

Data Sheet No. 1.38.002E-2

Dimensions [mm Adapter Plate Type MA1-50]



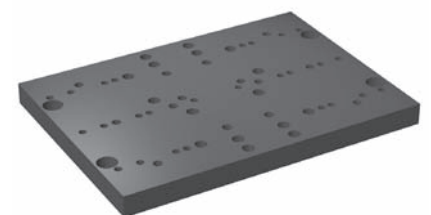
Dimensions with superscript values refer to the corresponding available options detailed on data sheet 1.38.001E-4. e.g. Dimensions with superscript number 5 correspond to the option "C" for OSP-E32BHD actuator.

# Adapter Plate for OSP-E50



Type: MA1-50

Order Instructions and Weight		
Description	Weight (mass) [kg]	Order No.
Adapter Plate Type MA1-50	1.1	<b>12275</b>
For <b>Linear Drives</b> see 1.15.002E, 1.20.002E, 1.20.016E, 1.30.002E, 1.35.002E, 1.35.011E, 1.35.021E		

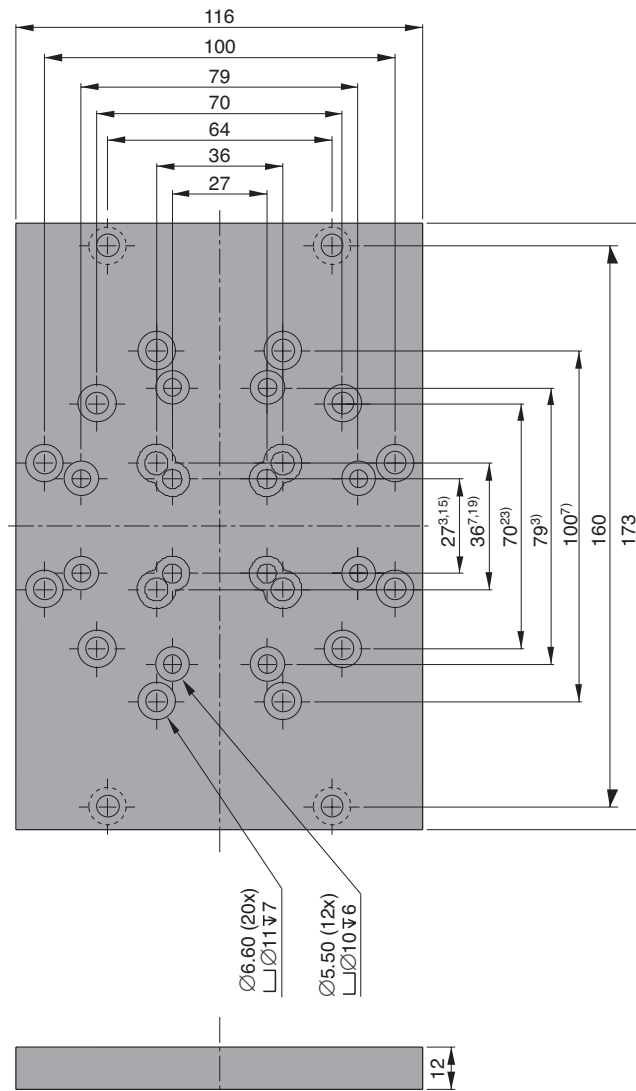


# Adapter Plate for OSP-E25



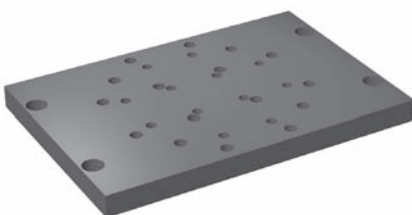
Type: MA2-25

## Dimensions [mm] Adapter Plate Type MA2-25



Dimensions with superscript values refer to the corresponding available options detailed on data sheet 1.38.001E-4.  
e.g. Dimensions with superscript number 5 correspond to the option "C" for OSP-E32BHD actuator.

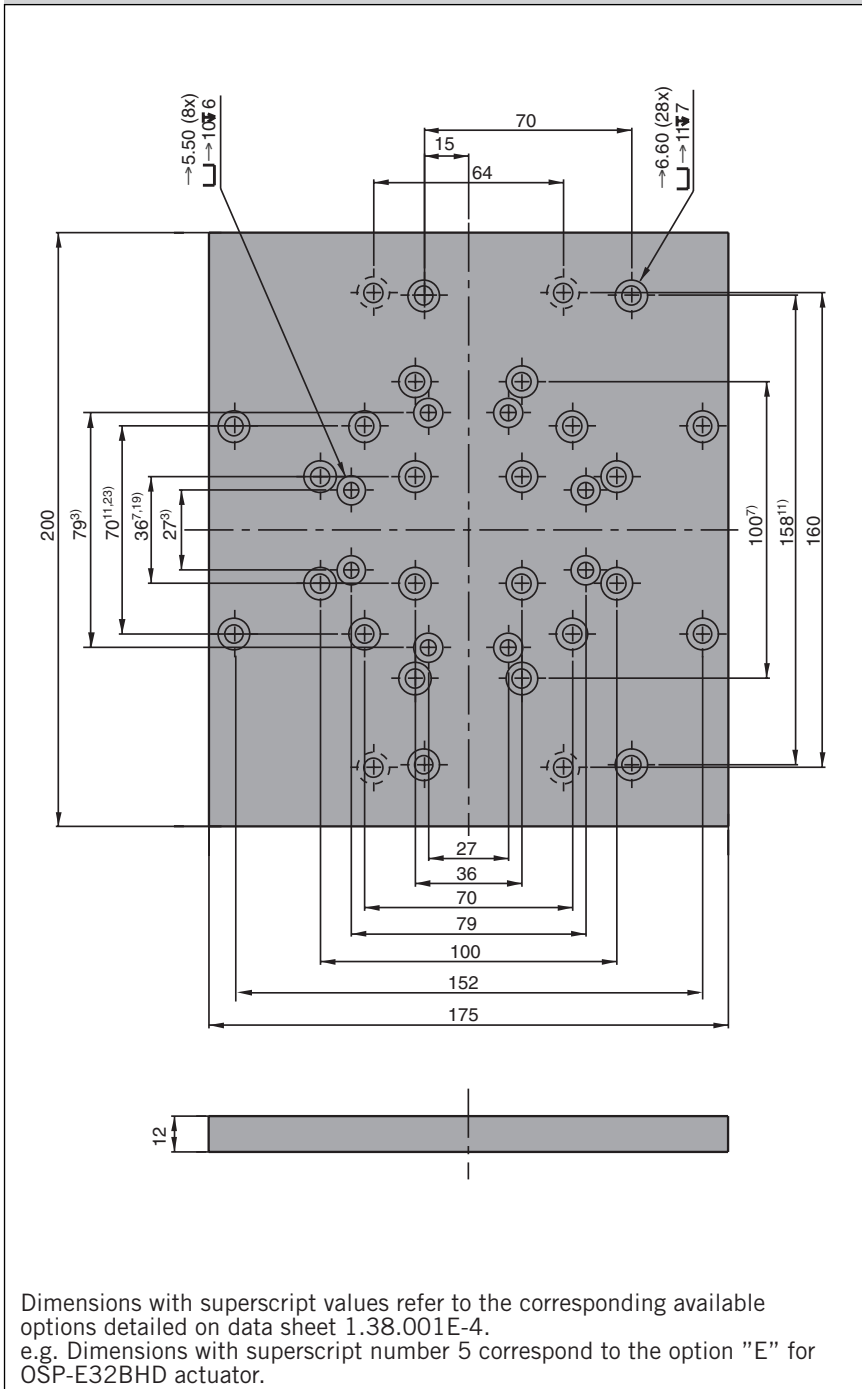
Order Instructions and Weight		
Description	Weight (mass) [kg]	Order No.
Adapter Plate Type MA2-25	0.6	12270



For **Linear Drives** see 1.15.002E, 1.20.002E, 1.20.016E, 1.30.002E, 1.35.002E, 1.35.011E, 1.35.021E



Dimensions [mm] Adapter Plate Type MA2-32

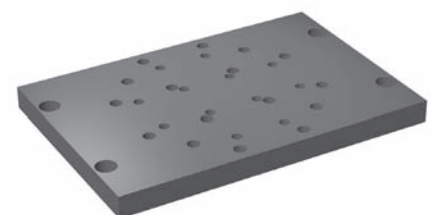


# Adapter Plate for OSP-E32



Type: MA2-32

Order Instructions and Weight		
Description	Weight (mass) [kg]	Order No.
Adapter Plate Type MA2-32	1.1	<b>12273</b>
For <b>Linear Drives</b> see 1.15.002E, 1.20.002E, 1.20.016E, 1.30.002E, 1.35.002E, 1.35.011E, 1.35.021E		

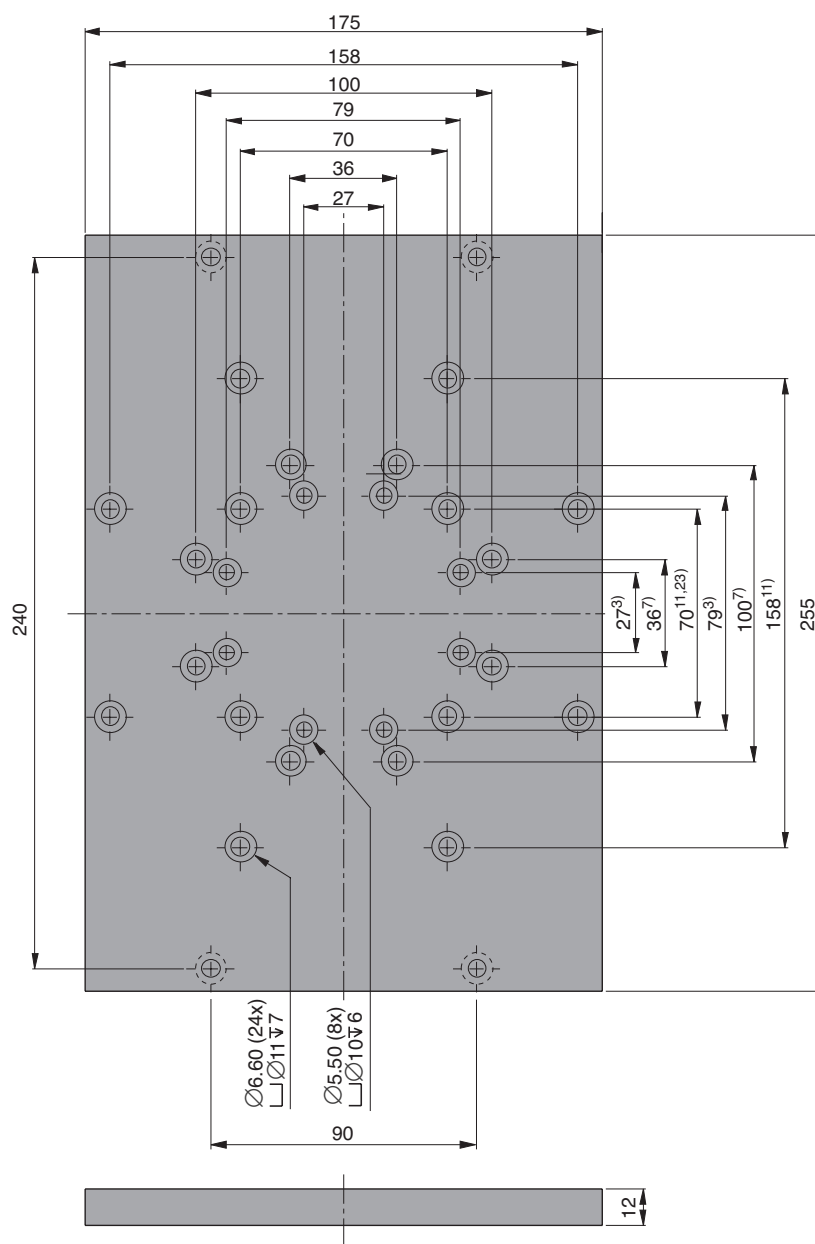


# Adapter Plate for OSP-E50



Type: MA2-50

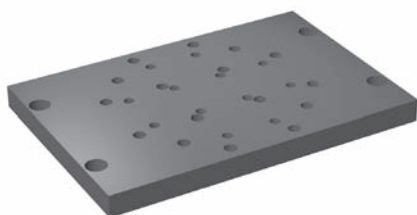
## Dimensions [mm] Adapter Plate Type MA2-50



Dimensions with superscript values refer to the corresponding available options detailed on data sheet 1.38.001E-4.  
e.g. Dimensions with superscript number 5 correspond to the option "E" for OSP-E32BHD actuator.

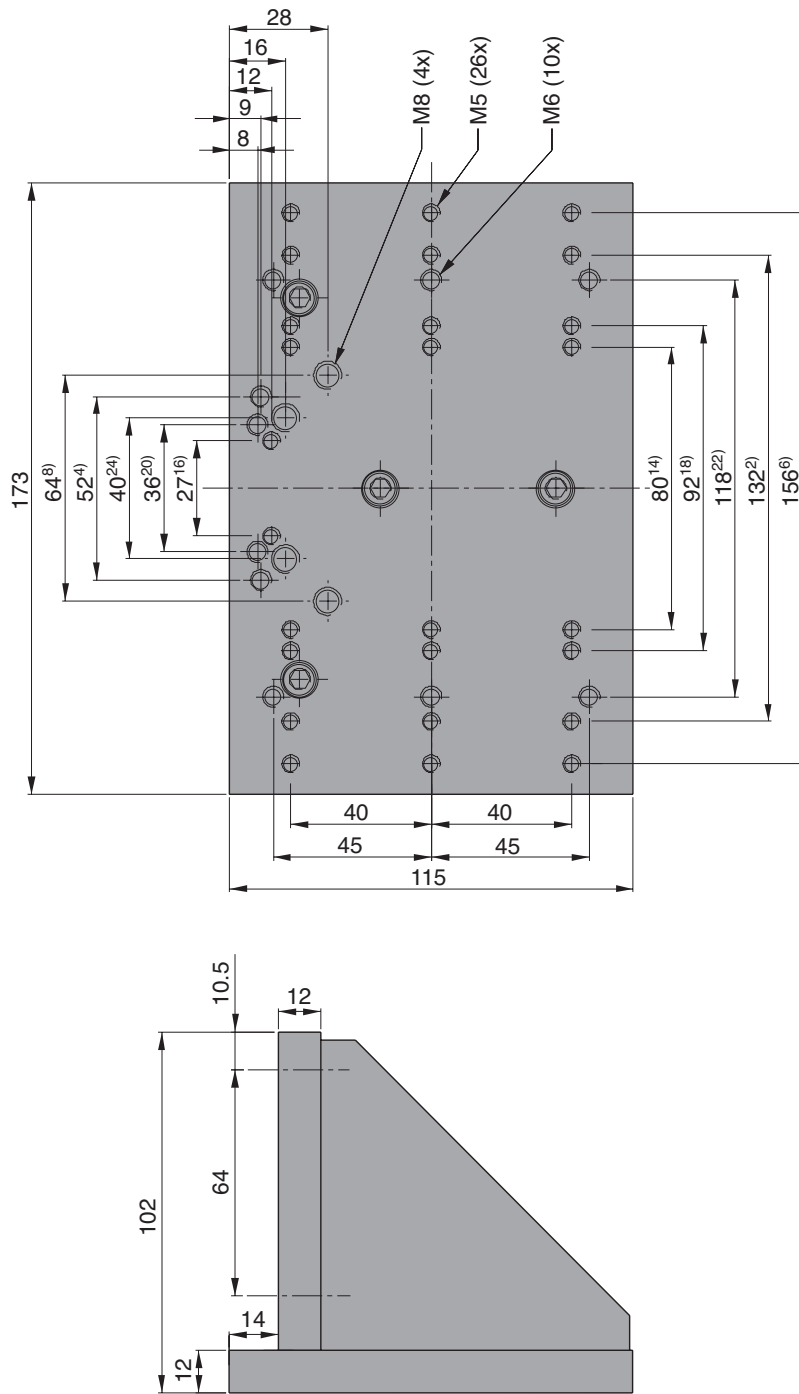
### Order Instructions and Weight

Description	Weight (mass) [kg]	Order No.
Adapter Plate Type MA2-50	1.4	<b>12276</b>



For **Linear Drives** see 1.15.002E, 1.20.002E, 1.20.016E, 1.30.002E, 1.35.002E, 1.35.011E, 1.35.021E

Dimensions [mm] Adapter Plate Type MA3-25



Dimensions with superscript values refer to the corresponding available options detailed on data sheet 1.38.001E-4. e.g. Dimensions with superscript number 5 correspond to the option "EM" for OSP-E32BHD actuator.

# Adapter Plate for OSP-E25

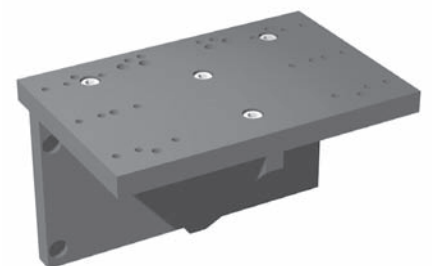


Type: MA3-25

### Order Instructions and Weight

Description	Weight(mass) [kg]	Order No.
Adapter Plate Type MA3-25	1.3	<b>12271</b>

For **Linear Drives** see 1.15.002E, 1.20.002E, 1.20.016E, 1.30.002E, 1.35.002E, 1.35.011E, 1.35.021E

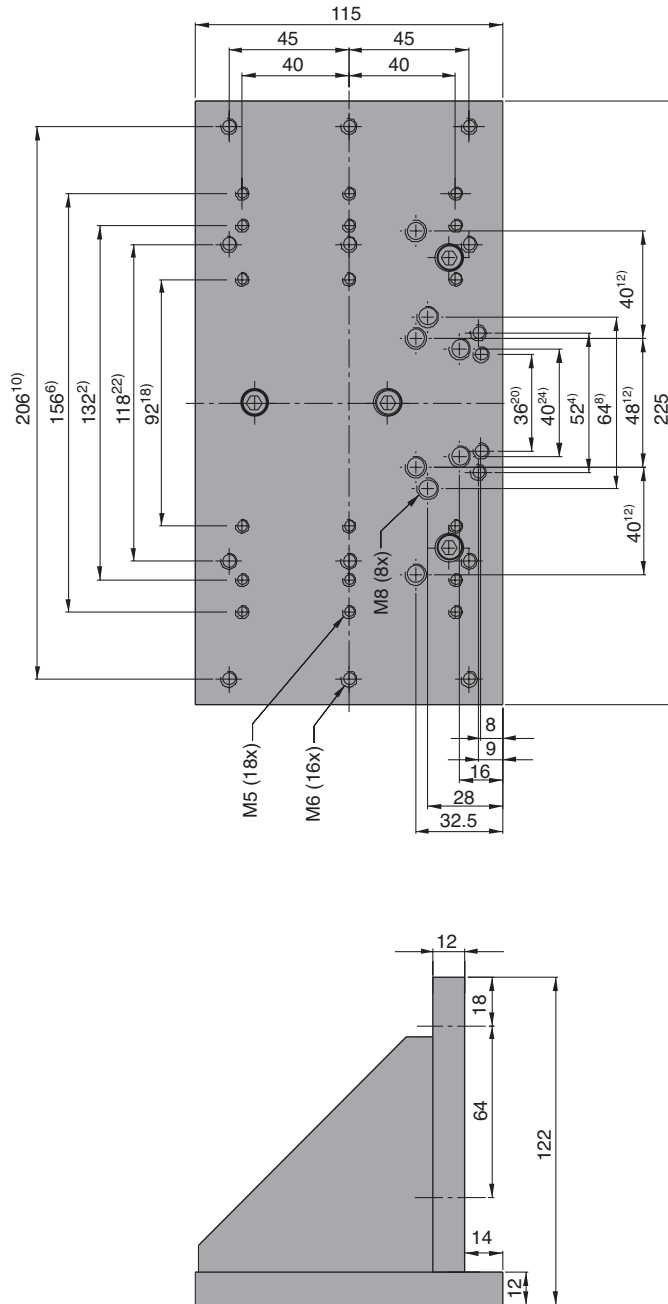


# Adapter Plate for OSP-E32

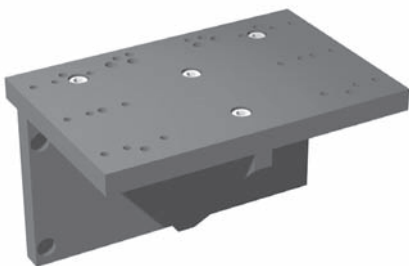


Type: MA3-32

## Dimensions [mm Adapter Plate Type MA3-32



Dimensions with superscript values refer to the corresponding available options detailed on data sheet 1.38.001E-4.  
e.g. Dimensions with superscript number 5 correspond to the option "EM" for OSP-E32BHD actuator.



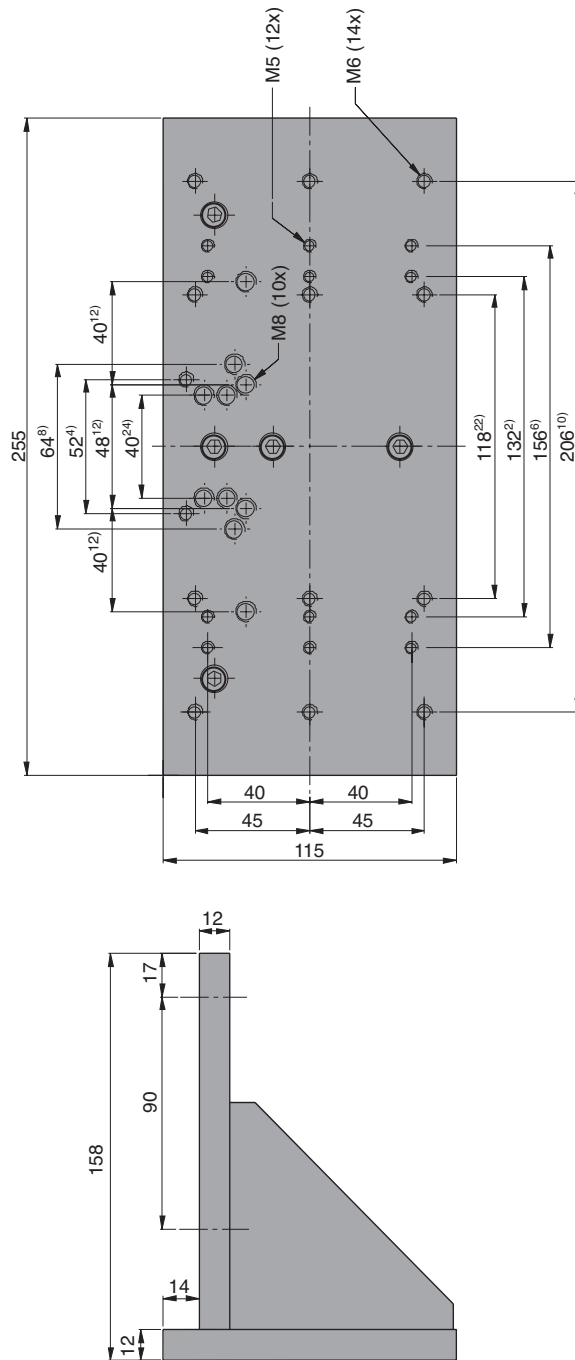
### Order Instructions and Weight

Description	Weight (mass) [kg]	Order No.
Adapter Plate Type MA3-32	1.8	<b>12274</b>

For **Linear Drives** see 1.15.002E, 1.20.002E, 1.20.016E, 1.30.002E, 1.35.002E, 1.35.011E, 1.35.021E

Data Sheet No.1.38.002E-8

Dimensions [mm] Adapter Plate Type MA3-50

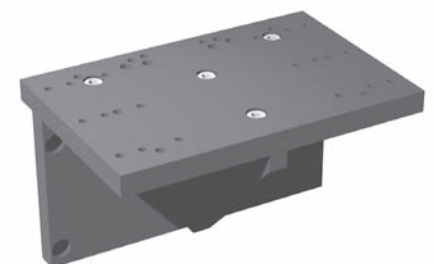


Dimensions with superscript values refer to the corresponding available options detailed on data sheet 1.38.001E-4. e.g. Dimensions with superscript number 4 correspond to the option "EM" for OSP-E25BHD actuator.

# Adapter Plate for OSP-E50



Type: MA3-50



### Order Instructions and Weight

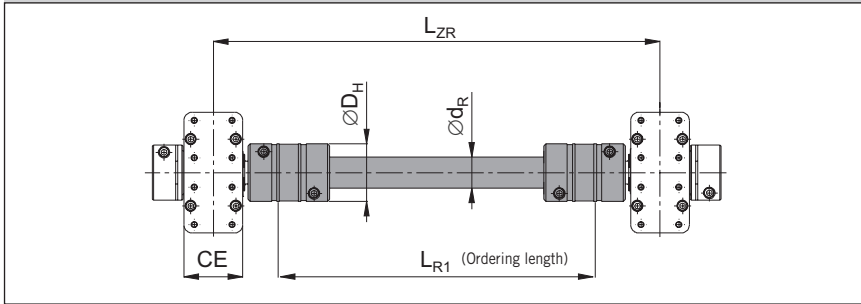
Description	Weight (mass) [kg]	Order No.
Adapter Plate Type MA3-50	2.3	<b>12277</b>

For **Linear Drives** see 1.15.002E, 1.20.002E, 1.20.016E, 1.30.002E, 1.35.002E, 1.35.011E, 1.35.021E

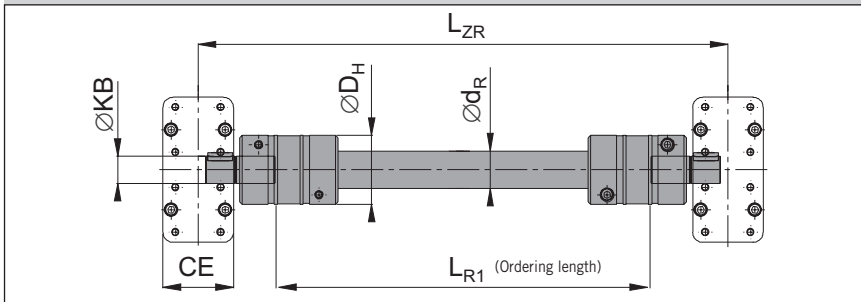
Data Sheet No. 1.38.002E-9



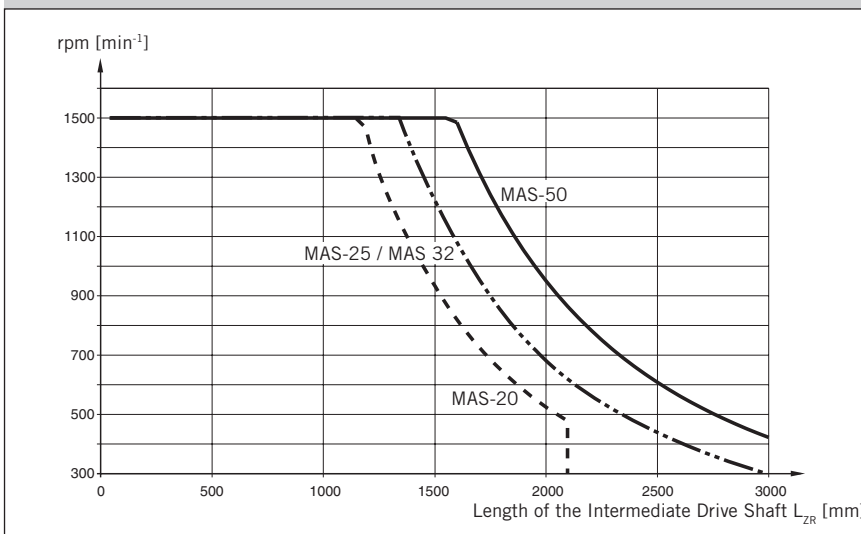
**Intermediate Drive Shaft with Clamp Shaft**  
Series OSP-E20BHD to E50BHD, Type MAS-..



**Intermediate Drive Shaft with Plain Shaft and Keyway**  
Series OSP-E20BHD to E50BHD, Type MAS-..



**Critical Speed v. for Coupling Length**



# Multi-Axis-System Accessories

## Complete Intermediate Drive Shaft

Size 25, 32, 50



for Linear drive  
• Series OSP-E..BHD

**Note:**  
For Series OSP-E..BHD with integrated gearbox, please contact your local Parker Origa technical support.

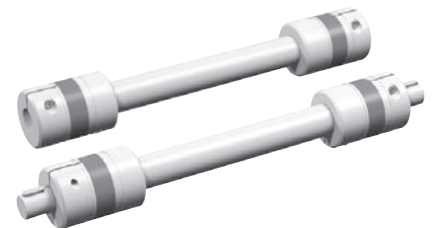
For other series on request.

**Features:**

- Backlash-free shaft connection under pre-stress
- Design up to speed 1500 rpm
- Intermediate Drive Shaft with double coupling for larger displacements of parallel linear drives
- Easy to mount

**Material:**

Aluminium (AL-H) / Steel (St-H)  
Polyurethane/Hytre



The right to introduce technical modifications is reserved

**Characteristics / Dimension Table [mm] and Order No.**

Series	Type	Max. Torque- [Nm] **	CE	D <sub>H</sub>	KB***	L <sub>ZR</sub>	L <sub>R1</sub>	d <sub>R</sub>	Order No. *	
									For Clamp Shaft	For Hollow Shaft
OSP-E20BHD	MAS-20	28	38	40	12 <sub>k6</sub>	< 2100	L <sub>ZR</sub> -98	20x3.0	16256- ...	16257- ...
OSP-E25BHD	MAS-25	39	42	55	16 <sub>k6</sub>	< 3000	L <sub>ZR</sub> -112	25x2.5	12305- ...	12281- ...
OSP-E32BHD	MAS-32	42	56	55	22 <sub>k6</sub>	< 3000	L <sub>ZR</sub> -126	25x2.5	12306- ...	12282- ...
OSP-E50BHD	MAS-50	102	87	65	32 <sub>k6</sub>	< 3000	L <sub>ZR</sub> -167	35x4.0	12307- ...	12283- ...

\* Complete with L<sub>R1</sub>. Length in mm.  
Example: 12305- 1200  
(Length L<sub>R1</sub> = 1200 mm)

\*\* For higher torque requirement, please contact your local Parker Origa technical support

\*\*\* Other dimensions for KB on request.

For Linear Drives see 1.15.002E

Data Sheet No. 1.38.004E